

Pack Up Your Sins and Go to the Devil

SAM H. HARRIS *presents*

IRVING BERLIN'S

*Second Annual*

# MUSIC BOX REVUE

1922-23

WORDS and MUSIC BY  
IRVING BERLIN

LADY OF THE EVENING	.60
PACK UP YOUR SINS AND GO TO THE DEVIL	.60
CRINOLINE DAYS	.60
PORCELAIN MAID	.60
WILL SHE COME FROM THE EAST? (EAST-NORTH-WEST OR SOUTH)	.60
MONT MARTRE	.60
THE LITTLE RED LACQUER CAGE	.60
BRING ON THE PEPPER	.60
DIAMOND HORSESHOE	.60
THREE CHEERS FOR THE RED, WHITE AND BLUE	.60
I'M LOOKING FOR A DADDY LONG LEGS	.60
TAKE A LITTLE WIFE	.60
SELECTION	1.00

Staged by HASSARD SHORT

Irving Berlin Inc.  
MUSIC PUBLISHERS  
1607 Broadway New York

PRINTED IN U.S.A.

# Pack Up Your Sins And Go To The Devil

By IRVING BERLIN

Moderato

The piano introduction consists of two systems of music. The first system is in 4/4 time, marked 'Moderato' and 'f' (forte). It features a rhythmic pattern of eighth and sixteenth notes in both the treble and bass staves. The second system continues this pattern, with some chords in the treble staff becoming more complex, including some with sharps and naturals.

This system contains the first part of the vocal line and piano accompaniment. The vocal line begins with a whole rest, followed by the lyrics 'Oh, I got a mes-sage from be -'. The piano accompaniment is marked 'mf' (mezzo-forte) and features a steady eighth-note bass line and a treble line with chords and melodic fragments.

This system contains the second part of the vocal line and piano accompaniment. The vocal line continues with the lyrics 'low 'Twas from a man I used to know A-bout a year or so a -'. The piano accompaniment continues with the same rhythmic and harmonic structure as the previous system.

go, be-fore\_ he de - part-ed He \_\_\_\_\_ is just as hap-py as can

be, I'll tell you what he said to me,

He said, "If ev - er you get heav - y heart - ed"

*marcato*

CHORUS

Pack up your sins and go to the dev-il in had - es \_\_\_\_\_ You'll meet the

*p-f*

fin-est of gen-tle-men and the fin-est of la - dies, They'd rath-er

be down be - low than up a - bove, Had-es is full of thous - ands of

Jones-es and Browns, O'-Hoo - li-hans, Co-hens and Bra - dys, You'll hear a

heav-en - ly tune that went to the dev-il Be - cause the jazz bands

They start-ed pick-in' it, then put a trick in it, a jazz-y kick in it,

They've got a cou - ple of old re - form - ers in heav - en,

Mak - ing them go to bed at e - lev - en, Pack up your sins and go

to the dev - il, And you'll nev - er have to go to bed at all. all. —

*f* *Fine*

## PATTER

If you care to dwell, where the weath-er is hot, H - E - doub-le - L is a

*p leggiero*

won-der-ful spot If you need a rest and you're all out of sorts

Had-es is the best of the win-ter re-sorts, Par-a-dise does-n't com-pare All the nice

peo-ple are there They come there from ev-'ry-where Just to re-vel with Mis-ter Dev-il

Nothing on his mind but a cou-ple of horns, Sa-tan is wait-in' with his jazz band

The first system consists of a vocal line on a treble clef staff and a piano accompaniment on grand staff (treble and bass clefs). The key signature has one flat (B-flat). The vocal line begins with a quarter note G4, followed by eighth notes A4, B4, C5, and a quarter rest. The piano accompaniment features a rhythmic pattern of eighth notes in the right hand and chords in the left hand.

And his band Came from Al-a-bam', with a mel-o-dy hot

The second system continues the piece. The vocal line has a quarter rest followed by a half note G4, then eighth notes A4, B4, C5, and a quarter rest. The piano accompaniment includes dynamic markings such as *p* (piano) and *fz* (forzando).

No one gives a damn if it's mus-ic or, not Sa-tan's mel-o - dy makes you

The third system shows the vocal line with a quarter note G4, eighth notes A4, B4, C5, and a quarter rest. The piano accompaniment continues with chords and melodic lines.

want to dance for ev - er, And you nev - er have to go to bed at all.

The fourth system concludes the piece. The vocal line has a quarter note G4, eighth notes A4, B4, C5, and a quarter rest. The piano accompaniment ends with a double bar line and a repeat sign. The instruction *D.S. al Fine* is written at the bottom right.



# SONG GEMS

FROM

## IRVING BERLIN'S

SECOND ANNUAL

# MUSIC BOX REVUE

### CHORUS Lady Of The Evening

*Slowly with expression*

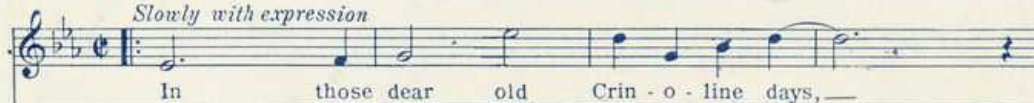


### CHORUS Pack Up Your Sins And Go To The Devil



### CHORUS Crinoline Days

*Slowly with expression*



### CHORUS Will She Come From The East?

*Slow March Tempo*



### CHORUS Porcelain Maid



### CHORUS Bring On The Pepper

*Slower*



### CHORUS The Little Red Lacquer Cage

*rall Slowly with tenderness*



### CHORUS Mont Martre

*a little faster*



Copyright MCMXXII by IRVING BERLIN Inc., 1607 Broadway, New York  
International Copyright Secured All Rights Reserved

COPIES ON SALE WHEREVER MUSIC IS SOLD

Lilly  
M  
1048  
box 12  
no 1  
copy 2