

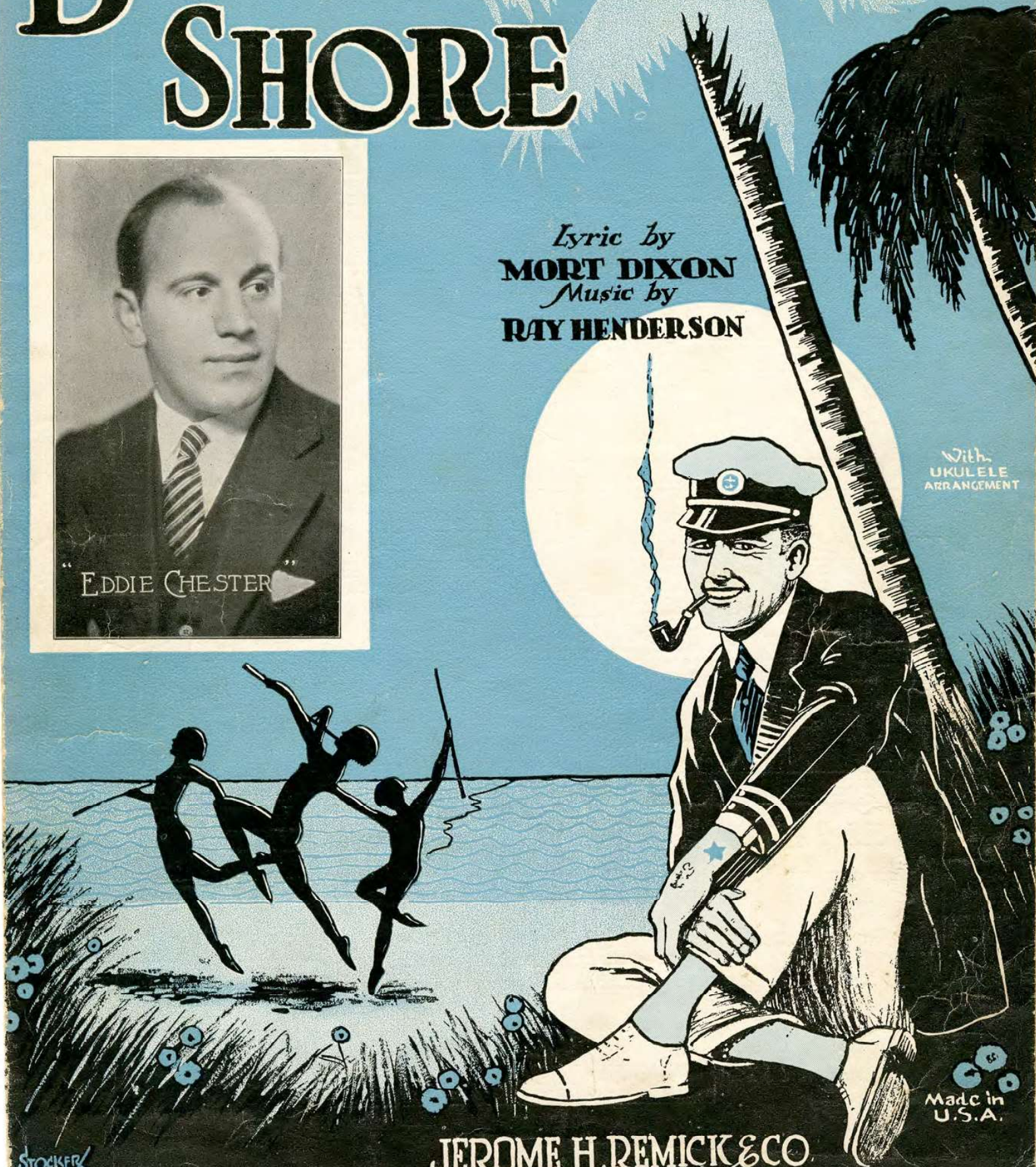
OPERATIC EDITION

BAMBAMBAMY SHORE



Lyric by
MORT DIXON
Music by
RAY HENDERSON

With
 UKULELE
 ARRANGEMENT



Made in
 U.S.A.

STOCKER

JEROME H. REMICK & CO.
 New York Detroit

BAM BAM BAMY SHORE SONG

Ukulele in D

Tune Uke thus: $B\flat E\flat G C$ when played with Piano.

(Tenor Banjo, Mandola, Guitar, etc
play chords marked over diagrams.)

Music by
RAY HENDERSON

Lyric by
MORT DIXON

Moderato

PIANO

First system of piano introduction, featuring a treble and bass clef with chords and a dynamic marking of *f*.

Second system of piano introduction, continuing the chordal accompaniment.

VOICE

(E \flat 7) (F \sharp -7)(A \flat m)(E \flat) (B \flat 7+5) (A7)

Four chord diagrams corresponding to the chords listed above: (E \flat 7), (F \sharp -7)(A \flat m)(E \flat), (B \flat 7+5), and (A7).

Vocal line with lyrics: "I could tell you a tale / I could play you a tune". Below the vocal line is the piano accompaniment for this section, including dynamic markings *mf* and *p*.

(B7) (E \flat) (E \flat 7) (Cm) (B \flat 7) (E \flat) (C \sharp -7) (B \flat 7)

Seven chord diagrams corresponding to the chords listed above: (B7), (E \flat), (E \flat 7), (Cm), (B \flat 7), (E \flat), (C \sharp -7), and (B \flat 7).

Vocal line with lyrics: "Of ships that sunk and trains that left the rail / That Span-iards play right un-der-neath the moon". Below the vocal line is the piano accompaniment for this section, including dynamic markings *mf* and *l h*.

Copyright MCMXXV by JEROME H REMICK & CO., New York & Detroit
Propiedad para la Republica Mexicana de Jerome H. Remick & Co., New York & Detroit. Depositada conforme a la ley

MADE IN U S A

ALL RIGHTS RESERVED
INCLUDING PUBLIC PERFORMANCE FOR PROFIT

International Copyright Secured

(Eb) (F#-7) (Abm) (Eb) (Bb7+5) (Ab7) (Bb7) 3

I could sing you a song Of
I could dance you a dance That

(Eb) (Eb7) (Cm) (Bb7) (Eb) (Ab7) (Eb) (Fm7)(Ab7)

lips I kiss'd where nights are dark and long
fun - ny fel - lers do way out in France

l.h.

(G7) (Eb+5) (C7)

I've been in ev - 'ry ter - ri - to - ry
I saw the hu - las in Ha - wai - i

(F7) (F7+5) (Bb) (Bb7+5)

Lis - ten my chil - dren to my sto - ry
I set Ve - su - vi - us on fire

CHORUS

(Eb) (Bb) (Eb) (Bb7) (Eb)(Cm)(Eb7)

Oh a thousand miles I travel'd and a thousand sights I saw — But there
 Oh a thousand miles I travel'd and a thousand shows I saw — But there

(Fm)(Ab) (Eb)(Bbm)(C7) (F7) (Bb7) (Eb)

ain't no sight like a moon-light night On the Bam Bam Bam-y shore — Oh a
 ain't no bill like the vau - de - vill On the Bam Bam Bam-y shore — Oh a

(Bb7) (Eb) (Bb7) (Eb)(Cm)(Bb7)

thou-sand gals I met with that I nev - er met be - fore — But the
 thou-sand jokes I laughed at but the ones that make me roar — Are the

(Fm)(Ab) (Eb)(Bbm)(C7) (F7) (Bb7) (Eb) (Ab)

gal I'll get is the gal I met On the Bam Bam Bam-y shore I've been in
 jokes they crack from the Al - ma - nac On the Bam Bam Bam-y shore No sax - o -

(A^bm) (E^b) (Gm) (E^b7) (A^b)

big towns jaz-zin' a-round I've been in small
- phon ers play half as mean As Un-cle Jo

(A^bm) (E^b) (B^b7) (E^b) (B^b7)

towns knock-in' 'em down Oh a thousand miles I
- nah's old a-cor-deen Oh a thousand cars I

(E^b) (B^b7) (E^b) (Cm) (E^b7) (Fm) (A^b)

trav-el'd and I ain't so young no more But I won't sit pat till I
rode in but I won't ride in no more After I ar-riv in the

(E^b) (B^bm) (C7) (F7) (B^b7) 1. (E^b) (C[#]-7) (B^b7) (E^b) 2. (E^b) (B^b7+5) (E^b)

hang my hat On the Bam Bam Bam-y Shore Oh a Shore
old tin fliv On the Bam Bam Bam-y Shore Oh a Shore

OH LOVEY BE MINE

SONG

By WALTER DONALDSON

CHORUS

Oh Lov-ey with a gal like you Oh Lov-ey what a man can do Oh Lov-ey oh Lov-ey be
 Oh Lov-ey with a gal like you Oh Lov-ey what a man can do Oh Lov-ey oh Lov-ey be

mine ————— Don't sleep nights 'cause you make me guess Don't eat right 'cause you won't say yes I'm fret-tin' up-
 mine ————— I want you when the sun goes down I need you when the moon comes 'round Oh Lov-ey oh

-set-tin' my mind ————— (I'm shout-in') Of all the sweet-hearts I could have had —
 Lov-ey be mine ————— (I'm shout-in') Of all the sweet-hearts I could have had —

I nev-er want-ed some-one so bad ————— Oh Lov-ey you can make me blue But take me make me
 I nev-er want-ed some-one so bad ————— Oh Lov-ey if you two-time me Oh Lov-ey what a

Copyright MCMXXV by JEROME H. REMICK & CO., New York & Detroit
 Propiedad para la Republica Mexicana de Jerome H. Remick & Co., New York & Detroit. Depositada conforme a la ley

17-2

MADE IN U. S. A.

ALL RIGHTS RESERVED
 INCLUDING PUBLIC PERFORMANCE FOR PROFIT

International Copyright Secured

