

WILL SHE COME FROM THE EAST?
 (EAST-NORTH-WEST OR SOUTH)

SAM H. HARRIS *presents*
IRVING BERLIN'S

Second Annual
MUSIC BOX REVUE
 1922-23

WORDS and MUSIC BY
IRVING BERLIN

LADY OF THE EVENING	.60
PACK UP YOUR SINS AND GO TO THE DEVIL	.60
CRINOLINE DAYS	.60
PORCELAIN MAID	.60
WILL SHE COME FROM THE EAST? (EAST-NORTH-WEST OR SOUTH)	.60
MONT MARTRE	.60
THE LITTLE RED LACQUER CAGE	.60
BRING ON THE PEPPER	.60
DIAMOND HORSESHOE	.60
THREE CHEERS FOR THE RED, WHITE AND BLUE	.60
I'M LOOKING FOR A DADDY LONG LEGS	.60
TAKE A LITTLE WIFE	.60
SELECTION	1.00

Bagaduce Music
 Lending Library

Brooksville, Maine

Donor: 4.0 Coll: .60

Staged by HASSARD SHORT

Vp. 006376
 1922
 Will

Irving Berlin Inc.
 MUSIC PUBLISHERS
 1607 Broadway New York



PRINTED IN U.S.A.

ONE OF THE OUTSTANDING SONG HITS
FROM

IRVING BERLIN'S
SECOND ANNUAL
MUSIC BOX REVUE

CRINOLINE DAYS

CHORUS

By IRVING BERLIN

Slowly with expression

In those dear old Crin-o-line days,—

Old fash-ioned peo - ple with their old fash-ioned ways.—

When the girl a fel-low court - - ed

Copyright MCMXXII by IRVING BERLIN Inc. 1607 Broadway, New York
International Copyright Secured All Rights Reserved

Copies On Sale Wherever Music Is Sold
This Number can also be had for your Phonograph or Player Piano

Will She Come From The East?

(East-North-West or South)

By IRVING BERLIN

poco cresc.

The piano introduction consists of two staves. The right hand features a melodic line with eighth and sixteenth notes, while the left hand provides a harmonic accompaniment with chords and moving bass lines. The tempo and dynamics are marked as *poco cresc.*

VOICE

Four lit - tle cross - roads lie be - fore me

The first system of the vocal melody and piano accompaniment. The vocal line begins with a rest followed by the lyrics "Four lit - tle cross - roads lie be - fore me". The piano accompaniment features a sustained chord in the right hand and a moving bass line in the left hand.

One of the four I must choose Wheth - er the way be

The second system of the vocal melody and piano accompaniment. The vocal line continues with the lyrics "One of the four I must choose Wheth - er the way be". The piano accompaniment continues with a similar harmonic structure.

fair or storm - y wheth - er I win or I lose

rall.

The third system of the vocal melody and piano accompaniment. The vocal line concludes with the lyrics "fair or storm - y wheth - er I win or I lose". The piano accompaniment ends with a *rall.* (rallentando) marking.

Arranged by
Chas N. Grant

Copyright MCMXXII by IRVING BERLIN Inc., 1607 B way, N.Y.
International Copyright Secured

All Rights Reserved

Which of the four shall I make my way I wish I knew where to start

which lit-tle road shall be the high-way lead-ing to my heart.

rall.

CHORUS *Slow March Tempo*

Will she come from the East where the

mf-f *risoluto*

Broad-way peach-es grow Will she come from the

North from the land of ice and snow or will she

come from the heart of the West There where the

sun goes to rest Will she come trot-tin' from the land of cot-ton From a-

poco cresc.

way down South Will she South

1. 2.

f



SONG GEMS

FROM

IRVING BERLIN'S

SECOND ANNUAL

MUSIC BOX REVUE

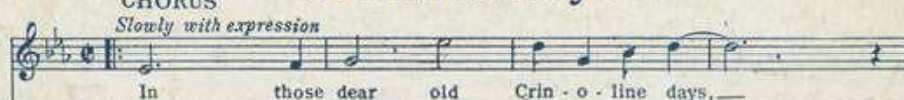
CHORUS Lady Of The Evening



CHORUS Pack Up Your Sins And Go To The Devil



CHORUS Crinoline Days



CHORUS Will She Come From The East?



CHORUS Porcelain Maid



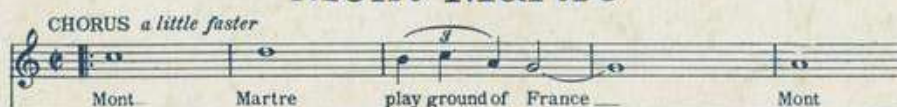
CHORUS Bring On The Pepper



CHORUS The Little Red Lacquer Cage



CHORUS Mont Martre



Copyright MCMXXII by IRVING BERLIN Inc., 1607 Broadway, New York
International Copyright Secured All Rights Reserved

COPIES ON SALE WHEREVER MUSIC IS SOLD