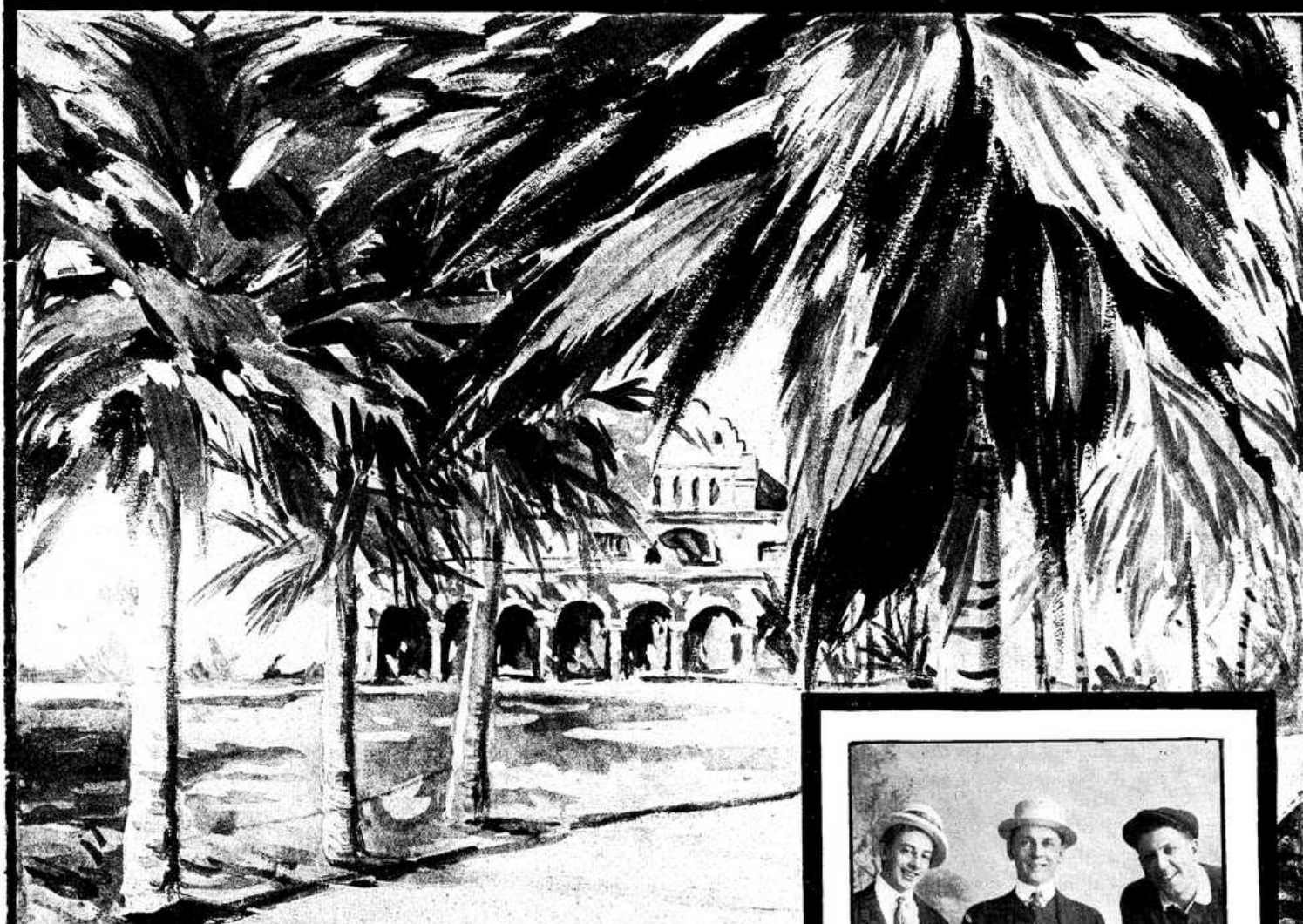
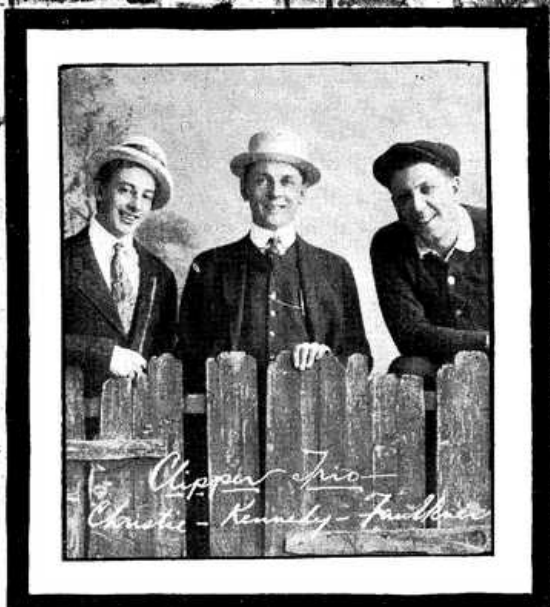


# DOWN AMONG THE SHELTERING PALMS



*Words by*  
JAMES BROCKMAN

*Music by*  
ABE OLMAN



*Clipping Trio  
Christie - Kennedy - Franklin*

LA SALLE MUSIC PUB. CO.  
RANDOLPH BLDG. CHICAGO

≧ TRY THIS ON YOUR PIANO ≦

2

Dedicated by permission to Miss Grace Cunard.

# Lucille Love Waltzes

INTRO.  
Moderato.

By ABE OLMAN.

1

Tempo di Valse.

Copyright, 1914 by La Salle Music Pub. Co.  
Randolph Bldg. Chicago, Ill.

≧ FOR SALE BY ALL MUSIC DEALERS ≦

# Down Among The Sheltering Palms

3

Words by  
JAMES BROCKMAN.

Music by  
ABE OLMAN.

Writer of "If They Were All Like You"

**Moderato**

*f*

*p*

VAMP

I'm way down east, down east, And my  
When I was south, down south, There I

heart is pin - ing, pin - ing for you, You're way out west, out west, And my  
saw some pret - ty, pret - ty pla - ces, When I was north, way north, I saw

soul is crav - ing, crav - ing for you, I love you so,  
man - y, man - y pret - ty fa - ces, not one so fair,

International Copyright Secured.

Copyright 1914 by La Salle Music Pub. Co.  
306 Randolph Bldg. Chicago, Ill.

PIANOS AND ORGANS,  
SHEET MUSIC  
GREENSBURG, IND.

Just you I know, — It takes six days to go there with a train, Just  
None could com - pare, — There's on - ly one place way out in the west, And

one week more and I'll be with you a - gain. — I long to be.  
you are there, where with you I long to rest — I long to be.

CHORUS. *p-f*

Down a - mong the shel - ter - ing palms, O hon - ey

wait for me, O hon - ey wait for me, Meet me down by the

old Gold-en Gate, Out where the sun goes down a-bout eight,

How my love is burn-ing, burn-ing, burn-ing, How my heart is

yearn-ing, yearn-ing, yearn-ing, To be down a-mong the shel-ter-ing palms, O hon-ey

wait for me. me.

# Be Sure and Get These Two Big Hits

## IF THEY WERE ALL LIKE YOU

Without a doubt, the  
prettiest Ballad in years

*Get a Copy-*  
*You'll like it*

\*Dedicated by permission to Miss Grace Conner.  
**Lucille Love Waltzes**

By ABE OLMAN

INTRO.  
Moderato.

Tempo di Valze.

Sostenuto.  
meno allargando.  
dim.

Copyright 1914 by La Salle Music Pub. Co.,  
Riverside Bldg. Chicago, Ill.

## If They Were All Like You

Words by WILLIAM DILLON

Music by ABE OLMAN

CHORUS Slow

If they were all like you— What a great world this would  
be— if they were all like you— There would be no mis-er-  
y in an y fan-ily— Each boy and girl— Would  
live and love so true— There'd be no break- en hearts from

Copyright 1914 by La Salle Music Pub. Co.  
Chicago.  
International copyright secured  
Star Music Company - London, Eng.

## LUCILLE LOVE WALTZES

As popular as the  
Moving Pictures

*Easy to Play*  
*and worth Playing*

LA SALLE MUSIC PUBLISHING CO., Abe Olman, Mgr.  
145 N. CLARK STREET, CHICAGO