

CANADA'S AIR SON

CLIMBIN' HIGH

TO THE
ROYAL CANADIAN AIR FORCE

35c



To the Royal Canadian Air Force

CLIMBIN' HIGH

Words and Music by
JIMMIE COULTER, P.R.S. (London)
T. REG SLOAN, C.P.R.S.

March Time

mf cresc.

xx Eb

The piano introduction is in 6/8 time, marked 'March Time'. It begins with a melody in the right hand and a bass line in the left hand. The melody starts on a half note G4, followed by quarter notes A4, Bb4, and C5. The bass line consists of a steady eighth-note pattern: G2, Bb2, D3, F3. The piece is marked *mf* and *cresc.* (crescendo). A guitar chord diagram for Eb is shown above the first measure.

CLIMBIN' HIGH! CLIMBIN' HIGH!

f

The piano accompaniment for the first vocal line features a rhythmic pattern of eighth notes in the right hand and a steady eighth-note bass line in the left hand. The right hand melody consists of quarter notes G4, A4, Bb4, and C5. The piece is marked *f*.

Give'er the gun, m' son, and hear that en - gine drone, You've got a date with

mf

The piano accompaniment for the second vocal line continues with the same rhythmic pattern. The right hand melody consists of quarter notes G4, A4, Bb4, and C5. The piece is marked *mf*.

fate, you know you're on your own High up in the sky.

The piano accompaniment for the final vocal line features a more complex rhythmic pattern with sixteenth notes in the right hand and a steady eighth-note bass line in the left hand. The right hand melody consists of quarter notes G4, A4, Bb4, and C5. The piece is marked *f*.

xx B7 xx Eb

CLIMBIN' HIGH! CLIMBIN' HIGH! Out where the grey hor -

xx F#o xx Eb xx F#o

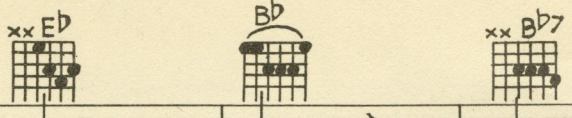
i - zon meets the break of day, Roll'er a-long a - bove the clouds and

xx Eb xx Eb7 xx Ab xx Bb7 xx Eb

far a - way, And keep 'er climb - in', CLIMB-IN' HIGH! ^

xx Eb xx Ab xx Eb xx Ab xx Eb xx Bb7

Ride the wings of the morn - ing, Strike with nev - er a warn - ing, Zoom'er up and



lose 'er in the blue. _____ Skies are burst-in' a - sun - der,

Thun - der o - ver and un - der, High - er, fly - er, it all de - pends on you To keep 'er

high! _____ CLIMBIN' HIGH! _____ You'll have your fun, m' -

son, before you head for home, You'll have your fun when you get back a -

xx F#° xx Eb xx Eb7 xx Ab Bb xx Bb7 xx Eb

round the drome, So keep 'er climb - in', CLIMB - IN' HIGH. ———

cresc. *sfz* *Fine.*

CODA xx Eb xx Gm xx Eb xx E° xx Bb7 Bb Bbm

I give you a toast, from coast to coast, to men of all the Force. Drink to the sun, the

mp *mp*

Fm x Db7 xx Bb7 xx Eb xx Bb6 xx Eb xx E°

moon, the stars that keep you on your course. Drink to the girl who thinks of you, where -

mf

xx Bb7 xx Eb xx E° xx Bb7 xx E° E7 xx Bb7 xx Eb

ev - er you may be; Drink to the ace you're goin' to face, and drink to vic - to - ry!

sfz *D.S.*

By the Writers of Climbin' High

Sung by Red Newman in "CHIN UP" We've Rolled Up The Old Umbrella

March Time >

T. Reginald Sloan

CHORUS

Oh, WE'VE ROLLED UP THE OLD UM - BER-EL-LA _____ And we've
hung up the old walk-ing cane, _____ We have packed a - way our

Novelty War Song

The Pretty Little Mitt That Kitty Knit

Words and Music by
JIMMIE COULTER, P.R.S. (Lond.)

We've been hear - ing quite a lot of prop - a - gan - da And it's such a fun - ny war you must ad -
mit, Tho' there's lots you can't be - lieve, I've the sto - ry up my sleeve Of the
PRET - TY LIT - TLE MITT THAT KIT - TY KNIT. With her need - les keep - ing time to Tip - pe -
ra - ry She de - ter - mined she would do her lit - tle bit. Some may fight their way to fame, Kitty
made it just the 'same With the PRET - TY LIT - TLE MITT that KIT - TY KNIT.