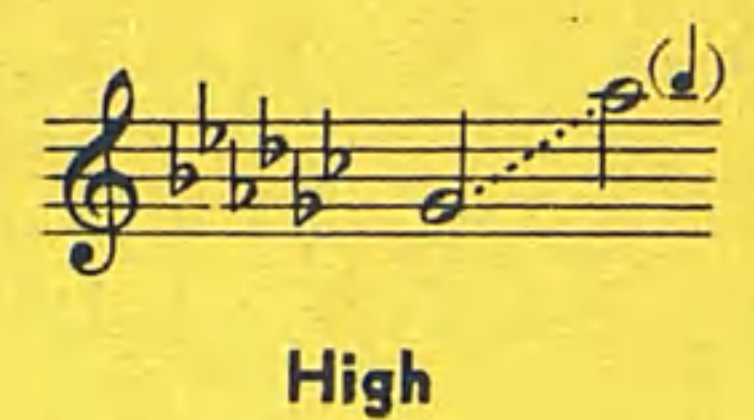
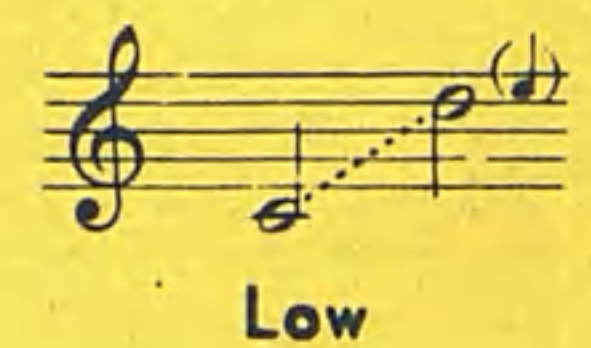


BY THE BEND OF THE RIVER

N285
185
c.1

SONG FOR VOICE
AND PIANO

by CLARA EDWARDS



50 cents

- DUET FOR SOPRANO AND ALTO OR BARITONE50
- PIANO SOLO50
- B \flat CLARINET OR TENOR SAXOPHONE AND PIANO (Arr. by Erik Leidzén)50
- E \flat CLARINET OR ALTO SAXOPHONE AND PIANO (Arr. by Erik Leidzén)50
- B \flat TRUMPET OR CORNET AND PIANO (Arr. by Erik Leidzén)50

Octavo Number	<i>Choral Versions</i>	Price
7304	Women's or Mixed Voices, 2 Parts12
7526	Women's Voices, 3 Parts15
7747	Mixed Voices, 4 Parts15
7775	Men's Voices, 4 Parts15

(Prices apply to U. S. A.)

G. SCHIRMER, INC.
NEW YORK

S

By The Bend Of The River

Bernhard Haig

Clara Edwards

Languido e grazioso

Voice

Piano

mp

mp

The gold - en moon - light, _____ the
 The blush of dawn - ing, _____ the

mf

gloom, My thoughts re - turn - ing _____ to home; _____ And with their
 day, The call of birds far _____ a - way; _____ The danc - ing

mf

cresc.

wing - ing — My heart is sing - ing — A song all — its
 sun - beams — All prove my day - dreams, — That love lives — al -

cresc.

dolce

own. — By the bend of the riv - er, — Where rush - es are
 way. —

dolce

grow - ing, — And wat - ers are flow - ing — Far down to the sea,

On a soft, balm-y June - night, — In the shim-mer-ing moon - light — I know that my

own true love Is wait-ing for me. *mf* In the cool of the eve - ning,

When shad-ows are fall - ing, *dolce* I can hear my love call - ing — So soft-ly to

me. *p* Through the scent of the heath - er, In fair sum-mer weath - er,

We'll drift down to - geth - er, My true love with me. me.

rit. 1. 2.

D.C.

pp *poco più lento* Ah! Ah!

poco più lento *pp* *l.h.*

Compositions by Clara Edwards

SONGS	HIGH		MEDIUM		LOW		Price
	Key	Range	Key	Range	Key	Range	
AFTER. (A Song of contrasts).....	D \flat	F-F			B \flat	d-D	.50
AWAKE, BELOVED!.....	D \flat	E \flat -a \flat	B \flat	c-F	B \flat	c-F	.50
A BENEDICTION (Orchestration available on rental).....	G	E-g			E \flat	c-E \flat	.50
BY THE BEND OF THE RIVER. (Orchestration available for High voice.) Also obtainable as a duet for Soprano and Alto or Baritone.....	G \flat	G \flat -a \flat b \flat	E \flat	E \flat -Fg	C	c-DE	.50
CAN THIS BE SUMMER?.....	Fm	E-a \flat			Cm	b-E \flat	.50
CLEMENTINE.....			G	E-E			.50
COME, LOVE, THE LONG DAY CLOSES.....	A \flat	E \flat -a \flat					.50
THE DAY'S BEGUN.....	D \flat	F-a \flat b \flat	A \flat	c-E \flat F	A \flat	c-E \flat F	.50
THE EASTERN HEAVENS ARE ALL AGLOW. Christmas song.....			D	d-D			.50
EVENING SONG.....	G	E-g			D	b-D	.50
FEAR YE NOT, O ISRAEL. (Sacred).....	B \flat m	d \flat -a \flat b \flat			Fm	a \flat -E \flat E	.75
INTO THE NIGHT.....	G	E-Fg	F	d-E \flat F	E \flat	c-D \flat E \flat	.50
MY HOMELAND.....	G	d-g			D	a-D	.40
EVERY ONE SANG. (A song of exultation).....	G	d-g					.50
THE FISHER'S WIDOW. (Orchestration available on rental).....	Cm	bF \sharp -ga	Cm	bF \sharp -ga	Am	g \sharp d \sharp -EF	.50
GIPSY LIFE.....	Em	E-g \flat	Bm	b-DF \sharp	Bm	b-DF \sharp	.50
LONESOME.....	A \flat	E \flat -g	A \flat	E \flat -g			.50
THE LORD IS EXALTED. (Sacred).....	D	d-F \sharp	D	d-F \sharp	B \flat	b \flat -d	.50
LOVE CAME TO ME.....	D	F-a					.50
MORNING SERENADE.....	D	E \flat -a \flat					.50
OUT OF THE DUSK.....	D	E-F \sharp	D	E-F \sharp	B \flat	c-D	.50
A PRAYER. (Sacred).....			G	d-E			.50
SOMETIMES AT CLOSE OF DAY.....	F	F-ga	F	F-ga	C	c-DE	.50
SONG OF THE BROOKLET.....	D \flat	E-F	D \flat	E-F			.50
SONG OF MY SOUL.....	Em	E-g					.40
SPAIN. (España.) s. e. (Orchestration available).....	Em	d-F \sharp	Em	d-F \sharp			.50
STARS OF THE NIGHT, SING SOFTLY.....	D \flat	E \flat -Fa \flat	D \flat	E \flat -Fa \flat			.50
TO STARS AND YOU.....	A \flat	E \flat -a \flat					.50
THE TWENTY-SEVENTH PSALM. THE LORD IS MY LIGHT.....	G	d-g			E \flat	b \flat -E \flat	.50
WHEN I AM GONE, BELOVED.....	G	c \sharp -g	G	c \sharp -g	E \flat	a-E \flat	.50
WHEN I BEHOLD. (Sacred).....			D	b-F \sharp	B \flat	g-D	.50
WHEN JESUS WALKED ON GALILEE. (Sacred).....	F	F-F	F	F-F	D \flat	d \flat -D \flat	.50
THE WILD ROSE BLOOMS.....	C	F \sharp -a	A \flat	d-F	F	b-D	.50
A YESTERDAY.....	G \flat	d \flat -g \flat b \flat					.50

The minimum and maximum range of every solo is carefully indicated—notes on the staff are indicated by capital letters; notes below or above the staff are indicated by small letters.

PIANO SOLOS

BY THE BEND OF THE RIVER. Barcarolle. Arranged by Carl Deis.....	.30
CLOUD WAYS.....	.40
NODDING FLOWERS.....	.25
THE ROCKING CHAIR.....	.30
THE SWING.....	.30
THE WAVES.....	.30

CHORAL ARRANGEMENTS

BY THE BEND OF THE RIVER: Mixed voices, 4-part. (Deis.) Octavo 7747.....	.15
4-part. (Deis.) Octavo 7775.....	.15
2-part (SA or SBar.). (Deis.) Octavo 7304.....	.12
Women's voices, 3-part. (Hemstreet.) Octavo 7526.....	.15
CLEMENTINE. Women's voices, 3-part. (Hemstreet.) Octavo 7582.....	.15
COME, LOVE, THE LONG DAY CLOSES. Men's voices, 4-part. (Downing.) Octavo 7850.....	.12
INTO THE NIGHT: Mixed voices, 4-part. (Downing.) Octavo 8674.....	.15
Men's voices, 4-part. (Downing.) Octavo 8675.....	.15
Women's voices, 3-part. (Ducrest.) Octavo 8676.....	.15
I WILL LIFT MINE EYES. Mixed voices, 4-part. (Treharne.) Octavo 7862.....	.15
A PRAYER. Mixed voices, 4-part. (Downing.) Octavo 7853.....	.12
SOMETIMES, AT CLOSE OF DAY. Men's voices, 4-part. (Downing.) Octavo 7851.....	.12
A SONG OF JOY. Women's voices, 3-part. Octavo 8439.....	.16
Women's voices, 2-part. Octavo 8440.....	.15
SONG OF THE BROOKLET. Women's voices, 3-part. (Downing.) Octavo 7854.....	.12
THE TWENTY-SEVENTH PSALM. Mixed voices, 4-part. (Downing.) Octavo 8520.....	.16
WHEN I BEHOLD. Mixed voices, 4-part. (Downing.) Octavo 7852.....	.12

G. SCHIRMER, Inc.

New York