

LET'S START THE NEW YEAR RIGHT

BS151
121

IRVING BERLIN'S

HOLIDAY INN



BE CAREFUL, IT'S MY HEART

WHITE CHRISTMAS

LET'S START THE NEW YEAR RIGHT

ABRAHAM

SONG OF FREEDOM

YOU'RE EASY TO DANCE WITH

I'LL CAPTURE YOUR HEART SINGING

PLENTY TO BE THANKFUL FOR

HAPPY HOLIDAY

IRVING BERLIN'S
"HOLIDAY INN"

STARRING

BING CROSBY • FRED ASTAIRE

A MARK SANDRICH
PRODUCTION

A PARAMOUNT PICTURE

IRVING BERLIN Inc.
Music Publishers

799 SEVENTH AVE., NEW YORK, N.Y.

Let's Start The New Year Right

From The Paramount Picture

Irving Berlin's

Holiday Inn

A Mark Sandrich Production

Words & Music by
IRVING BERLIN

Slowly

Piano introduction in B-flat major, 4/4 time. The piece begins with a *mf* dynamic. The melody is characterized by a descending eighth-note line in the right hand and a steady bass line in the left hand. The tempo is marked *Slowly*. The introduction concludes with a *rall.* (ritardando) marking.

VOICE *ad lib.*

+) Eb Cdim Fm7 Fdim Eb Cm7 Fm7 Bb7

One min - ute to mid - night, One min - ute to go.

The vocal line is in B-flat major, 4/4 time. It features a simple, melodic line with a descending eighth-note pattern. The lyrics are: "One minute to midnight, One minute to go." The tempo is *Slowly*.

con la voce

Piano accompaniment for the first vocal phrase. It features a steady bass line and a melody in the right hand that supports the vocal line. The dynamic is *mf*. The tempo is *Slowly*.

Eb Ab Eb Fm7 Bb7 Eb

One min - ute to say "good - bye" be - fore we say "hel - lo."

The vocal line continues with the lyrics: "One minute to say 'good-bye' before we say 'hello.'" The tempo is *Slowly*.

Piano accompaniment for the second vocal phrase. It features a steady bass line and a melody in the right hand that supports the vocal line. The dynamic is *mf*. The tempo is *Slowly*. The piece concludes with a *Ped.* (pedal) marking and an asterisk.

+) Symbols for Guitar, Chords for Ukulele and Banjo.



CHORUS *a tempo*

LET'S START THE NEW YEAR RIGHT — Twelve o' - clock to - night —

a tempo *mf - f*

Fm7 Bb7 Eb Eb dim 3

When they dim the light — let's be - gin, —

Bb7 Bb dim

Kiss - ing the old — year out. —

Bb9 Eb

Kiss - ing the new — year in. — Let's watch the

F dim Cm

Fm7 Bb7 Eb Eb dim

old year die — With a fond “good - bye” — And our

Bb7 Gm7 C7

hopes as high — as a kite.

Bbm C7 Cm7 Abm Eb

How can our love — go wrong If we start the

rall.

1. 2. Eb

Fm7 Bb7

New Year right. — LET'S START THE right. —

a tempo

FOUR OUTSTANDING SONG SUCCESSES

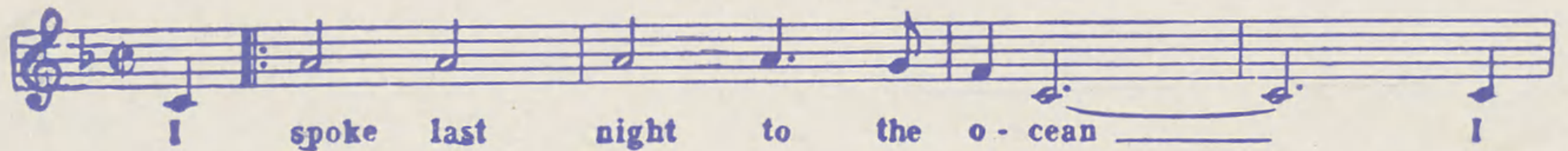
PLAY THEM ON YOUR PIANO



I THREW A KISS IN THE OCEAN

THE HIT OF 1942

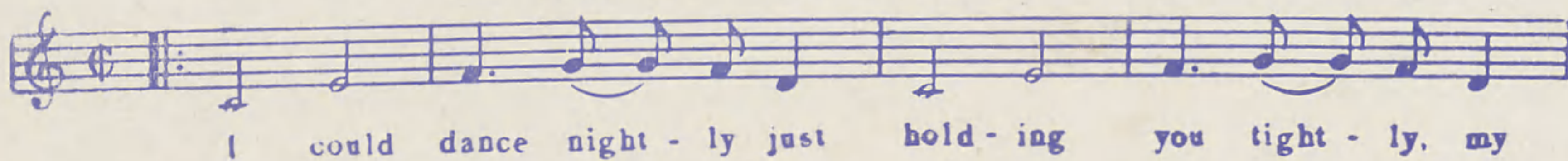
By IRVING BERLIN



Copyright 1942 by Irving Berlin Inc., 799 Seventh Avenue, New York City

You're Easy To Dance With

From the new Paramount Picture "HOLIDAY INN" by IRVING BERLIN
featuring BING CROSBY and FRED ASTAIRE



Copyright 1942 by Irving Berlin Inc., 799 Seventh Avenue, New York City



Be Careful, It's My Heart

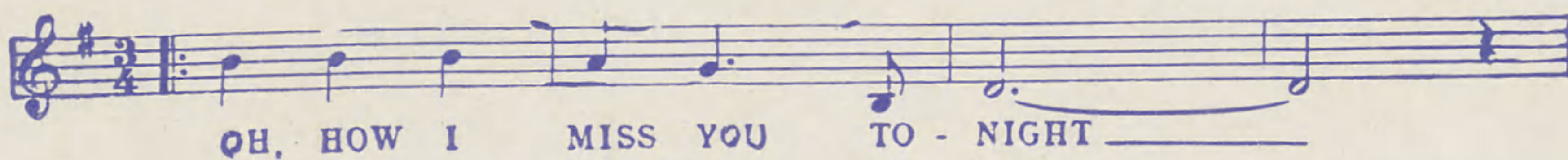
From the new Paramount Picture "HOLIDAY INN" by IRVING BERLIN
featuring BING CROSBY and FRED ASTAIRE



Copyright 1942 by Irving Berlin Inc., 799 Seventh Avenue, New York City

OH, HOW I MISS YOU TONIGHT

THE MEMORY SONG OF YESTERDAY — THE HIT OF TODAY



Copyright 1925 by Irving Berlin Inc., 799 Seventh Avenue, New York City



ALSO PUBLISHED FOR ORCHESTRA

ORDER FROM YOUR NEAREST
DEALER. OR DIRECT FROM

IRVING BERLIN Inc., 799 7th Ave., N. Y. C.