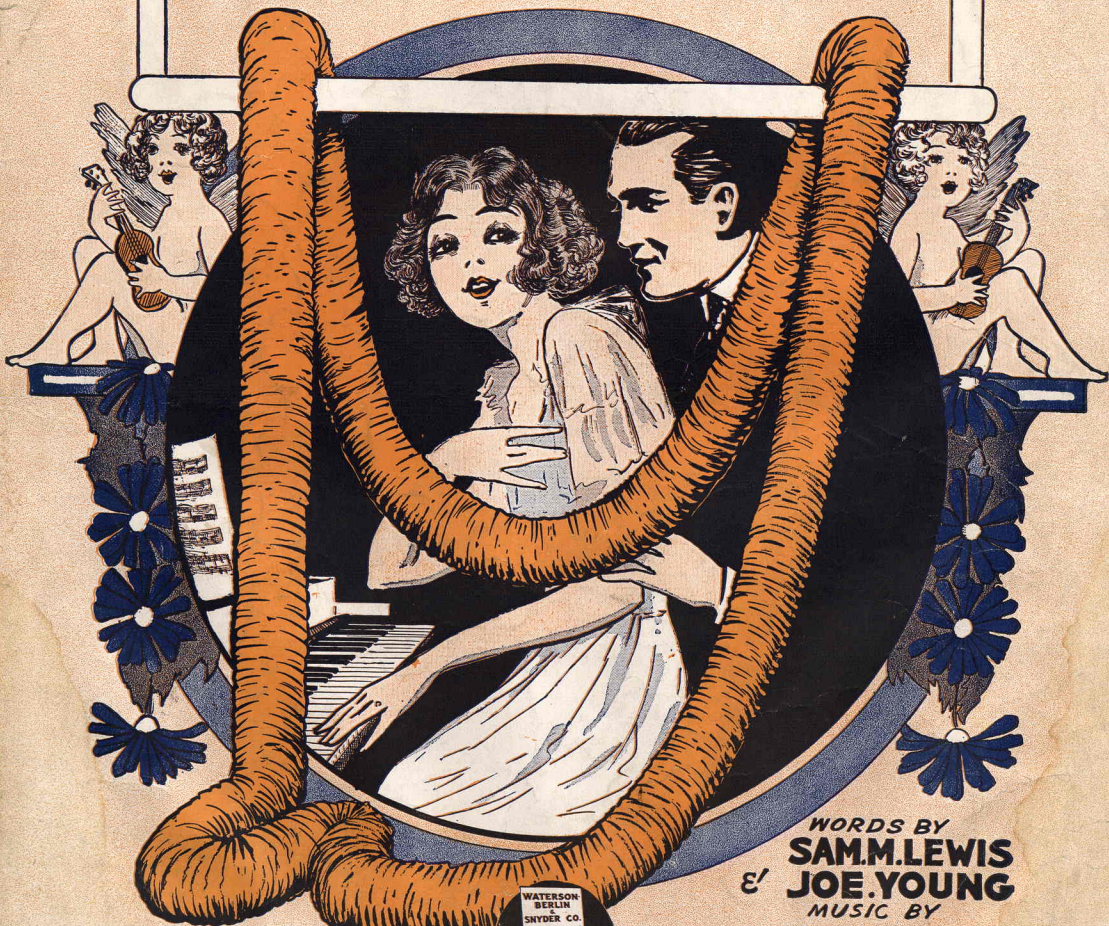


3 - OCT 30
Copy 1973

YADDIE KADDIE KIDDIE KADDIE KOO



GARDNER

WATSON
BERLIN
SNYDER CO.
Music Publishers
Sound Theatre Bldg
Broadway at 42nd St
NEW YORK

WORDS BY
SAMM LEWIS
&
JOE YOUNG
MUSIC BY
GEO. W. MEYER

Yaddie Kaddie Kiddie Kaddie Koo.

Lyric by
SAM M. LEWIS and
JOE YOUNG.

Music by
GEO. W. MEYER.

Moderato

Piano introduction in G major, 2/4 time. The right hand features a rhythmic melody with eighth and sixteenth notes, while the left hand provides a steady accompaniment of chords and single notes.

VOICE.

Till Ready.

Ev'-ry night I hear my neigh-bors
Whenthe milk-man called a-round this

The vocal line begins with a rest, followed by the lyrics. The piano accompaniment continues with a rhythmic pattern, including a section marked *p* (piano).

sigh - in', _____ "If you lik - a me like I like you, _____
morn - ing, _____ I asked him to leave a pint or two, _____

The vocal line continues with the lyrics. The piano accompaniment provides harmonic support with chords and moving lines in both hands.

Yad - die Kad - die Kid - die Kad - die Koo;" _____ That's just how they _____
He said "Yad - die Kad - die Kid - die Koo;" _____ When the land - lord _____

The vocal line continues with the lyrics. The piano accompaniment continues with its rhythmic accompaniment.

make love in Ha - wai - ian, _____ Ev'-ry time she says "I'm feel - ing _____
calls I'm al - ways yawn - ing, _____ He don't ev - er say "the rent is _____

The vocal line concludes with the lyrics. The piano accompaniment provides a final harmonic setting for the piece.

blue," He says "Yad-die Kad-die Kid-die Koo,"
 due," All he says is "Yad-die Kad-die Koo,"

Man - y, man - y nights I've spent, — Wond'ring what the darn thing meant, —
 Butch - er, ba - ker, jan - i - tor, — When they knock up - on my door, —

Yad-die Kad-die Kid-die Kad-die Koo, — Still I don't know what it means, do you?
 I say "not to - day, I'm feel - ing blue," — They say "Yad-die Kad-die Kid-die Koo,"

CHORUS

Please tell me, why do they sing — that sil - ly thing? — Yad-die Kad-die Koo, Love your dad - dy, do,

Kid-die Koo, — he loves you; — That mel - o - dy — from Wai - ki - ki,

Has - n't an - y sense, un - til they com - mence "Yad-die Kad-die Kid-die Kad-die Koo." Koo." *D.S.*

AVERY BEAUTIFUL BALLAD THAT'S BOUND TO REACH THE HEART OF THE SONG LOVER

WRITTEN BY THE SONG GENIUS

IRVING BERLIN

When The Black Sheep Returns To The Fold.

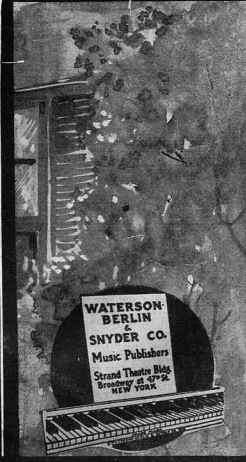
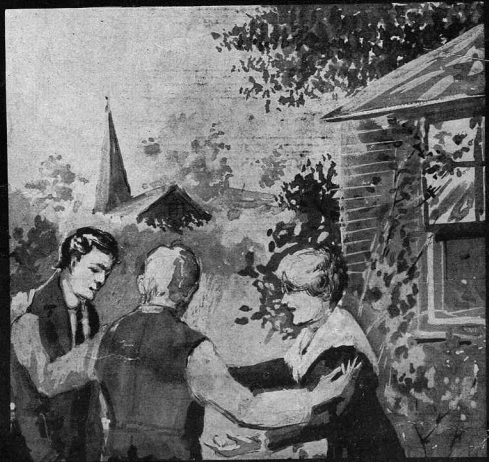
Chorus.

Ev - ery thing that he did is for - got - ten, And they wel - come him back to the fold,

He knows by their sad wrinkled fa - ces, That the pain of his ab - sence has told, Once a -



Copyright MCMXVI by Waterson, Berlin & Snyder Co. Strand Theatre B'ldg. B'way, N.Y.
International Copyright Secured.



Scanning Target

Edison Sheet Music

Item no.: 100007277

Title: Yaddie Kaddie kiddie Kaddie koo

Box no. and finding aid no.: 53/3596

Cover to be scanned in color: yes

Digitization note:

Contact: Karen Lund, x70156
Andrea Buntz, x71606
Lauren Woodis, x73939
Pat Padua, x75904