

2075

TREES

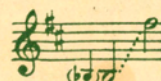
SONG

Poem by
JOYCE KILMER

Music by
OSCAR RASBACH

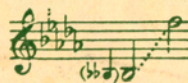
High Voice

→ Med. Voice



Med. Voice

Low Voice



Price, 50 cents, net
(In U. S. A.)



G. SCHIRMER, Inc.

New York

T

Trees

JOYCE KILMER*

OSCAR RASBACH

Andante

p

I think that I shall nev-er see

A po-em love-ly as a tree. A tree whose hungry mouth is prest

A-gainst the earth's sweet flow-ing breast; A tree that looks at God all

day, And lifts her leaf-y arms to pray;

p

* Words used by permission of Aline Kilmer

Printed in the U. S. A.

Copyright, 1922, by G. Schirmer Music Stores, Inc.
Copyright assigned, 1922, to G. Schirmer, Inc.

p

A tree that may in sum-mer wear A nest of rob-ins in her hair;

gradually faster

Up-on whose bos-om snow has lain; Who in-ti-mate-ly lives with

f *broadly* *f* *mp rit.*

rain. _____ Po - ems are made by fools like me, _____ But on-ly

God can make a tree.

p a tempo *dolce*

AMERICAN SONGS for ALL SINGERS

*A Group of Successful New Songs That Appear
on the Programs of Many Leading Artists*

BASSETT, K. W., Passion-Flowers. High, Low
BRACY, S., My Little Bundle of Love. High
CLARK, K. S., The House by the Side of the
Road. High, Low
COX, R., Garden Gossips. High, Low
CURRAN, P. G., Nocturne. High, Med., Low
To Eostra (Spring Song). High, Low
DOBSON, T., Cargoes. High or Med., Low
DODGE, M. H. & J. W., 'Tis Springtime. High,
Low
EDWARDS, C., A Yesterday. High
ELLIS, C. O., God Keep You, Dear (Twilight Song).
Medium
GRUNN, H., When the Dark Mist Curtains the
Doorway. High, Low
HAGEMAN, R., Animal Crackers. High, Low
HUARTE, J., Madrigal Español (Spanish Madri-
gal). High, Low
HUERTER, C., To-Day. High, Low
LEONI, F., Tally-Ho! High or Med., Low
MANA-Z UCCA, Ah, Love! Will You Remember?
High, Low
O'HARA, G., The Unknown Soldier. High, Low
OLMSTEAD, C., Starlight. High, Low
RASBACH, O., Trees. High, Med., Med., Low
ROGERS, J. H., The Last Song. High, Med., Low
Love's on the Highroad. High, Low
SPEAKS, O., A Song of Gladness. High, Low
Star-Eyes. High, Med., Low
STRICKLAND, L., Miss You So (A Southern
Song). High, or Med.
TURNER-MALEY, F., A Pastorale. High, Low
VIBBARD, H. L., My Garden. High
WOODMAN, R. H., Sundown. High, Low
WORTH, A., The Time of Violets. High, Low

LIBRARY OF
BILLIE ROBERTA HARMON,
PANA, ILLINOIS.

*A handsome thematic brochure of these songs, printed in two
colors throughout, will be sent free to any address upon request.*

G. SCHIRMER, INC., NEW YORK