

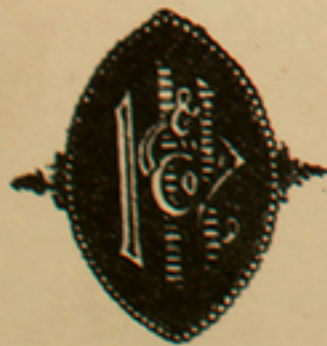
SHE IS A BROADWAY BLONDE

March Song and Chorus.



By
Safford Waters.

AUTHOR OF
"THE NEW MARGUERITE"
"THE SUMMER MAN."
"SWEET KATY LEARY."
Etc. Etc.



Published by
HOWLEY, HAVILAND & CO.

4 East 20th Street,
— NEW YORK.



A Broadway Blonde.

Words & Music by SAFFORD WATERS.

Tempo marcato a la marziale.

Intro.

The piano introduction consists of two staves (treble and bass clef) in 2/4 time. It features a rhythmic melody with accents and dynamic markings of *f* and *mf*.

1. On the ri - al - to one day I en -
 2. "Tell me" said I "what's her name" "What's her
 3. Then to the the-a-tre I went And I

The first system of the song includes a vocal line and piano accompaniment. The piano part features a triplet of eighth notes in the right hand.

count - ed a beau - ti - ful maid Of a style I ad - mire with a
 name, and her ad - dress as well" Does she come o'er the sea from the
 sought for her near and a - far For I felt on the stage she was

The second system continues the vocal and piano parts. The piano accompaniment includes a triplet of eighth notes in the right hand.

top knot of fire One who took the en - tire prom - e - nade _____
 no - bil - i - ty Does she stop at the "Wal - dorf Ho - tel" _____
 sure - ly the rage Quite the bright and par - tic - u - lar star _____

The third system concludes the vocal and piano parts. The piano accompaniment features a triplet of eighth notes in the right hand.

Ev - 'ry one turned as she passed To dis - cov - er who e'er she might
 Is she the talk of the town As she grace - ful - ly sails up and
 But when she greet - ed my eyes There was naught to ex - press my sur -

be "It's La - Loie" said a few "Ciss - y Fitz" one or two But
 down Of the girls I have seen she is ea - si - ly queen This
 prise When at last 'twas dis - closed in the chor - us she posed This

all I could say was "Gee" When a cop - per who stood on the
 nymph of the au - burn crown But the cop - per who stood on the
 maid with the swell dis - guise And I thought of the cop on the

cor - ner made this ex - pla - na - tion to me -
 cor - ner gave this in - for - ma - tion to me -
 cor - ner and his in - for - ma - tion to me -

(With a slight Irish brogue.)

REFRAIN.

She is a Broad-way Blonde And her hair is shin-ing gold It's

eigh-teen car-ats red they say and it cost her a lot I'm told _____

She is a Broad-way Blonde All the boys of her are fond Some

say it's a wig but she don't care a fig Just be-cause she's a Broad-way Blonde _____