

M 9355  
655

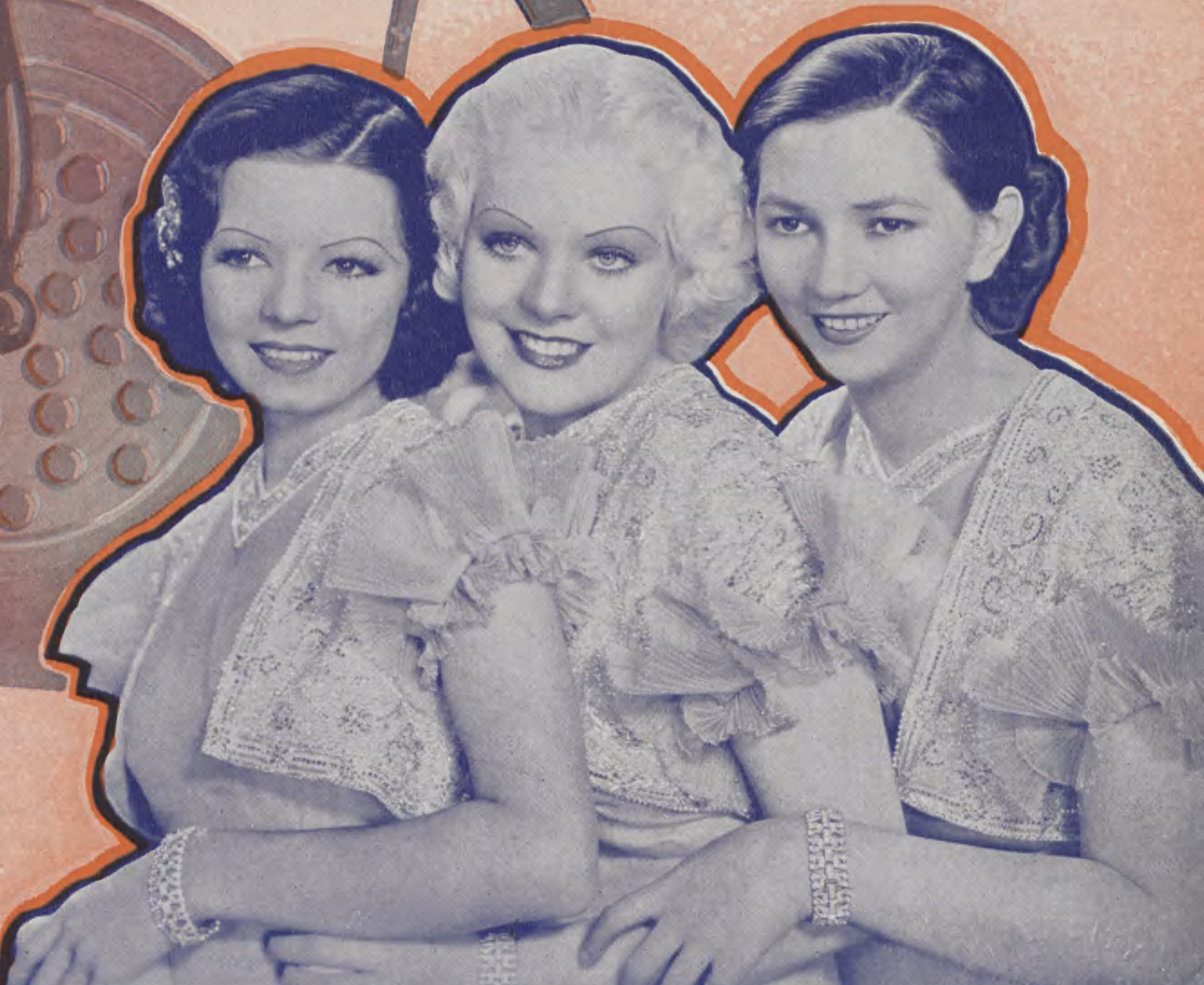
# I'M IN THE MOOD FOR LOVE

Lyric and Melody by JIMMY McHUGH and DOROTHY FIELDS

*George RAFT and Alice FAYE*  
*in the WALTER WANGER Production*  
**"EVERY NIGHT AT EIGHT"**

*with*  
FRANCES LANGFORD, PATSY KELLY  
THE 3 RADIO ROGUES and HARRY BARRIS

*A  
Paramount  
Picture*



**ROBBINS MUSIC CORPORATION**  
799 SEVENTH AVENUE - NEW YORK

LIBRARY



# Three Hits from the Walter Wanger Production, "Every Night At Eight"

Sung by Alice Faye, Frances Langford and Patsy Kelly

## I Feel A Song Comin' On

Featured in the Walter Wanger Production "Every Night At Eight"

By { JIMMY Mc HUGH  
DOROTHY FIELDS  
GEORGE OPPENHEIMER

Chorus (*Brightly*)

The musical score for "I Feel A Song Comin' On" consists of a vocal line and a piano accompaniment. The vocal line is in G major and 4/4 time, with lyrics: "I Feel a Song Com - in' On". Above the vocal line are guitar chord diagrams for Eb, Fm7, Bb7, Ab, Bb7, and Eb. The piano accompaniment is in G major and 4/4 time, marked *mf a tempo*.

Copyright 1935 by Robbins Music Corporation, 799 Seventh Ave., New York, N.Y.  
International Copyright Secured Made in U.S.A. All Rights Reserved

Sung by Alice Faye, Frances Langford and Patsy Kelly

## Take It Easy

Featured in the Walter Wanger Production "Every Night At Eight"

Lyric and Melody by  
JIMMY Mc HUGH and  
DOROTHY FIELDS

Chorus, Moderato (*with rhythm*)

The musical score for "Take It Easy" consists of a vocal line and a piano accompaniment. The vocal line is in G major and 4/4 time, with lyrics: "Take It Ea - sy! Be a sport! Just re - mem - ber life is short". Above the vocal line are guitar chord diagrams for Eb, Fm7, Bb7, Eb, Fm7, and Bb7. The piano accompaniment is in G major and 4/4 time, marked *mf a tempo*.

Copyright 1935 by Robbins Music Corporation 799 Seventh Ave., New York, N.Y.  
International Copyright Secured Made in U.S.A. All Rights Reserved

Sung by Alice Faye

## Speaking Confidentially

Featured in the Walter Wanger Production "Every Night At Eight"

Lyric and Melody by  
JIMMY Mc HUGH and  
DOROTHY FIELDS

Chorus (*with feeling*)

The musical score for "Speaking Confidentially" consists of a vocal line and a piano accompaniment. The vocal line is in G major and 4/4 time, with lyrics: "Speak-ing Con-fi - den-tial - ly Have I ev - er told you you're ter - rif - ic, You're as". Above the vocal line are guitar chord diagrams for Eb, Fm7, Bb7, Eb, Fm7, and Bb7. The piano accompaniment is in G major and 4/4 time, marked *mf a tempo*.

Copyright 1935 by Robbins Music Corporation 799 Seventh Ave., New York, N.Y.  
International Copyright Secured Made in U.S.A. All Rights Reserved

Complete Song May Be Purchased From Your Favorite Dealer



Sung by Frances Langford

# I'm In The Mood For Love

Featured in the Walter Wanger Production "Every Night At Eight"

Lyric and Melody by  
JIMMY Mc HUGH and  
DOROTHY FIELDS

Moderato (with feeling)

a tempo

C Cmaj.7 Dm dim C Am Dm7 G7 Am Dm7

Love-ly in-ter-lude! Most ro-man-tic mood and your at-ti-tude is right, dear. Sweet-heart!

C dim Dm G7 C C dim G7 C Cmaj.7 Dm dim

You have me un-der a spell! ————— Now my dream is real! That is why I feel

C Am E C7 F#m7 E F#m7 B7 E A7 D7 G7

Such a strong ap-pear to - night! Some - how! All my rea-son takes flight! Dear

CODE: Mood

SH 1329-3

International

Copyright 1935 by Robbins Music Corporation 799 Seventh Ave., New York, N.Y.

Copyright Secured

Made in U.S.A.

All Rights Reserved



Chorus, *moderato (with feeling)*

C Dm7 G7 C

I'm In The Mood for Love      Sim-ply be - cause you're near me

dim Dm7 G7 C Dm7 Gaug

Fun - ny, but when you're near me      I'm In The Mood For Love

C Dm7 G7 C

Heav - en is in your eyes      Bright as the stars we're un - der

dim Dm7 G7 C Dm7 Gaug

Oh! Is it an - y won - der      I'm In The Mood For Love?



Dm7 G7 C Gm6 A7 Fm G7 C

Why stop to think of wheth - er This lit - tle dream might fade?

Am6 B7 Em Cm6 D7 Fm G7

We've put our hearts to - geth - er Now we are one, I'm not a - fraid!

C Dm7 G7 C

If there's a cloud a - bove If it should rain we'll let it

dim Dm7 G7 C dim G7 C

But for to-night, for - get it! I'm In The Mood For Love Love -

SH 1329-3

ASK YOUR DEALER FOR  
*The Greatest of All Song Collections*  
**AMERICA SINGS**  
**COMMUNITY SONG BOOK**

*Includes such hits as*  
 "MARCHING ALONG TOGETHER" "ANCHORS AWEIGH" "PAGAN LOVE SONG"  
 "SINGIN' IN THE RAIN" "WHEN THE MOON COMES OVER THE MOUNTAIN" etc.



# MUSIC IN THE MODERN MANNER . . . FROM ROBBINS



THREE NEW PIANO CLASSICS IN THE CURRENT IDIOM  
BY FOREMOST MODERN COMPOSERS

## PETER DE ROSE'S DEEP PURPLE

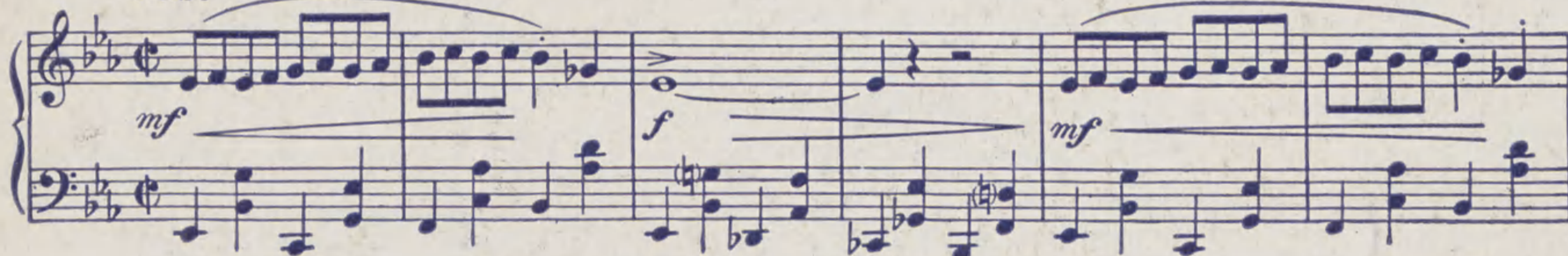
Moderato espressivo



Copyright 1935 by Robbins Music Corporation, 799 Seventh Ave., New York, N. Y.

## REGINALD FORESYTHE'S DODGING A DIVORCEE

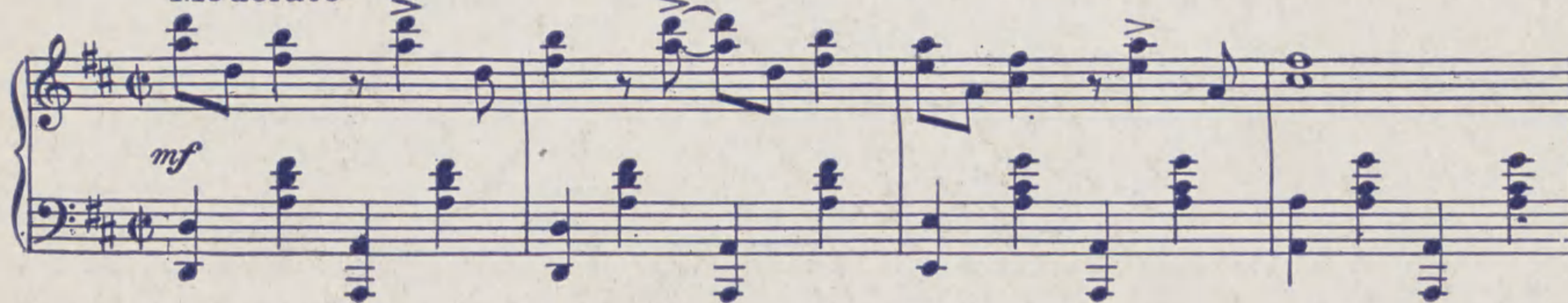
Fast



Copyright 1935 for all Countries by the Irwin Dash Music Co., Ltd., 10, Denmark St., London, W.C. 2.  
Sole and Exclusive Agents for the United States and Canada, Robbins Music Corporation, New York, N. Y.

## HARRY SOSNIK'S GAYETY

Moderato



Copyright 1934 by Robbins Music Corporation, 799 Seventh Ave., New York, N. Y.

A velour musical pattern by Peter De Rose in four movements, inspired by the blaze of rich colors in the rainbow. The composer using the keyboard as a palette, paints a brilliant canvas of "Deep Purple."

Reginald Foresythe, composer of "Serenade for a Wealthy Widow," contributes this unique and impressively modern piano composition. A worthy musical addition to any modern library.

Harry Sosnik has created a distinctively outstanding composition. Pianists who play in the modern mood will welcome this masterly opus.

COPIES AT YOUR  
MUSIC DEALER'S

These Three Numbers Also Published for Orchestra

# ROBBINS MUSIC CORPORATION

799 SEVENTH AVENUE

NEW YORK