

GUYS AND DOLLS

L826
27
58¢

by FRANK LOESSER



FEUER AND MARTIN present

GUYS & DOLLS

A MUSICAL FABLE OF BROADWAY

Based on a story
and characters by
DAMON RUNYON

Music and Lyrics by
FRANK LOESSER

Staged by
GEORGE S. KAUFMAN



Book by

JO SWERLING and ABE BURROWS

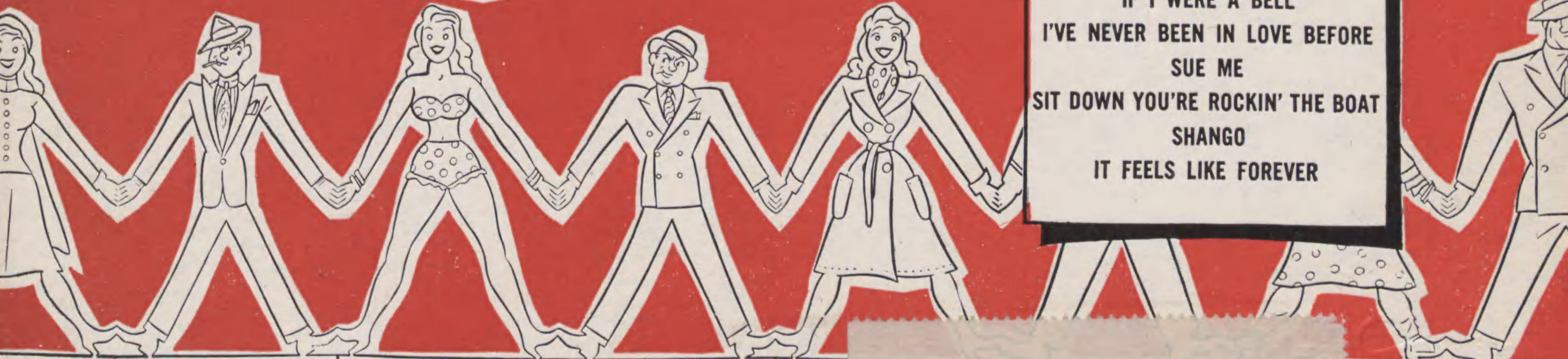
Dances and musical
numbers staged by
MICHAEL KIDD

Settings and
lighting by
JOE MIELZINER

Costumes by
ALVIN COLT

Songs from the Score

GUYS AND DOLLS
I'LL KNOW
FOLLOW THE FOLD
MY TIME OF DAY
FUGUE FOR TINHORNS
TRAVELING LIGHT
LUCK BE A LADY
MORE I CANNOT WISH YOU
A BUSHEL AND A PECK
IF I WERE A BELL
I'VE NEVER BEEN IN LOVE BEFORE
SUE ME
SIT DOWN YOU'RE ROCKIN' THE BOAT
SHANGO
IT FEELS LIKE FOREVER



Musical Director
IRVING ACTMAN

Orchestral
Arrangements by
GEORGE BASSMAN

Vocal Arrangements
and Direction by
HERBERT GREENE

FRANK MUSIC CORP.

SOLE SELLING AGENT
1610 75th ST. MUSIC, INC.
4th ST. NEW YORK 19, N.Y.

GUYS AND DOLLS

From the Broadway Production "GUYS and DOLLS"

TUNE UKULELE A D F# B

By FRANK LOESSER

Moderato (not too brightly)

l.h. mp

C Ddim Dm7 Em C Ddim Dm7 G C

1. When you see a guy — reach for stars in the sky —
 see a dame — change the shape of her frame —

Cmaj7 C9 F G9 Cmaj7 Dm7 G9

You can bet that he's do - ing it for some
 You can bet she's re - duc - ing it for some

C B+ Bb7 A7+ Dm C#+

doll; When you spot a
 guy; When you find a



Copyright 1950 by Frank Loesser
 Rights throughout the world controlled by Susan Publications, Inc.
 Sole Selling Agent: EDWIN H. MORRIS & COMPANY, Inc., 1619 Broadway, New York 19, N.Y.
 International Copyright Secured Engraved & Printed in U. S. A.
 All Rights Reserved Including Public Performance For Profit

Dm7
B+
B7
E7
E7b5
A7

John Doll wait - ing out in the rain _____ Chan - ces
 Doll with her dia - mond in hock _____ Rest as -

Dm
Dm7
E7b5
A

are he's in - sane as on - ly a John can
 sured that the rock has gone to re - stock some

Fm6
G9
C
Ddim
Dm7
Em
C

be for a Jane. _____ When you meet a gent _____
 gen - tle - man Jock. _____ When you see a mouse _____

Ddim
Dm7
G
C
Cmaj7
C9

_____ pay - ing all kinds of rent _____ For a
 _____ hur - ry out of the house _____ And she

F G9 Cmaj7 Dm7 G9 C B+ Bb7 A7+

flat runs that could flat - ten the Taj Ma - hal Call it
 twen - ty blocks for ci - gars and rye Call it

Dm Dm7 B+ B7 C Bb

sad, call it fun - ny, but it's bet - ter than e - ven mon -
 dumb, call it clev - er, ah, but you can give odds for - ev -

A+ A7 A7+ Dm C# Dm7 G9 Dm7 G7

ey That the guy's on - ly do - ing it for some
 er That the doll's on - ly do - ing it for some

1. C G9b5 G9 C Fdim 2. C Bb9 C

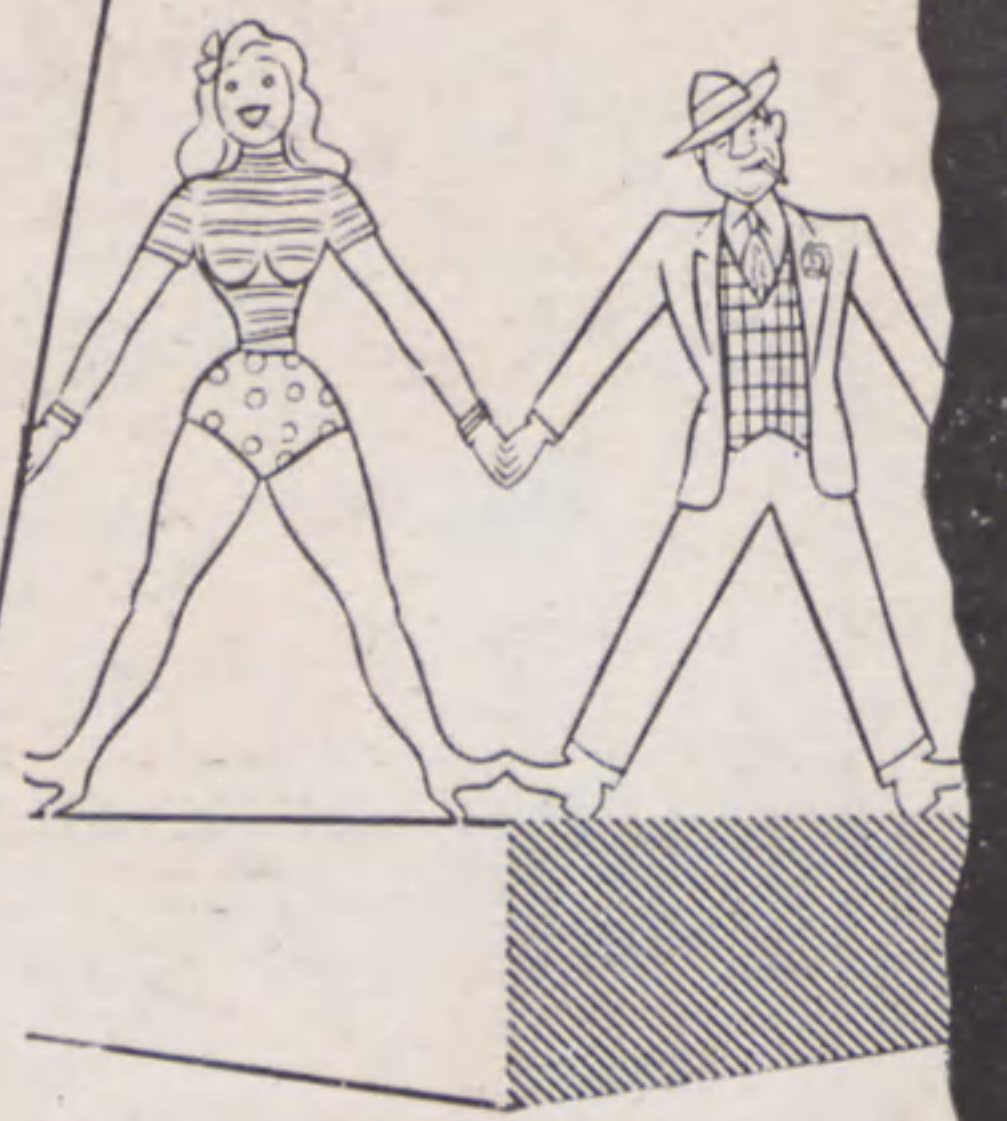
doll. (2.) On the oth - er hand: When you guy.

mp

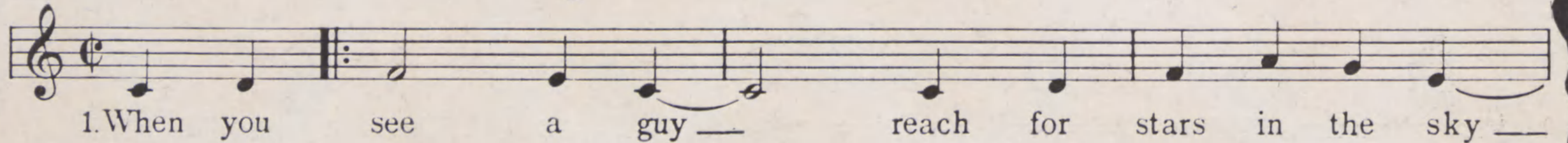
Songs from the Score

GUYS & Dolls

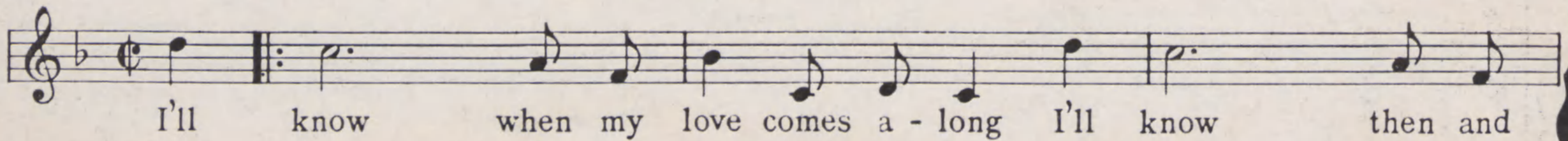
A MUSICAL FABLE OF BROADWAY
LYRICS AND MUSIC BY
FRANK LOESSER



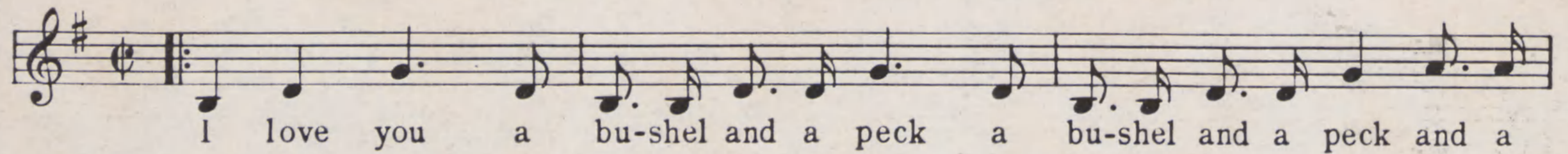
Guys And Dolls



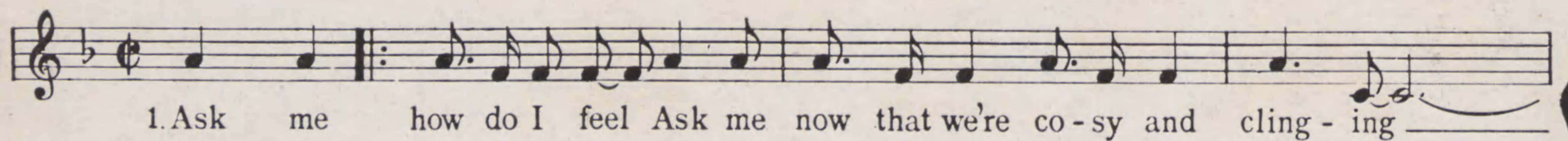
I'll Know



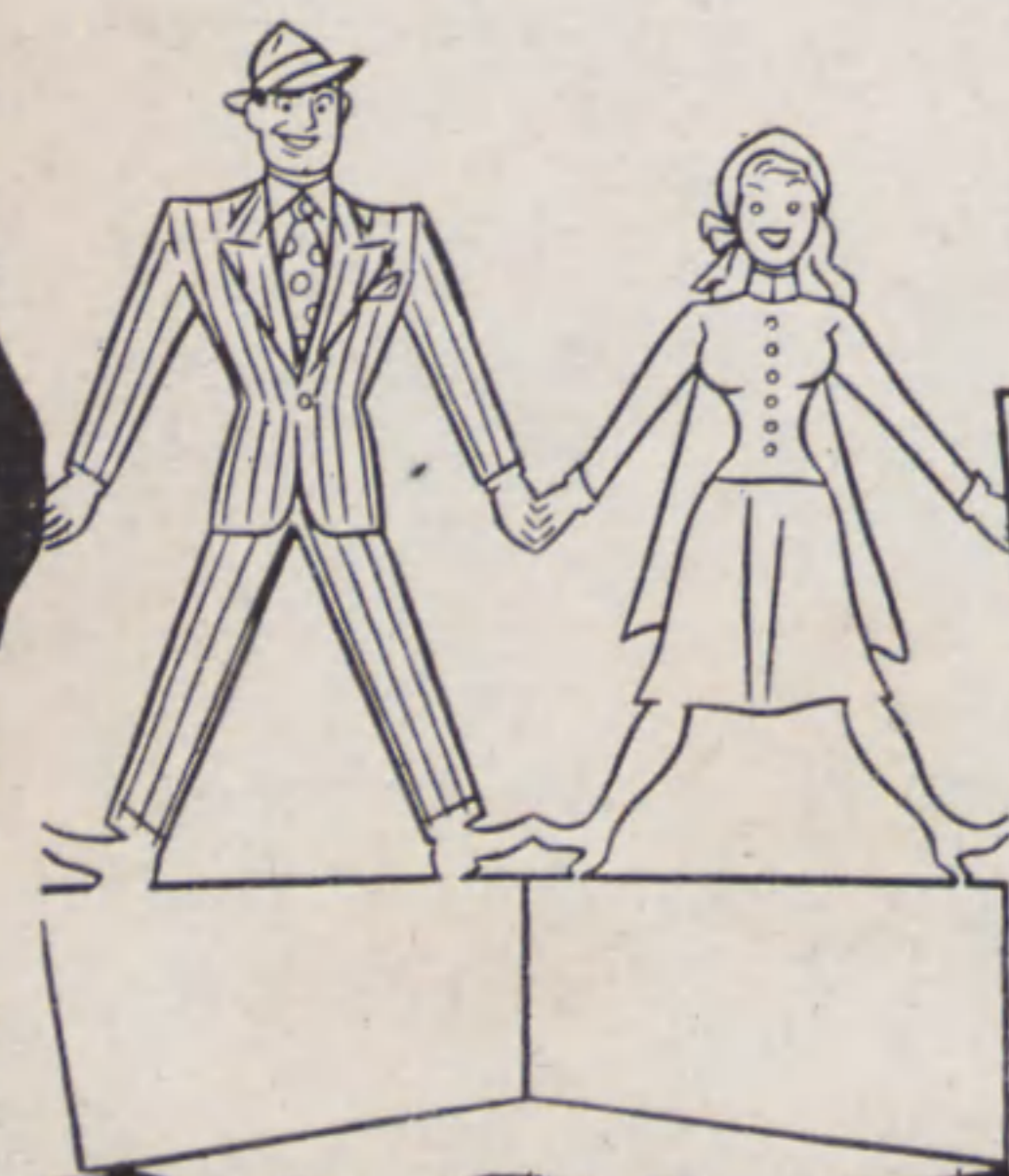
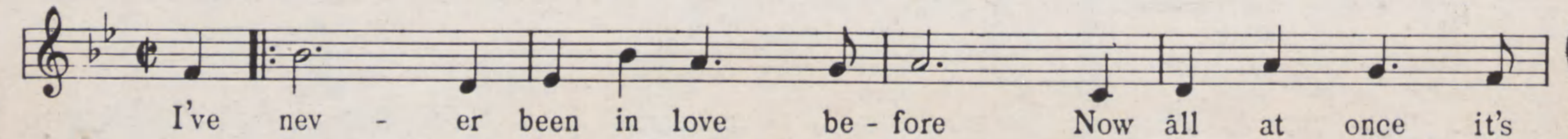
A Bushel And A Peck



If I Were A Bell



I've Never Been In Love Before



SUSAN PUBLICATIONS, INC.

EDWIN H. MORRIS AND COMPANY, INC.

Sole Selling Agents

1619 BROADWAY

NEW YORK 19, N. Y.