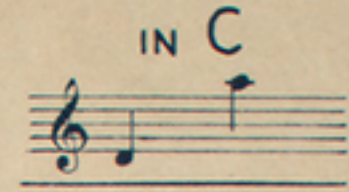
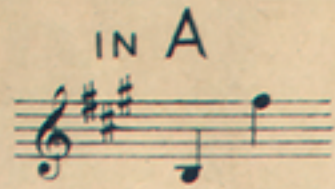


Gertrude Field

AS SUNG IN THE OPERA
"FOXY QUILLER."



Can I Forget?

SONG

Words by

HELEN HAY

Music by

REGINALD de KOVEN.

Pr. 50¢

EDWARD SCHUBERTH & CO.,

(J. F. H. MEYER.)

NEW YORK,
23 UNION SQUARE.

LONDON,
2 STAR YARD, CAREY ST

Dépôts:
LONDON, E. ASCHERBERG & CO., 46 BERNERS ST.
LEIPZIG, C. DIECKMANN, 21 TÄUBCHENWEG.

To
Miss HELEN BERTRAM.

CAN I FORGET?

Song.
SOPRANO OR TENOR.

Words by
HELEN HAY.

Music by
REGINALD deKOVEN.

Andante con moto

PIANO

con sentimento

mf

dim.

The piano introduction consists of two staves (treble and bass clef) in 3/4 time. It features a series of chords and melodic lines. The first staff has a treble clef and the second has a bass clef. The music is marked with 'con sentimento', 'mf', and 'dim.'. There are seven measures in total, with a 'Ped.' (pedal) marking under the first, third, fifth, and seventh measures, and an asterisk under the second, fourth, and sixth measures.

mf

1. Can one long dead for - get the
2. For your dear sake I lost the

rall.

a tempo.

pp

This section contains the vocal melody and piano accompaniment for the first two lines of lyrics. The vocal line is on a single staff with a treble clef. The piano accompaniment is on two staves (treble and bass clef). The lyrics are: '1. Can one long dead for - get the' and '2. For your dear sake I lost the'. The music is marked with 'mf', 'rall.', and 'a tempo.'. The piano part has a 'pp' (pianissimo) marking.

rose, _____ The sweet-ness of the laugh - ing spring? _____
light, _____ My sun that shone with - in your eyes; _____

This section contains the vocal melody and piano accompaniment for the final line of lyrics. The vocal line is on a single staff with a treble clef. The piano accompaniment is on two staves (treble and bass clef). The lyrics are: 'rose, _____ The sweet-ness of the laugh - ing spring? _____' and 'light, _____ My sun that shone with - in your eyes; _____'. The music is marked with '>' (accent) above the notes.

cresc.

Not so, his heart im-pa-tient knows That life and love are on the
 I left you dear, then came the night: For love is not a rose that

p *cresc.*

f *poco rall.* *dim.*

wing, well knows that life and love are on the wing.
 dies, for love, for love, is not a rose that dies.

f *rall. colla voce* *dim.*

a tempo. poco agitato.

Ah, dream of youth in love's so drear De-cem-ber,
 But tho' you chide, one tie I will not sev-er,

a tempo. *poco agitato*

cresc.

Be death my por-tion, still I must re-mem-ber.
 I keep the past for-ev-er and for-ev-er.

cresc.

Red. * *Red.* *

ff con passione

Can I for - get, dear heart, can I for - get?
 Can I for - get, dear love, can I for - get?

Can I for - get, Sweet-heart, for - get! Ah!

mf con anima.

Can I for - get the sun - shine in this night of sor - row,

portando

Can I for - get _____ be - cause you bid me dear, _____

cresc. - - - *sem - - pre* *f pressando*

Give up the past be_cause our life holds no to_mor - row? Heart of my *pressando*

cresc. - - - *sem - - pre*

ff *allarg.*

heart, heart of my heart, heart of my heart! Can I for_get the

ff *allarg.*

1. mf *rall.* *a tempo.*

love of yes - ter_year.

rall. *a tempo.*

2. rall. *a tempo.*

love of yes - ter_year.

rall. *a tempo.* *p*