

# NIGHT



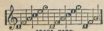
*Words by*  
**BENNY DAVIS**

WRITER OF  
MAKE BELIEVE, MARGIE,  
SWEETHEART, I'M NO-  
BODY'S BABY ETC.

*Music by*  
**SEYMOUR SIMONS**

*I*

  
R.S.



Irving Berlin, Inc.  
MUSIC PUBLISHERS  
1607 Broadway New York

A Quaint Hawaiian Love Song  
**Kicky-Koo - Kicky-Koo**  
**You For Me - Me For You**

Words by  
**JOE YOUNG**  
 and  
**SAM M. LEWIS**

Music by  
**GEORGE W. MEYER**

**CHORUS**

Kick-y - koo - Kick-y - koo - You for me - Me for you - Kick-y - koo -

*P-<sup>mf</sup> sostenuto*

who will do - your woo - - - ing; When I'm gone -

Words by  
**JOE YOUNG**  
 and  
**SAM M. LEWIS**

The Most Beautiful Love Song Ever Written  
**Just A Little Love Song**

Music by  
**JOE COOPER**

**REFRAIN**

*Slam with expression*

Just a lit-tle love song Rings on the

*P-<sup>mf</sup> Melodia sostenuto*

*poco cresc.*

strings of my heart, Must this lit-tle

*R.H.* *poco cresc.*

Optional

Copyright MCMXXII by IRVING BERLIN Inc., 1607 Broadway, New York  
 International Copyright Secured All Rights Reserved

**COPIES FOR SALE WHEREVER MUSIC IS SOLD**

These Numbers can also be had for your Phonograph and Player Piano

# NIGHT

3

Words by  
BENNY DAVIS

Music by  
SEYMOUR SIMONS

Piano introduction in G minor, 4/4 time. The left hand (L.H.) plays a rhythmic accompaniment of eighth notes. The right hand plays chords and a melodic line. The tempo is marked *poco accel.* and *molto rit.*

VOICE

Night - time stars are gleam - ing Night - time starts me dream - ing  
Night - time seems much long - er Love keeps get - ting strong - er

Vocal melody and piano accompaniment for the first line of lyrics. The piano part features chords and a bass line with *ff* dynamics.

Thoughts of the past make me yearn  
I just can't go on this way

Vocal melody and piano accompaniment for the second line of lyrics. The piano part features chords and a bass line.

Tho' we're not to - geth - er I still won - der wheth - er  
Can't you hear me plead - ing your love I am need - ing

Vocal melody and piano accompaniment for the third line of lyrics. The piano part features chords and a bass line with *ff* dynamics.

Arranged by  
Chas. N. Grant

Copyright MCMXXII by IRVING BERLIN, Inc. 1607 B'way, N.Y.

You ev - er think of re - turn - - - ing.  
I won - der why you're de lay - - - ing.

CHORUS (*In sustained and rhythmical manner*)

Night \_\_\_\_\_ when eve - ning shad ows fall Night \_\_\_\_\_

*p* *tranquillo*

— most lone - some time of all; Sweet - - heart how I

*mf*

miss you, Long - - ing so to kiss you;

*f*

I \_\_\_\_\_ don't seem to mind the day, E - - ven tho'you're

far a - way, But when night-time comes I feel so blue

*cresc. e rall.* *dim.*

*cresc. e rall.* *dim.*

*a tempo* *ten.* 1  
Night brings mem-o-ries of you.

*a tempo* *ten.* *a tempo*

you.

*ad lib.*

*accelerando* *rall.* *morendo* *pp*



IRVING BERLIN'S LATEST AND GREATEST SONG

# SOME SUNNY DAY

By IRVING BERLIN

## CHORUS

Some sun-ny day\_ with a smile\_ on my face\_ I'll go back\_ to that place\_ far a -

-way; Back to that shack\_ And that red\_ head-ed hen,\_ She'll say

"How have you be'n" Then go back to the hay and lay\_ me my break-fast.

Copyright MCMXXII. by Irving Berlin Inc. 1607 B'way, N. Y.

International Copyright Secured

All Rights Reserved.

### COPIES ON SALE WHEREVER MUSIC IS SOLD

This Number Can Also Be Had For Your Phonograph or Player Piano