

SIMPATICO

Music by **ARTHUR SCHWARTZ** A.S.C.A.P.

Words by **SAMMY CAHN** A.S.C.A.P.

SCORE

FACE THE MUSIC
I KNOW YOUR MOTHER LOVES YOU
I LIKE TO HIKE
LOVE IS ALL THAT MATTERS
RELAX-AY-VOO
SIMPATICO

From the Paramount Picture

**DEAN
MARTIN
AND
JERRY
LEWIS**

in
**YOU'RE NEVER
TOO YOUNG**

in **VISTAVISION**
and Color by **TECHNICOLOR**

with
NINA FOCH · DIANA LYNN

Produced by Paul Jones · Directed by Norman Taurog
Dances by Nick Castle



LEEDS MUSIC CORPORATION

Artist Copy

SIMPATICO

Key of C (A-D)

Tune Uke

G C E A



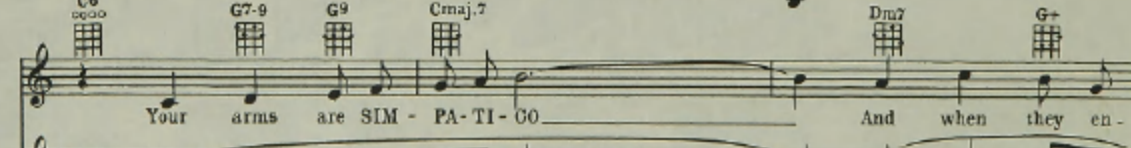
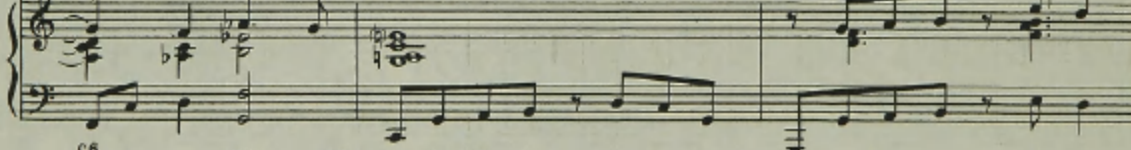
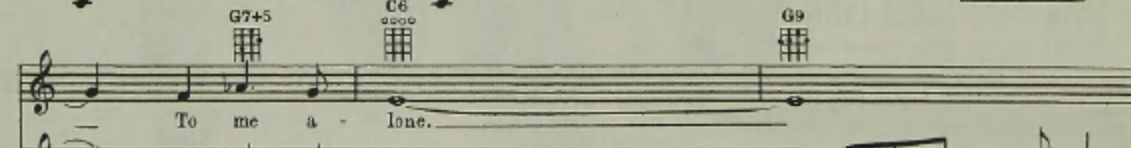
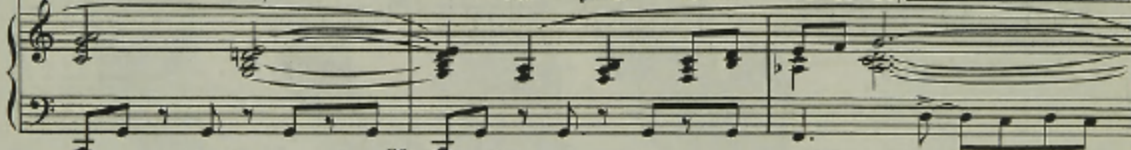
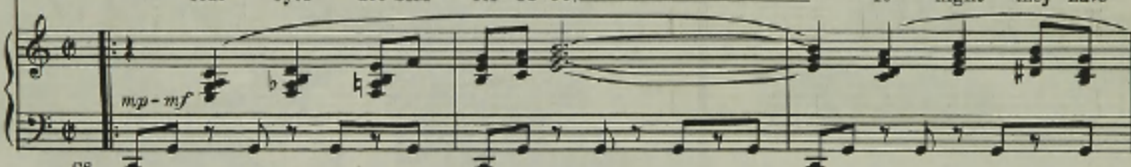
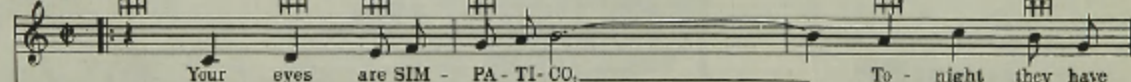
Music by ARTHUR SCHWARTZ

Words by SAMMY CAHN

Moderate beguine tempo (with warm feeling)

Piano

Refrain



* Symbols for Guitar, Diagrams for Ukulele.


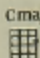
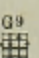
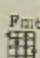
L 1311-3

© - Copyright MCM LV by LEEDS MUSIC CORPORATION, 822 West 48th Street, New York, N.Y.

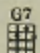
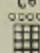
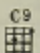
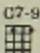
International Copyright Secured

Made in U. S. A.

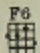
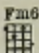
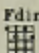
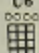
All Rights Reserved

C6  Cmaj.7  G9  Fm6 

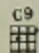
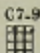
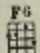

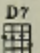
fold me, They hold me with - in a spell,

G7  C6  C9  C7-9 

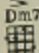
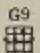
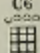
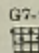
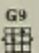
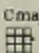
No lov - er has known. When you do the things you

F6  Fm6  Fdim  C6 

do to me, Ev - 'ry thrill I knew is new to me,

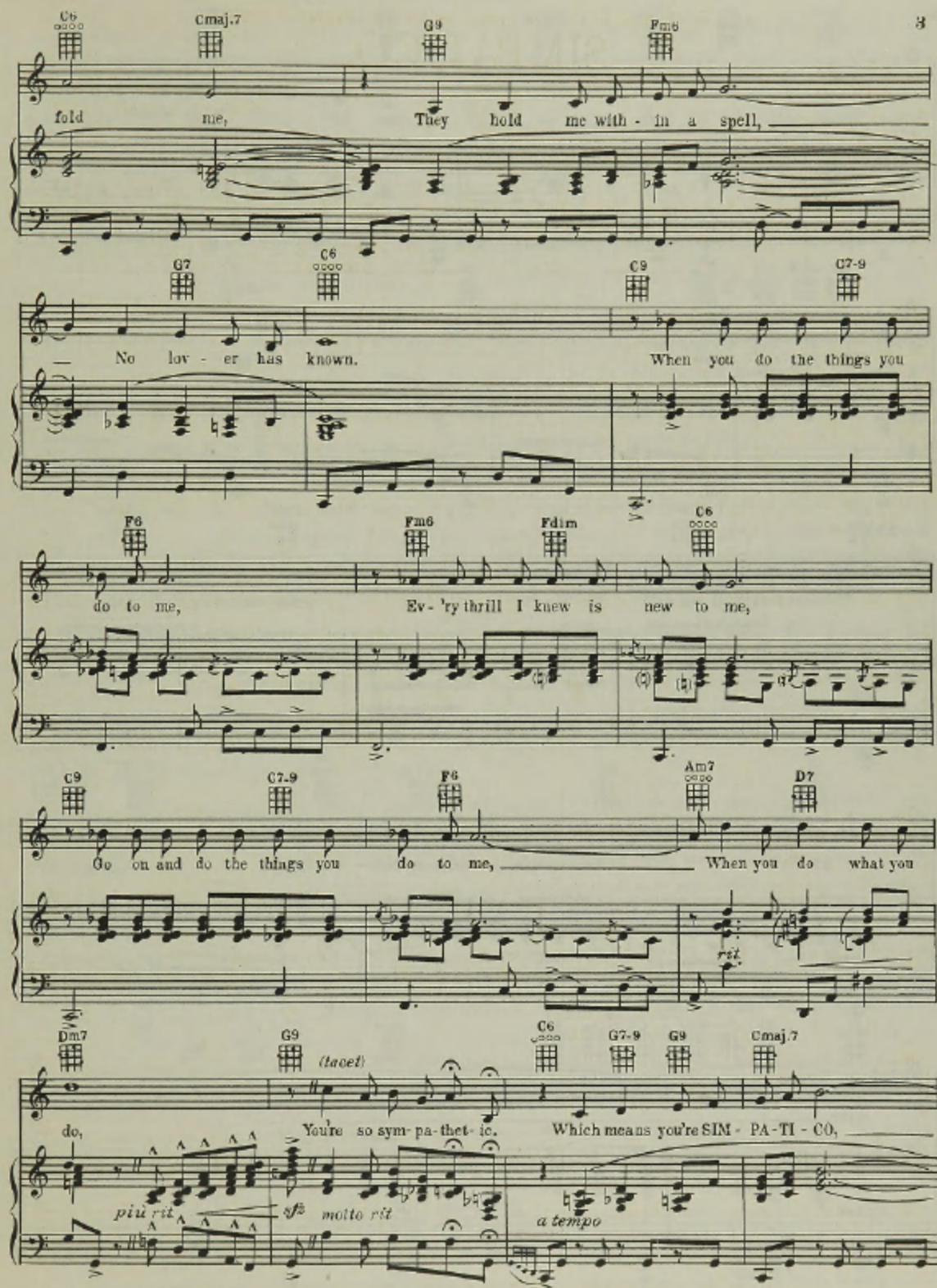
C9  C7-9  F6  Am7  D7 

Go on and do the things you do to me, When you do what you

Dm7  G9  C6  G7-9  G9  Cmaj.7 

do, You're so sym - pa - thet - ic. Which means you're SIM - PA - TI - CO,

piu rit. *fz* *molto rit.* *a tempo*



Which means In lu heav - en And heav - en will be our home,

Chord diagrams: Dm7, G7, C6, Cmaj7, G9, Fm6

When you are mine. mine.

Chord diagrams: G9, G7-9, G7, C6, G9, C6

Coda Prom-ise that you'll stay SIM - PA-TI - CO, Come what may you'll stay SIM -

Chord diagrams: C9, C7-9, F6, Fm6, Fdim

PA - TI - CO, The way that I will stay SIM - PA - TI - CO, When you are

Chord diagrams: C6, C9, C7-9, Fm6, G7(9), G7-9 D7

Performance markings: *rall*, *f rit*

mine.

Chord diagrams: C, Bb, Ab, Fm6, C, Dm, Em, Dm7, G9, C

Performance markings: *agitato*, *rit*