

THE MAN THAT GOT AWAY

SAMPLE COPY

MUSIC BY HAROLD ARLEN LYRICS BY IRA GERSHWIN

M9355
1082

JUDY
GARLAND

JAMES
MASON

"A Star
is Born"

PRESENTED BY WARNER BROS. IN

CINEMASCOPE

COLOR BY TECHNICOLOR



Songs

THE MAN THAT GOT AWAY
IT'S A NEW WORLD
SOMEONE AT LAST
LOSE THAT LONG FACE
HERE'S WHAT I'M HERE FOR
GOTTA HAVE ME GO
WITH YOU

PRICE
50c
IN U.S.A.

HARWIN MUSIC CORP.,

Sole Selling Agents EDWIN H. MORRIS & COMPANY, INC. 35 WEST 51st STREET, NEW YORK 19, N. Y.

As sung by Judy Garland in her new starring picture "A STAR IS BORN"

The Man That Got Away

Tune Ukulele **A D F# B**

Lyric by
IRA GERSHWIN

Music by
HAROLD ARLEN



Slowly - with a steady insistence

Musical notation for the first system, including treble and bass staves with chords and dynamics.

F6 *Slowly but insistently*

The night is bit - ter, The stars have lost their glit - ter, The

winds grow cold - er And sud - den - ly you're old - er. And all be-cause of the

man that got a - way, No more his eag - er call;

Copyright 1954 by HARWIN MUSIC CORP.

Sole Selling Agent- EDWIN H. MORRIS & COMPANY, Inc., 35 West 51st Street, N.Y. 19, N.Y.

International Copyright Secured

All Rights Reserved Including Public Performance for Profit

Made in U.S.A.

C7 F9 A dim Gm7

The writ - ing's on the wall, — The dreams you dream'd have all —

C7 F C7 F6

— Gone a - stray. — The man that won you Has

Gm7 Eb C7

run off and un - done you. That great be - gin - ning Has

Bb9 Fm7 C7 F Gm F Red. Gm Am Bb

seen the fi - nal in - ning, Don't know what hap - pened, It's all a cra - zy

Am7 D7 Dm7 D7 Gm7 C9 C aug

game! — No more that all - time thrill, — For

F D7+5 A dim Gm7 Bbm6

you've been through the mill, And nev - er a new love will Be the

F7 F aug F D7b9

same. Good rid-dance! Good - bye! Ev-'ry trick of his you're

easy rhythm

G9 Em Ab C7 F Gm F D dim Abm6

on to; But, fools will be fools, And where's he gone

C9 F6

to? The road gets rough - er, It's lone - li - er and tough - er, With

Gm7 Eb C7 Bb9 Fm7 C7 F Gm F

hope you burn up, To - mor - row he may turn up. There's just no let - up The

simile

Gm Am A7+ Am7 D7 Dm7 D7 Bb6

live - long night and day! Ev - er since this world be - gan

B dim F D7+5 D9

There is noth - ing sad - der than A

Gm7 Bbm 1 F

one man wo - man look - ing for The man that got a - way.

C7 2 F Cm7 Optional F

The way The man that

C7 F C7 F

got a - way.



SONGS FROM
"A Star is Born"

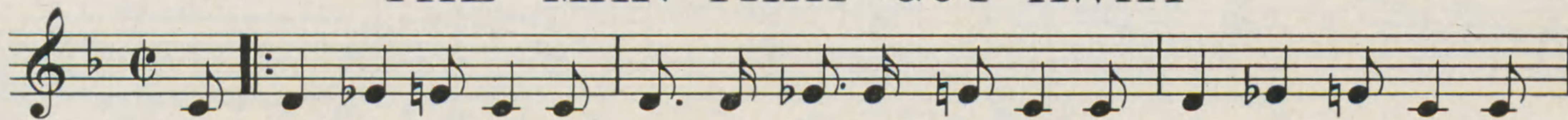
STARRING
JUDY GARLAND
JAMES MASON



MUSIC BY **HAROLD ARLEN**

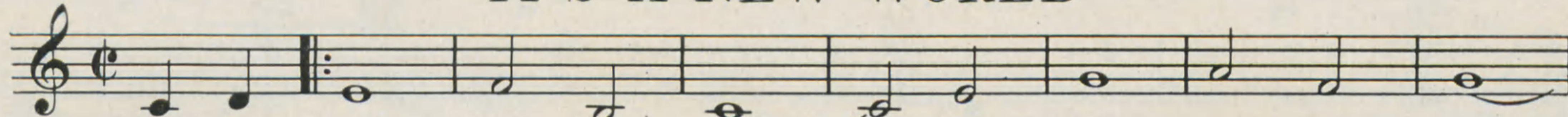
LYRICS BY **IRA GERSHWIN**

THE MAN THAT GOT AWAY



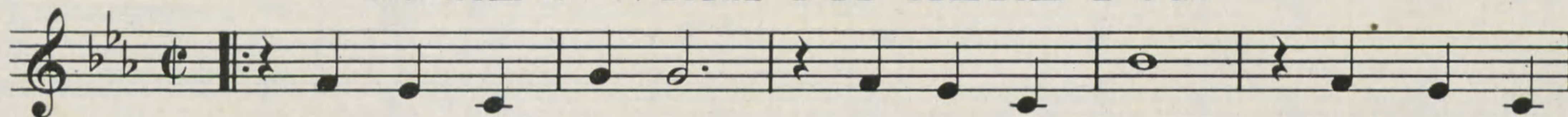
The night is bit-ter, The stars have lost their glit-ter, The winds grow cold-er And

IT'S A NEW WORLD



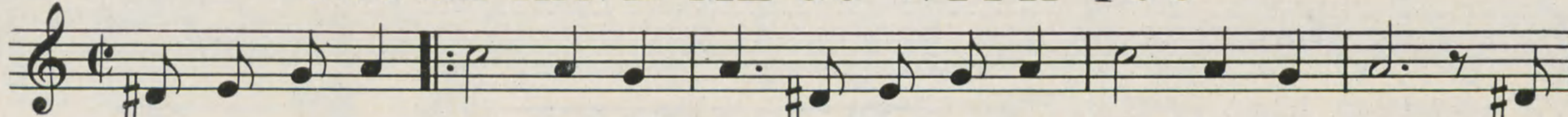
It's a new world I see — A new world for me; —

HERE'S WHAT I'M HERE FOR



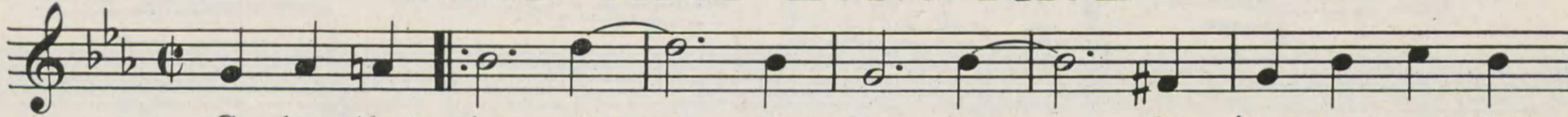
What am I here for? It's time you knew. Here's what I'm

GOTTA HAVE ME GO WITH YOU



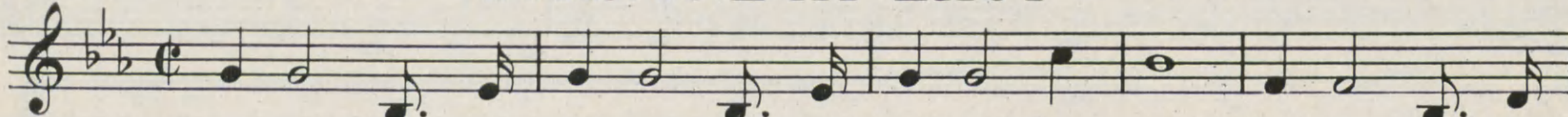
You wan-na have bells that'll ring, You wan-na have songs that -'ll sing You

LOSE THAT LONG FACE



Go lose that long face, — that long face — Go 'long and get that

SOMEONE AT LAST



Some-where there's a some-one who's the some-one for me Some-day there will

Copyright 1954 by HARWIN MUSIC CORP.,

Sole Selling Agent

EDWIN H. MORRIS & COMPANY, INC. 35 WEST 51st STREET, NEW YORK 19, N. Y.