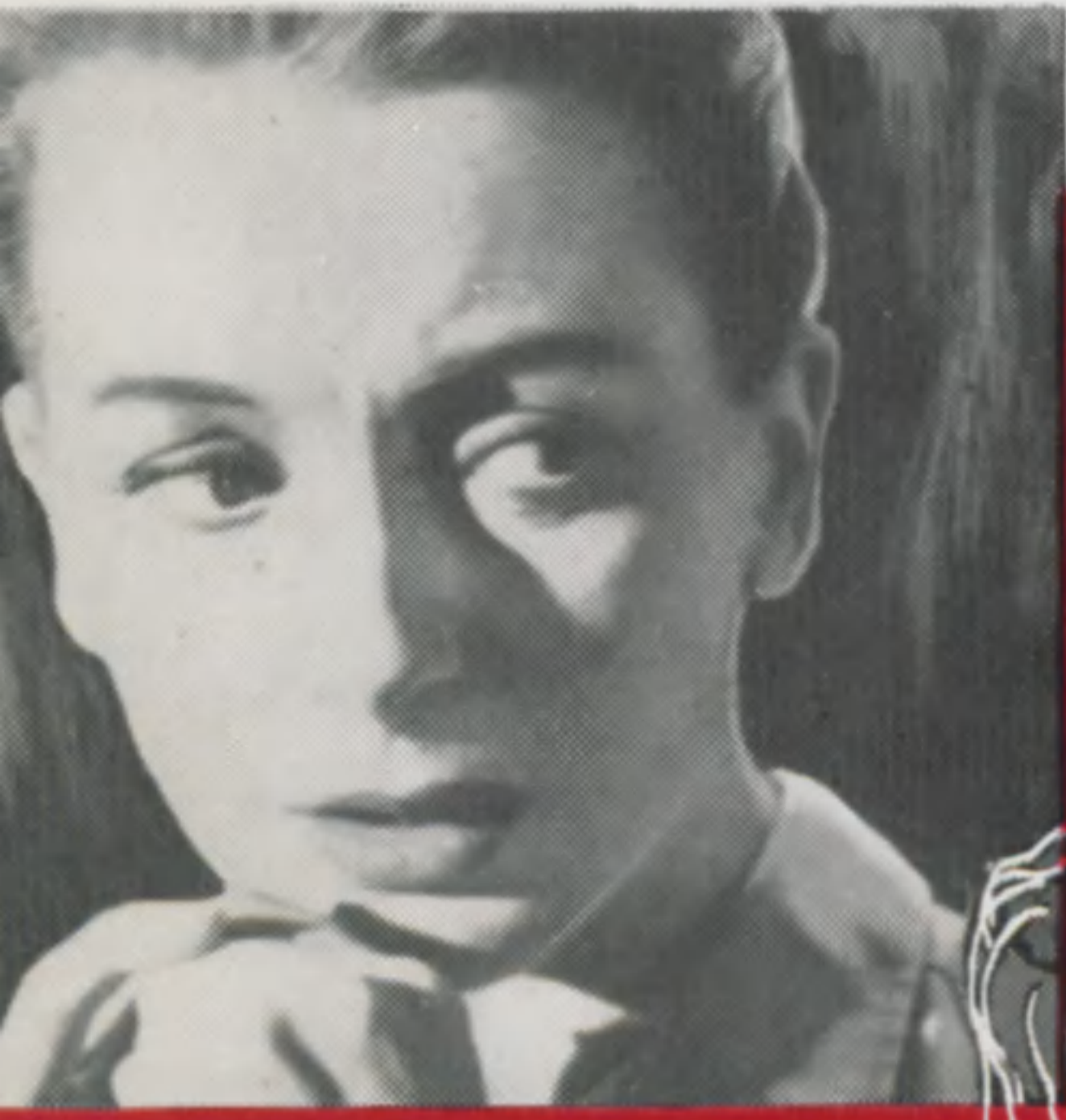


SEPARATE TABLES

M19355
458
C.2.

Lyrics by HAROLD ADAMSON

Music by HARRY WARREN



HECHT, HILL
AND LANCASTER
PRESENT


RITA HAYWORTH
DEBORAH KERR
DAVID NIVEN
WENDY HILLER
AND
BURT LANCASTER

SEPARATE TABLES

with GLADYS COOPER • CATHLEEN NESBITT • FELIX AYLMER • ROD TAYLOR • AUDREY DALTON

Screenplay by **TERENCE RATTIGAN** and **JOHN GAY** BASED ON A PLAY BY TERENCE RATTIGAN

Directed by **DELBERT MANN** • Produced by **HAROLD HECHT** • MUSIC BY DAVID RAKSIN

A CLIFTON PRODUCTIONS, INC. PICTURE • Released thru UNITED  ARTISTS

*THE INTERNATIONAL
STAGE SUCCESS SEEN BY
MORE THAN 42 MILLION
PEOPLE IN 145 CITIES
ALL OVER THE WORLD!*

HECHT-LANCASTER & BUZZELL, INC.

Sole Selling Agents:

KEYS-HANSEN, INC.

119 West 57th Street

New York 19, N.Y.



SEPARATE TABLES

Lyric by
HAROLD ADAMSON



Music by
HARRY WARREN

Moderately

mf

rall.

The piano introduction consists of two staves. The right hand plays a series of chords and single notes, while the left hand provides a steady bass line. The tempo is marked 'Moderately' and the dynamics range from mezzo-forte (mf) to a slight 'rallentando' (rall.) towards the end.

E \flat Fm7 B \flat 7 E \flat Cm Cm7 Fm7

SEP-'RATE TA-BLES, Two lone-ly peo-ple sit at SEP - 'RATE

a tempo
p - mf

The first system of the song features a vocal line and piano accompaniment. The vocal line starts with a repeat sign. The piano accompaniment includes a 'piano' (p) section and a 'mezzo-forte' (mf) section. The lyrics are: 'SEP-'RATE TA-BLES, Two lone-ly peo-ple sit at SEP - 'RATE'.

B \flat 7 Cm Gm A \flat maj. 7 Fm6 Gm7 E \flat

TA-BLES, They sit a - cross the room, So near and yet so far, How

The second system continues the vocal line and piano accompaniment. The lyrics are: 'TA-BLES, They sit a - cross the room, So near and yet so far, How'.

Fm7 B \flat 7 E \flat maj. 7 Cm G7 Cm Cm(+7) Cm7 F7 Fm

cas-u - al they are, Still I can see he wants her so, But he's a-fraid to

The third system concludes the vocal line and piano accompaniment. The lyrics are: 'cas-u - al they are, Still I can see he wants her so, But he's a-fraid to'.

$B\flat 7-9 +5$ $E\flat$ $Fm7$ $B\flat 7$ $E\flat$ Cm $Cm7$ $Fm7$

let her know. SEP-RATE TA-BLES, They were-n't meant to be at SEP - 'RATE

rall. *a tempo*

$B\flat 7$ Cm Gm $A\flat$ $B\flat 7$ $Gm7$ $E\flat$

TA-BLES, And yet if he loves her as much as I love you, I'm

Fm $G+7$ $G7$ $C7-9$ $F9$ $Fm7$ $B\flat 9$ $E\flat$ $Gm7$ $Cm7$ $Fm7$ $B\flat 9$

sure of what they'll do, They'll find a SEP-RATE TA-BLE just for two.

rall. *a tempo*

1.

$E\flat$ $Gm7$ $A\flat maj.7$ $A\flat$ $Fm7$ $F9$ $Fm7$ $B\flat 9$ $E\flat$ $C\flat$ $E\flat$

two, just for two, They'll find a SEP-RATE TA-BLE just for two.

a tempo *rall.*

2.

