

# NOT AS A STRANGER

M19355  
400

Lyrics by BUDDY KAYE

Music by JAMES VAN HEUSEN



Stanley Kramer presents

## "NOT AS A STRANGER"

starring

Olivia DeHavilland

Robert Mitchum

Frank Sinatra

Gloria Grahame

Broderick Crawford

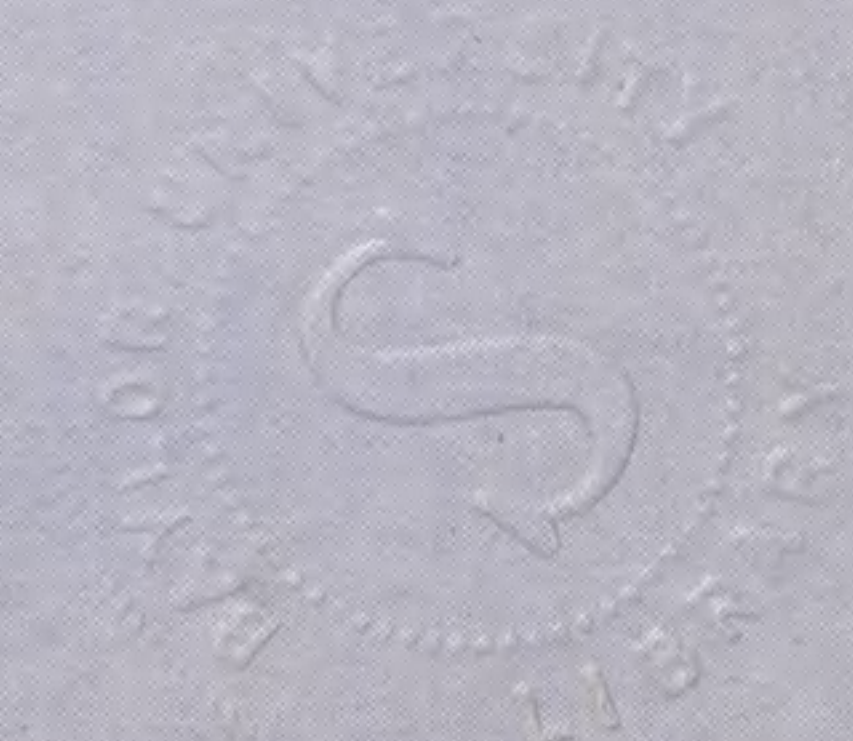
Charles Bickford

Based on the Novel by Morton Thompson

Released thru United Artists



MARAVILLE MUSIC CORP.  
Sole Selling Agent  
BARTON MUSIC CORP.  
1619 Broadway, New York, N. Y.



# Not As A Stranger

Lyric by  
BUDDY KAYE

Tune Uke  
G C E A

Music by  
JAMES VAN HEUSEN



Broadly

Refrain

\*Em F Em7 Dm7 Em Am6 Em B7 Em

I think of you, my love, — NOT AS A STRAN-GER, Al - tho' it's

*a tempo* *mp - mf*

Dm7 G7-9 C C6 D7

true, my love, — We've on - ly met; — Yet I know your

G7 C6 Cm6 G Am7 Am6 Am7 D7

smile and I know your sigh, Know them well from dreams I can't for-

\*Symbols for Guitar, Diagrams for Ukulele.

Copyright 1955 by MARAVILLE MUSIC CORP.

Sole Selling Agent: BARTON MUSIC CORP., 1619 Broadway, New York 19, N.Y.

International Copyright Secured

Made in U. S. A.

All Rights Reserved

Dm7 G6 G7 Em F Em Dm7  
 get. We've kissed like this be - fore, You're not a

Em Am6 Em B7 Em Dm7 G7-9  
 stran - ger, A thou - sand times or more, 'Neath stars a -

C C6 D7 G7  
 bove; Now the path is clear, For at

C6 Cmaj.7 D#dim Dm7 G9 G7-9  
 last you're here, NOT AS A STRAN-GER, dear, But my own true

*poco rit*

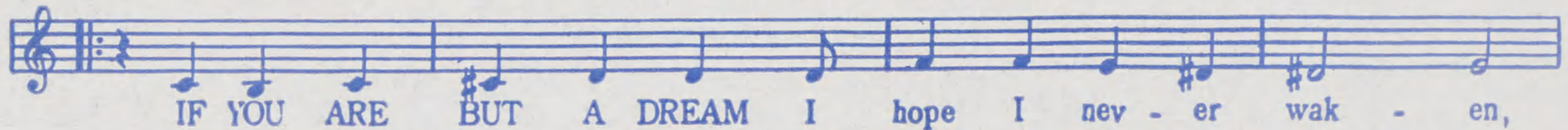
C C#dim G7 Em F Em7 G7 G7+5 C6  
 love. I think of But my own true love.

*mf a tempo*

# Barton ALL TIME FAVORITES

## IF YOU ARE BUT A DREAM

(Adapted from Rubinstein's Romance)  
By Moe Jaffe, Jack Fulton and Nat Bonx



Copyright 1941 by Barton Music Corp. 1619 Broadway, N. Y. C.

## FULL MOON AND EMPTY ARMS

(Based on Rachmaninoff's Piano Concerto No. 2)  
By Buddy Kaye and Ted Mossman



Copyright 1946 by Barton Music Corp., 1619 Broadway, New York, N.Y.

## DAY BY DAY

By Sammy Cahn, Axel Stordahl and Paul Weston



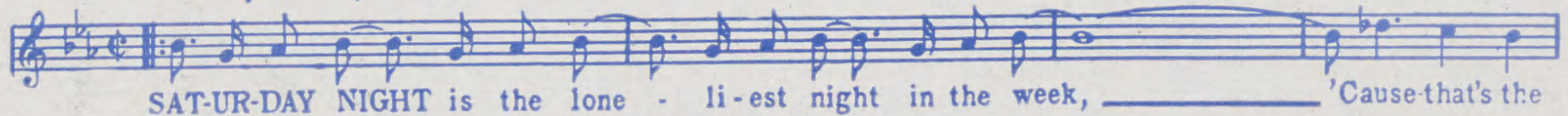
Copyright 1945 by Barton Music Corp 1619 Broadway, New York, N.Y.

## SATURDAY NIGHT

(Is The Loneliest Night In The Week)

Words by Sammy Cahn

Music by Jule Styne

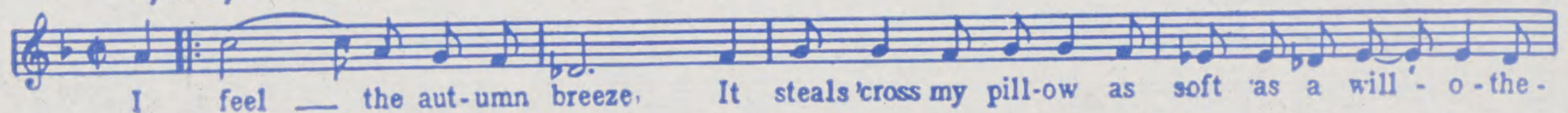


Copyright 1944 by Barton Music Corp. 1619 Broadway, N. Y. C.

## THERE'S NO YOU

Lyric by Tom Adair

Music by Hal Hopper

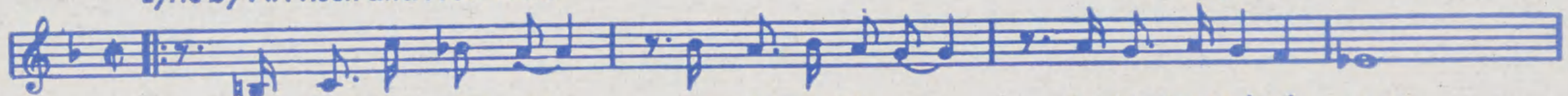


Copyright 1944 by Barton Music Corp. 1619 Broadway, New York

## ROSES IN THE RAIN

Lyric by Al Frisch and Fred Wise

Music by Frankie Carle



Copyright 1947 by Barton Music Corp., 1619 Broadway, New York, N.Y.

**BARTON MUSIC CORP.**

1619 BROADWAY • NEW YORK, N. Y.