

D7636
1860

LIDA ROSE

By MEREDITH WILLSON

KERMIT BLOOMGARDEN
WITH HERBERT GREENE
IN ASSOCIATION WITH FRANK PRODUCTIONS INC.
Presents

THE MUSIC MAN

A New Musical Comedy

STARRING

ROBERT PRESTON

BOOK, MUSIC & LYRICS BY

MEREDITH WILLSON

STORY BY MEREDITH WILLSON & FRANKLIN LACEY

WITH

BARBARA COOK · DAVID BURNS · PERT KELTON

IGGIE WOLFINGTON · THE BUFFALO BILLS · HELEN RAYMOND · PAUL REED · EDDIE HODGES

CHOREOGRAPHY BY ONNA WHITE SETTINGS & LIGHTING BY HOWARD BAY COSTUMES BY RAOUL PENE DU BOIS

ORCHESTRATIONS BY DON WALKER DANCE ARR. BY LAURENCE ROSENTHAL PRODUCTION ASSOCIATE SYLVIA DRULIE

MUSICAL DIRECTION AND VOCAL ARR. BY HERBERT GREENE

ENTIRE PRODUCTION
STAGED BY

MORTON DA COSTA

FRANK MUSIC CORP.

Sole Selling Agents: FRANK DISTRIBUTING CORP. • 119 West 57th Street • New York 19, N.Y.



Lida Rose

From the Musical Comedy "The Music Man"

By
MEREDITH WILLSON

Moderate Bounce

Piano

The piano introduction consists of two staves in 4/4 time. The right hand starts with a melody of eighth notes, and the left hand provides a steady bass line. Dynamics include *mf* and *p*.

Voice

Li - da Rose, I'm home a - gain Rose, - to get the sun back in my

Obligato

Ooh

The vocal line is in E-flat major. The piano accompaniment includes a *mf* dynamic and a 7th chord. Chord symbols above the staff include Eb, Edim, and Bb7.

sky. Li - da Rose, I'm home a - gain Rose - a - bout a

Ooh

The vocal line continues with a melodic phrase. The piano accompaniment features a *p* dynamic and a 7th chord. A D chord symbol is present above the staff.

Ab Eb D Eb +5 Ab

thou - sand kiss - es shy. Ding, dong, ding! I can

Ooh

mf

Eb C7+5 F7

hear the cha - pel bell chime. Ding, dong, ding! At the

Ooh

Bb7 Ab Bb7 C7 Fm7 Bb7 Eb

least sug - ges - tion I'll pop the ques - tion. Li - da Rose, I'm

Ooh

Edim Bb7

home a - gain Rose - with - out a sweet-heart to my name.

Ooh

This system contains the first two lines of music. The top line is the vocal melody, starting with a treble clef and a key signature of two flats. It features a melodic line with a slur over the first four notes. The lyrics "home a - gain Rose - with - out a sweet-heart to my name." are written below the notes. Above the first two measures are the chord symbols "Edim" and "Bb7". Below the first measure is the vocalization "# Ooh". The piano accompaniment consists of two staves: the right hand has a treble clef and plays chords and moving lines, while the left hand has a bass clef and plays a steady bass line. The system ends with a double bar line.

D Ab Eb D Eb Gm7-5

Li - da Rose, now ev - 'ry - one knows that I am hop - ing you're the same. -

Ooh

mf

This system contains the second two lines of music. The top line is the vocal melody, continuing from the previous system. It features a melodic line with a slur over the first four notes. The lyrics "Li - da Rose, now ev - 'ry - one knows that I am hop - ing you're the same. -" are written below the notes. Above the first two measures are the chord symbols "D", "Ab", "Eb", "D", "Eb", and "Gm7-5". Below the first measure is the vocalization "Ooh". The piano accompaniment consists of two staves: the right hand has a treble clef and plays chords and moving lines, while the left hand has a bass clef and plays a steady bass line. The system ends with a double bar line. A dynamic marking "*mf*" is placed below the piano accompaniment.

C7+5 C7 Ab Abm6 Eb

So here is my love song, Not fan - cy or

Ooh

This system contains the third two lines of music. The top line is the vocal melody, continuing from the previous system. It features a melodic line with a slur over the first four notes. The lyrics "So here is my love song, Not fan - cy or" are written below the notes. Above the first two measures are the chord symbols "C7+5", "C7", "Ab", "Abm6", and "Eb". Below the first measure is the vocalization "Ooh". The piano accompaniment consists of two staves: the right hand has a treble clef and plays chords and moving lines, while the left hand has a bass clef and plays a steady bass line. The system ends with a double bar line.

C7 Fm7 Bb7 Ab Bb7 1. Eb

fine, Li - da Rose, Oh won't you be mine! _____

Ooh _____ Li - da Rose, Oh

mf *p* *mf*

Ab Eb Ab Eb

Li - da Rose _____ Li - da Rose, Oh Li - da Rose, _____

2. Eb Ab Eb

mine! _____

Repeat ad lib. and fade

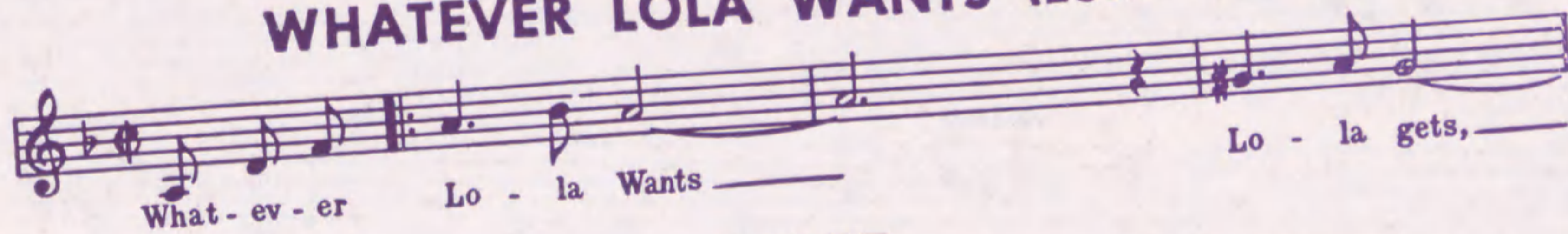
Li - da Rose, Oh Li - da Rose, _____ Li - da Rose, Oh Li - da Rose. _____

mf *dim.*

Songs From the Broadway Musical
Damn Yankees

Words and Music by
RICHARD ADLER and JERRY ROSS

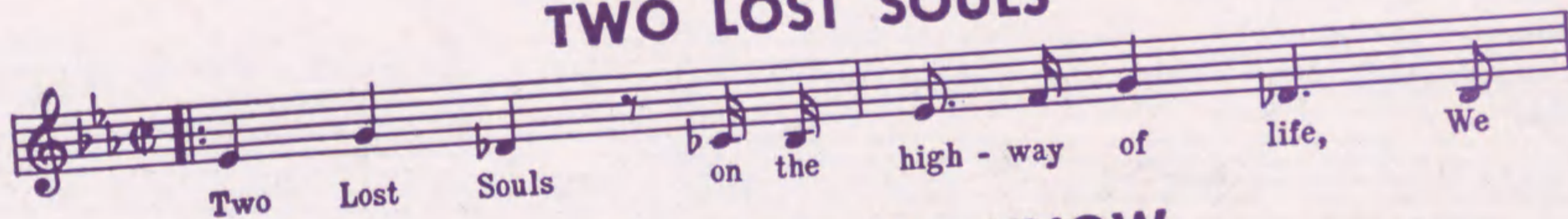
WHATEVER LOLA WANTS (Lola Gets)



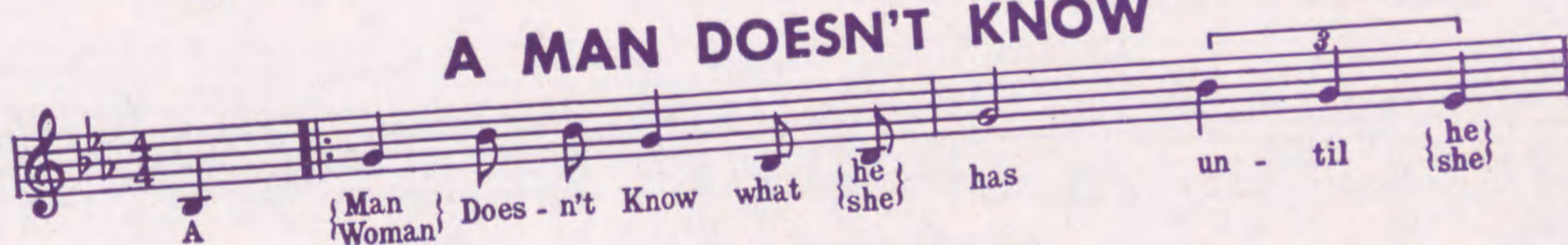
HEART



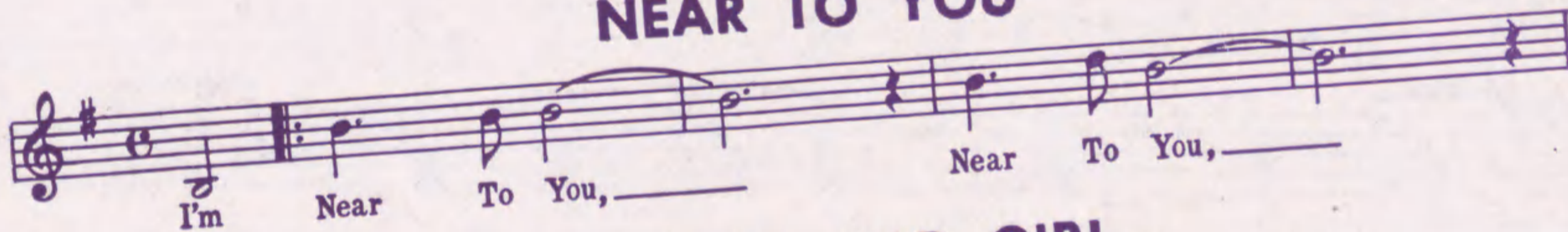
TWO LOST SOULS



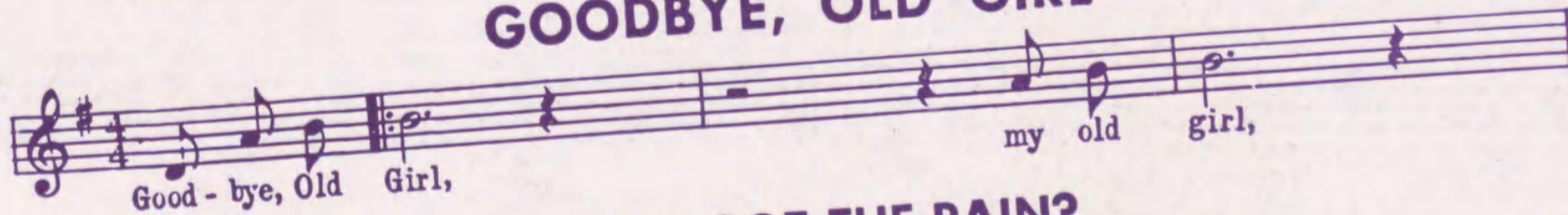
A MAN DOESN'T KNOW



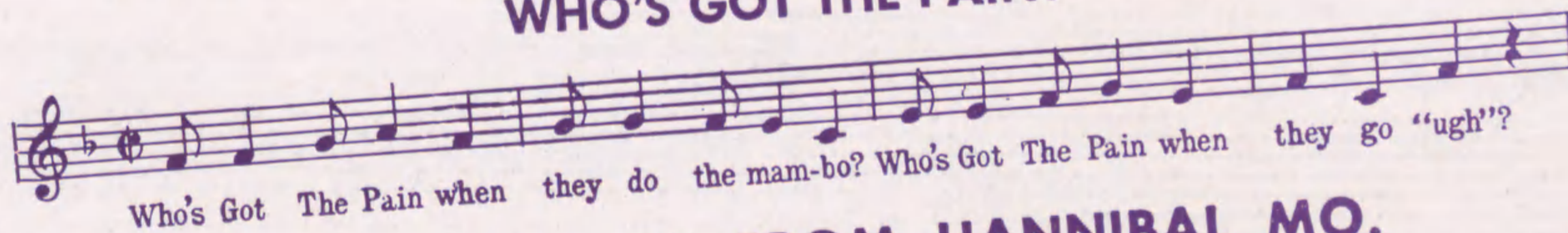
NEAR TO YOU



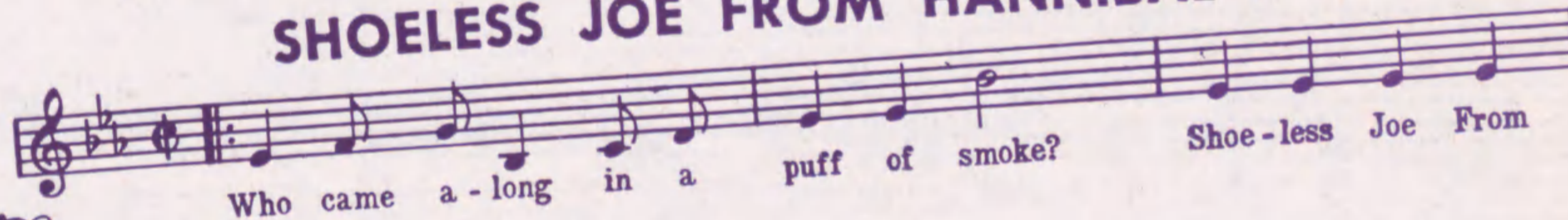
GOODBYE, OLD GIRL



WHO'S GOT THE PAIN?



SHOELESS JOE FROM HANNIBAL MO.



Copyright 1955 by

FRANK MUSIC CORP.

Sole Selling Agents:

FRANK DISTRIBUTING CORP.

119 W. 57th St. • New York 19, N.Y.