

M9355
1081

IT'S A NEW WORLD

MUSIC BY HAROLD ARLEN LYRICS BY IRA GERSHWIN

SAMPLE COPY



JUDY GARLAND

JAMES MASON

"A Star is Born"

PRESENTED BY WARNER BROS. IN
CINEMASCOPE
COLOR BY **TECHNICOLOR**



Songs

THE MAN THAT GOT AWAY
IT'S A NEW WORLD
SOMEONE AT LAST
LOSE THAT LONG FACE
HERE'S WHAT I'M HERE FOR
GOTTA HAVE ME GO
WITH YOU

PRICE
50c
IN U.S.A.

It's A New World

Lyric by
IRA GERSHWIN

Tune Ukulele **A D F# B**

Music by
HAROLD ARLEN

Slowly

mp

The piano introduction consists of two systems of music. The first system has four measures, and the second system has four measures. The music is written for piano with a tempo marking of 'Slowly' and a dynamic marking of 'mp'. The melody is in the right hand, and the accompaniment is in the left hand. The key signature has one sharp (F#), and the time signature is 4/4.

Verse with warmth and grandeur

mp

C F C7 G Dm7 G7

How won-der-ful that I'm be-hold-ing A Nev-er-Nev-er Land un-

The first system of the verse includes a vocal line and a piano accompaniment. The piano part has a dynamic marking of 'mp'. Chord symbols are placed above the piano staff. The lyrics are: "How won-der-ful that I'm be-hold-ing A Nev-er-Nev-er Land un-".

C F F# dim C G# dim Am Fm

fold-ing: Where we pol-ish up the stars And moun-tains we move In a

The second system continues the vocal and piano accompaniment. The piano part has a dynamic marking of 'mp'. Chord symbols are placed above the piano staff. The lyrics are: "fold-ing: Where we pol-ish up the stars And moun-tains we move In a".

C G Am Em Dm7 G9 C Dm

life where all the pleas-ures we will prove.

The third system concludes the vocal and piano accompaniment. The piano part has a dynamic marking of 'mp'. Chord symbols are placed above the piano staff. The lyrics are: "life where all the pleas-ures we will prove."

Copyright 1954 by HARWIN MUSIC CORP.

Sole Selling Agent- EDWIN H. MORRIS & COMPANY, Inc., 35 West 51st Street, N.Y. 19, N.Y.

International Copyright Secured

All Rights Reserved Including Public Performance for Profit

Made in U.S.A.

Refrain with warmth and grandeur

It's a new world I see

mf *L.H.*

Detailed description: This system contains the first two lines of music. The top line is a vocal melody in treble clef with lyrics 'It's a new world I see'. The piano accompaniment is in grand staff (treble and bass clefs). The piano part features a melodic line in the right hand and a bass line in the left hand. Chord diagrams for C, Dm7, G9, and C are shown above the vocal line. The piano part includes a dynamic marking of *mf* and a 'L.H.' marking above the right-hand staff.

A new world for me!

Detailed description: This system contains the third and fourth lines of music. The vocal line continues with the lyrics 'A new world for me!'. The piano accompaniment continues with similar melodic and harmonic patterns. Chord diagrams for Dm7, Em7, C, Am, Dm, and C are shown above the vocal line.

The tears have rolled off my cheek

Detailed description: This system contains the fifth and sixth lines of music. The vocal line has a triplet of eighth notes under the word 'rolled'. The piano accompaniment also features a triplet in the right hand. Chord diagrams for Em and Dm are shown above the vocal line.

And fears fade a - way ev - 'ry time you speak.

poco rit.

Detailed description: This system contains the seventh and eighth lines of music. The vocal line has a triplet of eighth notes under the word 'fade'. The piano accompaniment includes a triplet in the right hand and a 'poco rit.' marking. Chord diagrams for F, Em, F9, and Dm7 are shown above the vocal line.

a tempo

Am7 Am6 D7+5

A new world though we're in a ti - ny room,

a tempo

G9 Am Ab9 Dm7 Am Dm7

What a vi - sion of joy and blos - som and

Bb9 Dm7 Db7 C9 Db9 C9

bloom! A new - found prom - ise,

marked - with gradual cresc

Gb7 F9 Eb9 Eb9+5

one that will last, So I'm hold - ing on and

hold back

Ab9

D9

Dm7
rit.

C *a tempo*

I'm hold - ing fast! You brought a new

hold back

rit.

a tempo

world to me, And

Dm7

G9

C

that it - 'll al - ways, al - ways be!

F

Dm7

1 F

It's a be!

C

Dm7

2 C

F

C

It's a be!

musical accompaniment for the final phrase



SONGS FROM
"A Star is Born"

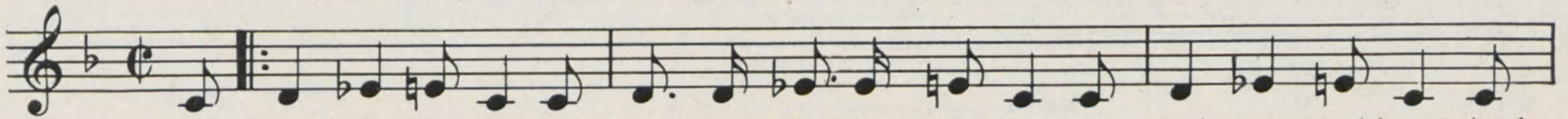
STARRING
JUDY GARLAND
JAMES MASON



MUSIC BY **HAROLD ARLEN**

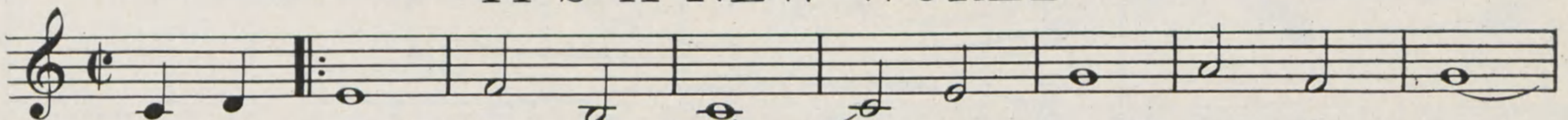
LYRICS BY **IRA GERSHWIN**

THE MAN THAT GOT AWAY



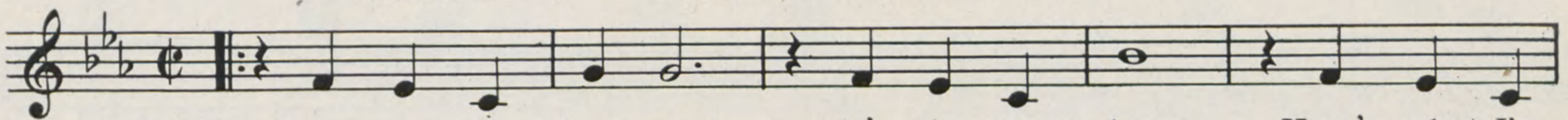
The night is bit-ter, The stars have lost their glit-ter, The winds grow cold-er And

IT'S A NEW WORLD



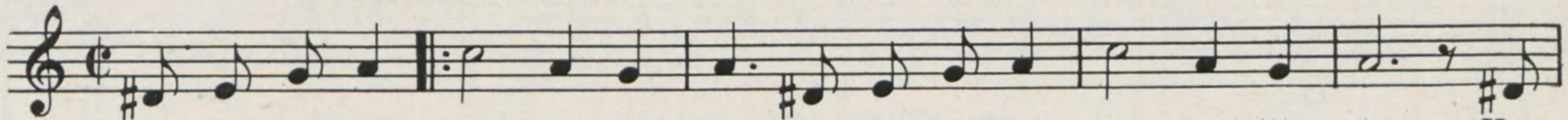
It's a new world I see — A new world for me; —

HERE'S WHAT I'M HERE FOR



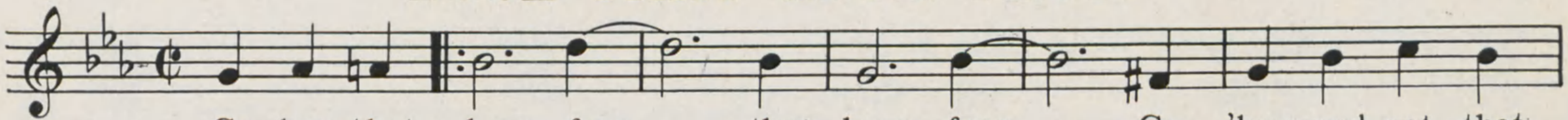
What am I here for? It's time you knew. Here's what I'm

GOTTA HAVE ME GO WITH YOU



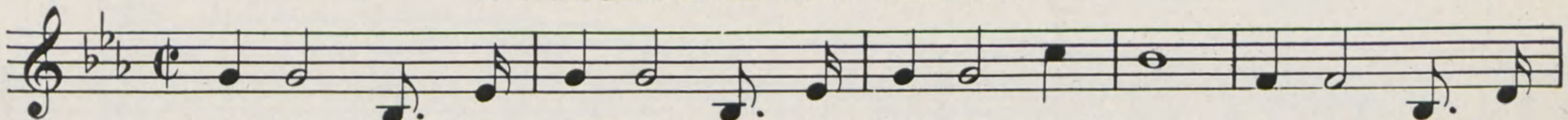
You wan-na have bells that'll ring, You wan-na have songs that -'ll sing You

LOSE THAT LONG FACE



Go lose that long face, — that long face — Go 'long and get that

SOMEONE AT LAST



Some-where there's a some-one who's the some-one for me Some-day there will

Copyright 1954 by **HARWIN MUSIC CORP.**,

Sole Selling Agent

EDWIN H. MORRIS & COMPANY, INC. 35 WEST 51st STREET, NEW YORK 19, N. Y.