

SUE ME

L826
33

by FRANK LOESSER



FEUER AND MARTIN present

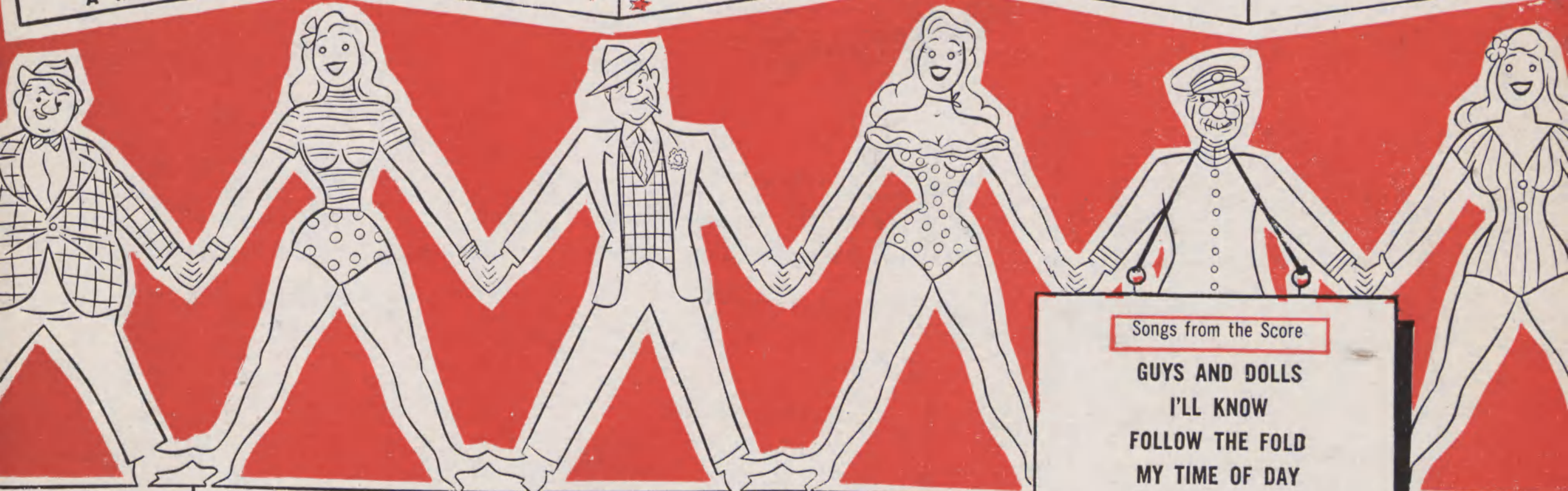
GUYS & Dolls

A MUSICAL FABLE OF BROADWAY

Based on a story
and characters by
DAMON RUNYON

Music and Lyrics by
FRANK LOESSER

Staged by
GEORGE S. KAUFMAN



Book by

JO SWERLING and ABE BURROWS

Dances and musical
numbers staged by
MICHAEL KIDD

Settings and
lighting by
JO MIELZINER

Costumes by
ALVIN COLT

Songs from the Score

GUYS AND DOLLS
I'LL KNOW
FOLLOW THE FOLD
MY TIME OF DAY
FUGUE FOR TINHORNS
TRAVELING LIGHT
LUCK BE A LADY
MORE I CANNOT WISH YOU
A BUSHEL AND A PECK
IF I WERE A BELL
I'VE NEVER BEEN IN LOVE BEFORE
SUE ME
SIT DOWN YOU'RE ROCKIN' THE BOAT
SHANGO
IT FEELS LIKE FOREVER



Musical Director
IRVING ACTMAN

Orchestral
Arrangements by
GEORGE BASSMAN

Vocal Arrangements
and Direction by
HERBERT GREENE

SUSAN PUBLICATIONS, INC.
EDWIN H. MORRIS AND COMPANY, INC.
Sole Selling Agents

1619 BROADWAY • NEW YORK 19, N. Y.

SUE ME

From the Broadway Production "GUYS and DOLLS"

TUNE UKULELE A D F# B

By FRANK LOESSER

Helplessly

ad lib. **G** **D7b9** **G** **D7+b9**

So you're all the time right and I'm all the time wrong, So

mp
con la voce

G **D7+** **Gmaj7** **D7+** **Gmaj7** **B** **Em**

my char-ac-ter's weak and your char-ac-ter's strong So your brow is so high and

Bm **Ddim** **Am** **Cm6** **G** **G+** **Em** **E7** **Em7** **A7** **D** **D7**

my brow is so low so "brow-shmow" I'm close to you now and all I can tell you is oh, go

rit.



Copyright 1950 by Frank Loesser
 Rights throughout the world controlled by Susan Publications, Inc.
 Sole Selling Agent: EDWIN H. MORRIS & COMPANY, Inc., 1619 Broadway, New York 19, N.Y.
 International Copyright Secured
 Engraved & Printed in U. S. A.
 All Rights Reserved Including Public Performance For Profit

Chorus Cmaj7 Bm7 Am7 Gmaj7 Am E+ Am7

a tempo

Sue me, sue me, what can you do me? I love you _____ give a hol-ler and

a tempo
mp-mf

D7 Am7 D D7 Gmaj7 G6 G

hate me, hate me, go a-head hate me I love you. _____ All

G7 C Cm6 Gmaj7 A7 D7+

right al-rea-dy, I'm just a no-good-nik All right al-rea-dy, it's true, so Nu? So
I'm strict-ly a go-nif

Cmaj7 Bm7 Am7 E9 A9 D7b5 1. G Em7 Am7 D7+ 2. G F9 G

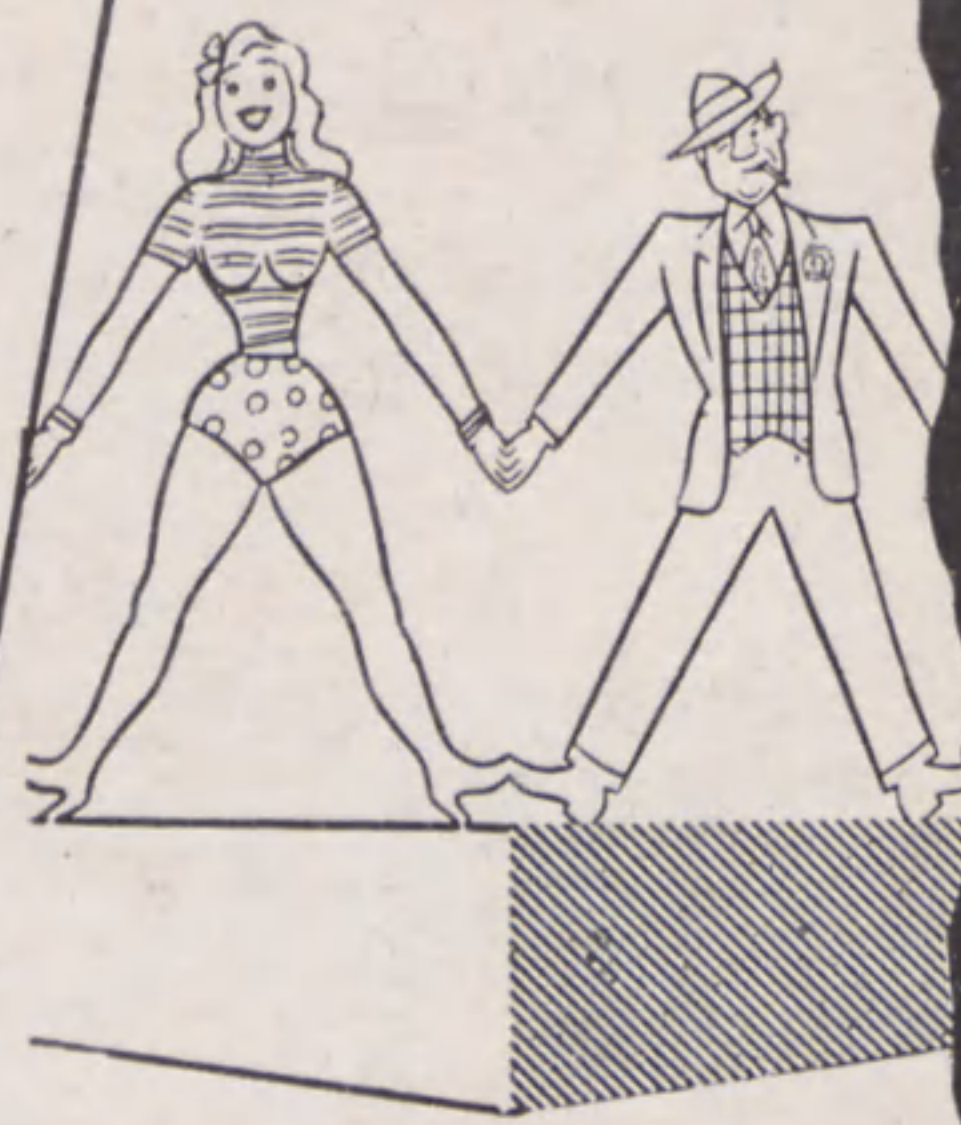
sue me, sue me, what can you do me? I love you. _____ you.

rit.

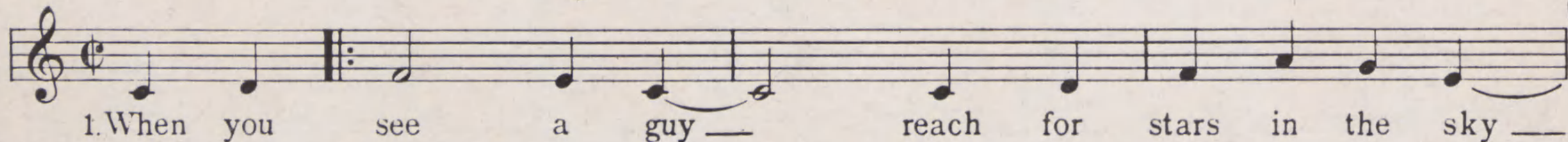
Songs from the Score

GUYS & Dolls

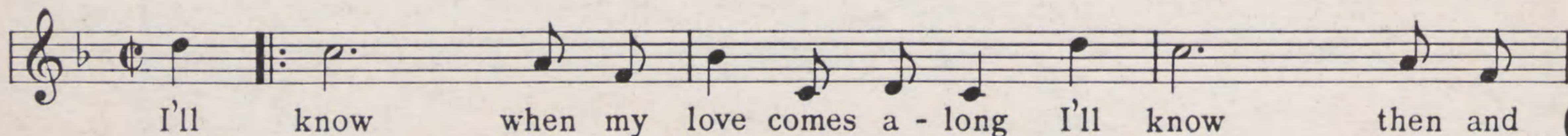
A MUSICAL FABLE OF BROADWAY
LYRICS AND MUSIC BY
FRANK LOESSER



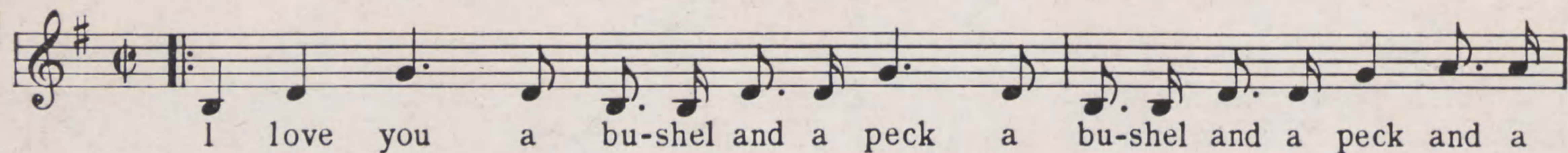
Guys And Dolls



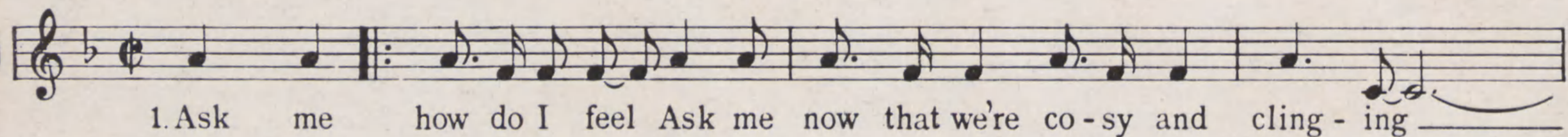
I'll Know



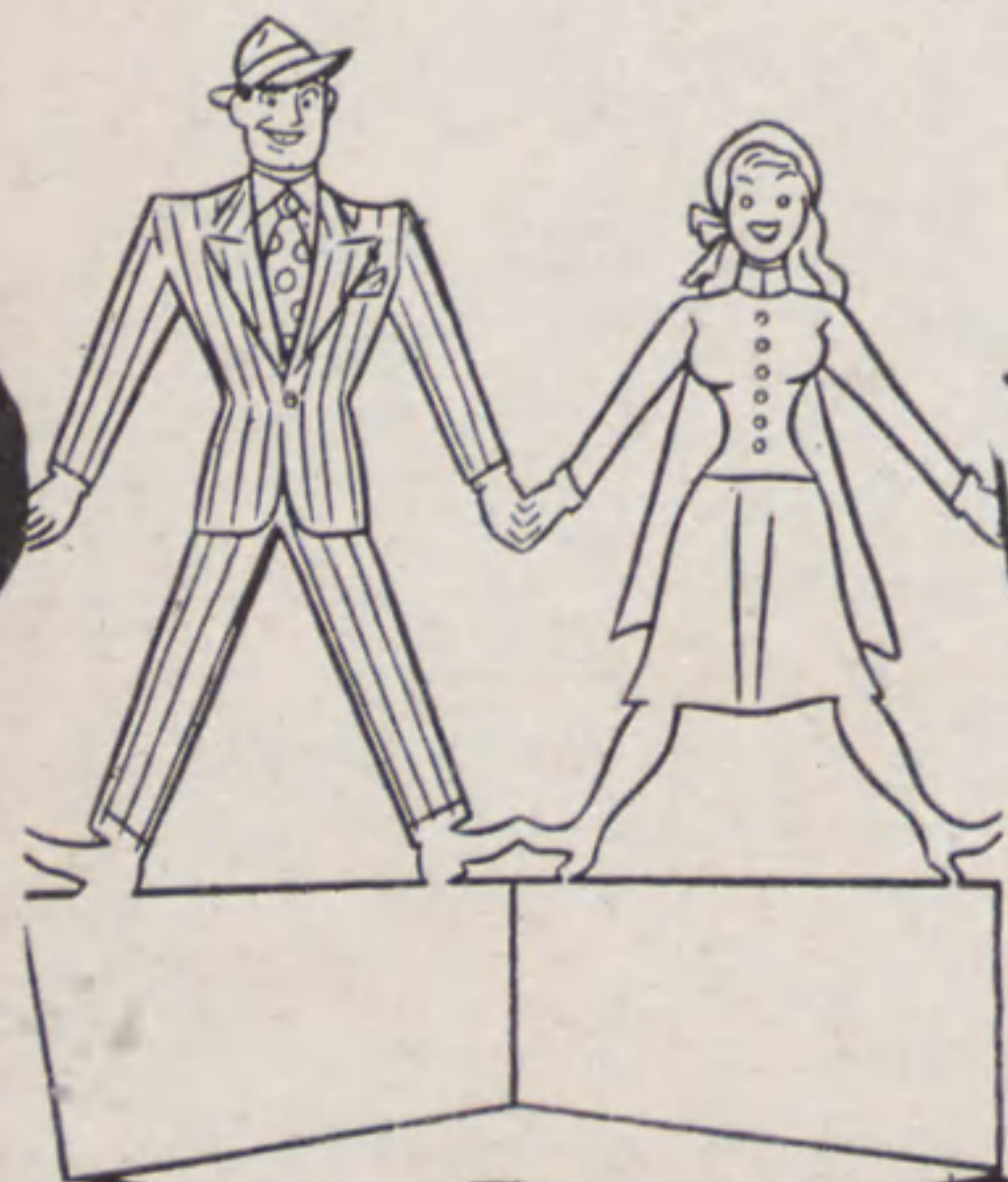
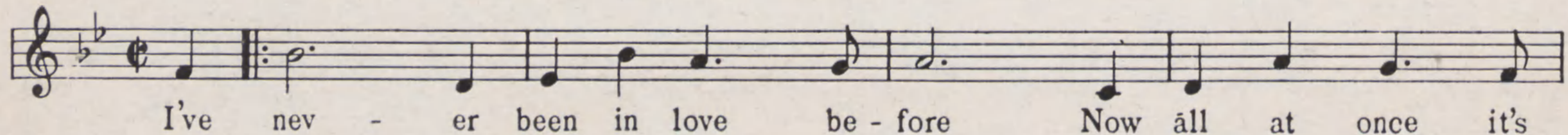
A Bushel And A Peck



If I Were A Bell



I've Never Been In Love Before



SUSAN PUBLICATIONS, INC.

EDWIN H. MORRIS AND COMPANY, INC.

Sole Selling Agents

1619 BROADWAY

NEW YORK 19, N. Y.