

# ON GRANDMA'S KITCHEN FLOOR



AS SUNG IN  
"RUFUS RASTUS"

LYRIC BY  
HOWARD  
HERRICK

MUSIC BY  
ERNEST  
HOGAN

5



PUBLISHED BY  
**CHAS. K. HARRIS**  
NEW YORK  
CHICAGO  
CANADIAN-AMERICAN MUSIC CO. LTD.-TORONTO, CANADA.  
ALBERT & SON  
LONDON AND SYDNEY



STARMER



# Try this over on your Piano.

## Belle of the Ball.

Words & Music by CHAS. K. HARRIS.

Tempo di Valse Moderato.

The piano introduction is in 3/4 time, starting with a treble clef and a key signature of one flat (B-flat). It begins with a forte (f) dynamic. The melody is in the right hand, and the accompaniment is in the left hand, featuring a steady bass line and chords.

VOICE.

The vocal line is in 3/4 time, starting with a treble clef and a key signature of one flat. The lyrics are: "1. You ask me why I'm sad at heart, You nev - er / 2. I'll ne'er for - get the ball that night, My sweet-heart". The piano accompaniment is in the left hand, starting with a piano (p) dynamic.

The vocal line continues with the lyrics: "hear me laugh, \_\_\_\_\_ You ask me why my / was di - vine, \_\_\_\_\_ And as I kissed her". The piano accompaniment continues in the left hand.

The vocal line concludes with the lyrics: "tears they fall, up - on her pho - to - graph, \_\_\_\_\_ She / dear sweet lips, she prom - ised to be mine, \_\_\_\_\_ And". The piano accompaniment concludes in the left hand.

Copyright, MCMVI by Chas. K. Harris. New York.  
British Rights Secured.

Complete copies may be had where you bought this.

# On Grandma's Kitchen Floor.

Words by HOWARD HERRICK.

Music by ERNEST HOGAN.

Moderato con espressivo.

The piano introduction is in G major, 2/4 time, and consists of 8 measures. It begins with a mezzo-forte (*mf*) dynamic. The melody in the right hand features a series of chords and eighth notes, while the left hand provides a steady accompaniment of eighth notes. The piece concludes with a *rall. e dim.* (rallentando and diminuendo) marking and ends with a fortissimo (*ff*) dynamic.

The first line of the song features a vocal melody in G major, 2/4 time, with lyrics: "In the midst of toil and trou-ble When sor - rows come and go I I went fish - ing in the mill-stream At just the break of day I". The piano accompaniment is in the same key and time, starting with a piano (*p*) dynamic. The vocal line is written on a single staff, and the piano accompaniment is on two staves.

The second line of the song continues the vocal melody with lyrics: "love to think of child-hood days The days of long a - go. I I wan-dered i - dly through the woods When it was time to play, I'd". The piano accompaniment continues with the same key and time signature, maintaining the piano (*p*) dynamic.

played down in the barn-yard Ran er-rands to the store, But the  
give the world and all its wealth If time could but re-store, Those

dear-est place of all to me Was grand-ma's kitch-en floor.  
hap-py days when I was young On grand-ma's kitch-en floor.

CHORUS.  
Valse lento.

Down in grand-ma's kitch-en play-ing on the floor,—

Eat - ing grand - ma's cook - ies beg - ging for some

more, \_\_\_\_\_ Watch - ing grand - ma knit - ting,

hear - ing grand - ma snore \_\_\_\_\_ I wish I were a

child a - gain, On grand - ma's kitch - en floor. \_\_\_\_\_

*Lento.*

*rit.*

# POPULAR FAVORITES BY THE MOST POPULAR COMPOSERS.

## Somewhere.

Words and Music by CHAS. K. HARRIS.

REFRAIN. *con espressione.*



Some - where the sun is shin - ing, Some - where a lit - tle rain,.... Some - where a heart is piu - ing, For love... but all in

Copyright, MCMVI, by Chas. K. Harris.

## Would You Care?

Words and Music by CHAS. K. HARRIS.

CHORUS.



Would you care.... if I should leave you?... Would you care.... if we should part?... Would you care.... if some-one told you... That an -

Copyright, MCMV, by Chas. K. Harris.

## Fly Away, Birdie, to Heaven.

Words and Music by CHAS. K. HARRIS.

CHORUS.



Fly a - way, bird - ie, to heav - en, Find our dear Mam - ma there,.... Tell her that we are so lone - ly, Pa - pa is sigh - ing and

Copyright, MCMV, by Chas. K. Harris.

## The Belle of the Ball.

Words and Music by CHAS. K. HARRIS.

CHORUS. *Valse lento*



Belle of the ball,.... She was sweet - er than all,.... With a face so fair and nut - brown hair, The queen of them all,....

Copyright, MCMV, by Chas. K. Harris.

## For Sale — A Baby.

Words and Music by CHAS. K. HARRIS.

REFRAIN.



For sale, a ba - by,.... with gold - en hair,.... For sale, a ba - by,.... so sweet and fair,.... For sale, a ba - by,.... who'll smile and

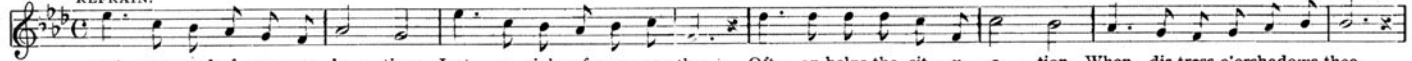
Copyright, MCMIII, by Chas. K. Harris.

## Just One Word of Consolation.

Words by FRANK B. WILLIAMS.

Music by TOM LEMONIER.

REFRAIN.



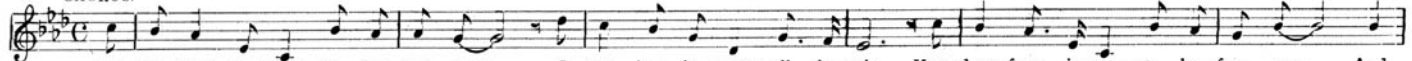
Just one word of con - so - la - tion, Just a sigh of sym - pa - thy, Oft - en helps the sit - u - a - tion, When dis - tress o'er - shadows thee,

Copyright, MCMVI, by Chas. K. Harris.

## I'm Trying So Hard To Forget You.

Words and Music by CHAS. K. HARRIS.

CHORUS.



I'm try - ing so hard to for - get you, I try, but it seems all in vain, Your dear face is ev - er be - fore me, And

Copyright, MCMIV, by Chas. K. Harris.

## Sister.

Words by ALAN M. RATTRAY.

Music by CLARENCE VAUGHN.

REFRAIN.



Sis - ter,.... my lit - tle sis - ter, Whis - per,.... a fond good - bye,.... Soon I'll be re - turn - ing, So, lit - tle girl, you must not

Copyright, MCMV, by Chas. K. Harris.

## I Know A Girl Like You.

By BILLE E. TAYLOR.

CHORUS. *Not too slow.*



I know a girl like you,.... And she's a nice girl, too, She's the on - ly girl in all this world I'd like to woo,.... And that's the

Copyright, MCMVI, by Chas. K. Harris.

## Dreaming, Love, of You.

Words and Music by CHAS. K. HARRIS.

REFRAIN. *Valse lenta (tenderly).*



Dream - ing, dream - ing, While the stars are gleam - ing, Dream - ing of you al - ways, lit - tle girl, my dar - ling, Sigh - ing, cry -

Copyright, MCMV, by Chas. K. Harris.

Published by CHAS. K. HARRIS,

NEW YORK:  
31 West 31st Street,  
MEYER COHEN, Mgr.

CHICAGO:  
Grand Opera House Bldg.,  
JOE M. HARRIS, Mgr.

Complete copies can be had at all Music and Department Stores,  
or will be sent postpaid, 25 cents each, 6 for \$1.00.