

TWENTIETH  
CENTURY  
BLUES

FROM

CAVALCADE

PICTURE OF THE GENERATION

by

NOËL  
COWARD

A FOX PICTURE

CHAPPELL-HARMS INC.

62 WEST 45th ST.

NEW YORK, N. Y.

CHAPPELL & CO., LTD.

LONDON — SYDNEY

"Service to Music Lovers"

DEER PARK MUSIC SHOP

# 20<sup>th</sup> CENTURY BLUES

from  
"CAVALCADE"

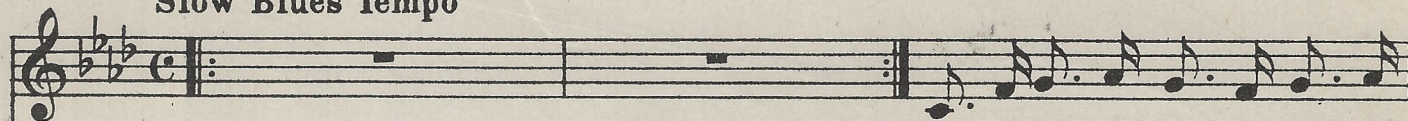
Produced at Drury Lane Theatre  
by CHARLES B. COCHRAN

Words and Music by

NOËL COWARD

Slow Blues Tempo

VOICE



Why is it that civ - il - ised hu -

PIANO

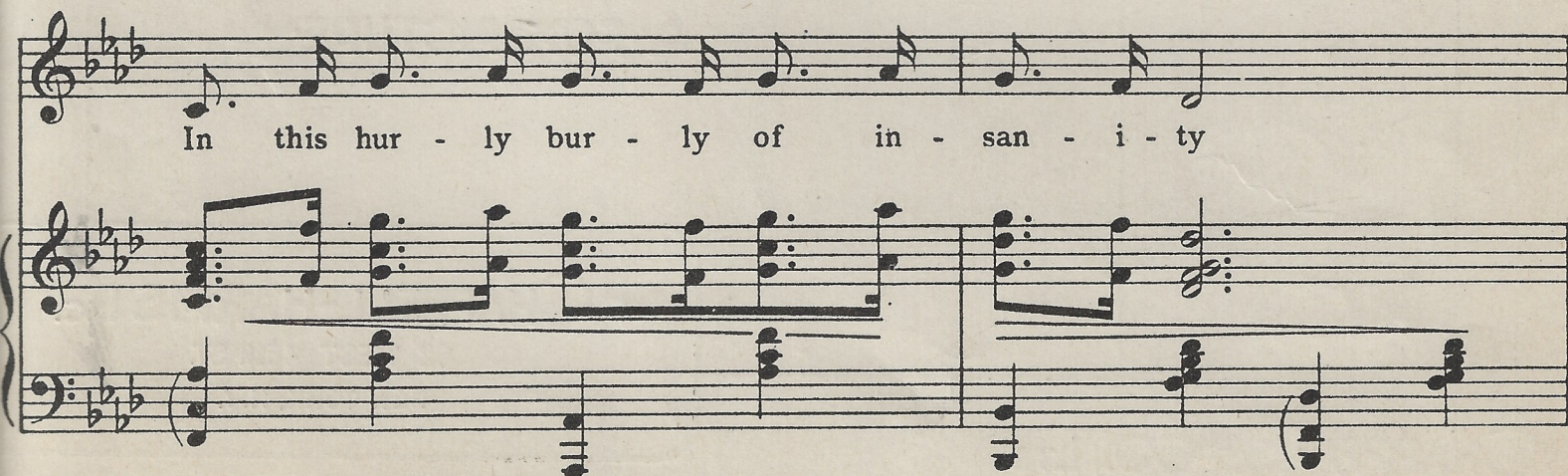


- man - i - ty

can make this world so wrong?



In this hur - ly bur - ly of in - san - i - ty



Our dreams can-not last long. We've reach'd a dead - line,

A press head - line ev - 'ry sor - row. Blues va-lue is

news va - lue to - mor - - - row.

REFRAIN

Blues, Twen-ti-eth Cen-tu-ry Blues are get-ting me down.

This system contains the first line of the refrain. It features a vocal line on a treble clef staff and piano accompaniment on two staves (treble and bass clefs). The key signature is B-flat major (two flats). The time signature is 2/4. The piano accompaniment includes a triplet of eighth notes in the first measure and a dynamic marking of *ff* (fortissimo) in the second measure.

Who's \_\_\_\_\_ escap'd those dreary Twen-ti-eth Cen-tu-ry Blues? Why,

This system contains the second line of the refrain. It features a vocal line on a treble clef staff and piano accompaniment on two staves. The piano accompaniment includes a dynamic marking of *f* (forte) in the second measure.

if there's a god in the sky, Why should-n't he grin

This system contains the third line of the refrain. It features a vocal line on a treble clef staff and piano accompaniment on two staves. The piano accompaniment includes a triplet of eighth notes in the first measure and a dynamic marking of *f* (forte) in the second measure.

High \_\_\_\_\_ a-bove this drear-y Twen-ti-eth Cen-tu-ry din?

This system contains the fourth line of the refrain. It features a vocal line on a treble clef staff and piano accompaniment on two staves.

In this strange il - lu - sion, cha - os and con - fu - sion, Peo - ple seem to lose their way.

What is there to strive for, Love or keep a - live for? Say hey! hey! call it a day! Blues,

No - thing to win - or to lose, — it's get - ting me down. Who's

— es - cap'd those drear - y Twen - ti - eth Cen - tu - ry Blues? Blues?

# SONG SUCCESSES FROM THE OPERETTA "THE DUBARRY"

## I Give My Heart

Words by ROWLAND LEIGH  
from the German of  
PAUL KNEPLER & J. M. WELLEMINSKY

Music by  
CARL MILLOCKER  
Arr. by Theo Mackeben

REFRAIN

I give my heart, Just to one man, Lov-ing as  
on ly wo-man can This too I swear,  
While I am there All I pos sess is his to

Copyright, MCMXXXII, by Chappell & Co. Ltd

## IF I AM DREAMING

Words by ROWLAND LEIGH  
from the German of  
PAUL KNEPLER & J. M. WELLEMINSKY

Music by  
CARL MILLOCKER  
Arr. by Theo Mackeben

If I am dream-ing  
Let me not be wo-ken, But may my dream-ing Run its course un-  
bro-ken. Since you have found me And wo-ven 'round me A spell that's

Copyright, MCMXXXII, by Chappell & Co. Ltd.

## THE DUBARRY

Words by ROWLAND LEIGH  
from the German of  
PAUL KNEPLER & J. M. WELLEMINSKY

Music by  
CARL MILLOCKER  
Arr. by Theo Mackeben

They bend the knee, to Du-bar-ry, And pray some-day she may be free. It's  
so u-nique, and chic to be the "cher a-mil" of Du-bar-ry. She's  
climbed the tree, has Du-bar-ry, She han-dles scan-dals skil-ful-ly. She

Copyright, MCMXXXII, by Chappell & Co. Ltd.

## WITHOUT YOUR LOVE

Words by ROWLAND LEIGH  
from the German of  
PAUL KNEPLER & J. M. WELLEMINSKY

Music by  
CARL MILLOCKER  
Arranged by THEO MACKEBEN

Without your love What would I care If heav-en a-  
bove me were storm-swept or fair? With-out your love What  
would I do To mas-ter some new way Of fac-ing each

Copyright, MCMXXXII, by Chappell & Co. Ltd

CHAPPELL-HARMS INC.  
62 WEST 45TH STREET  
NEW YORK N. Y.