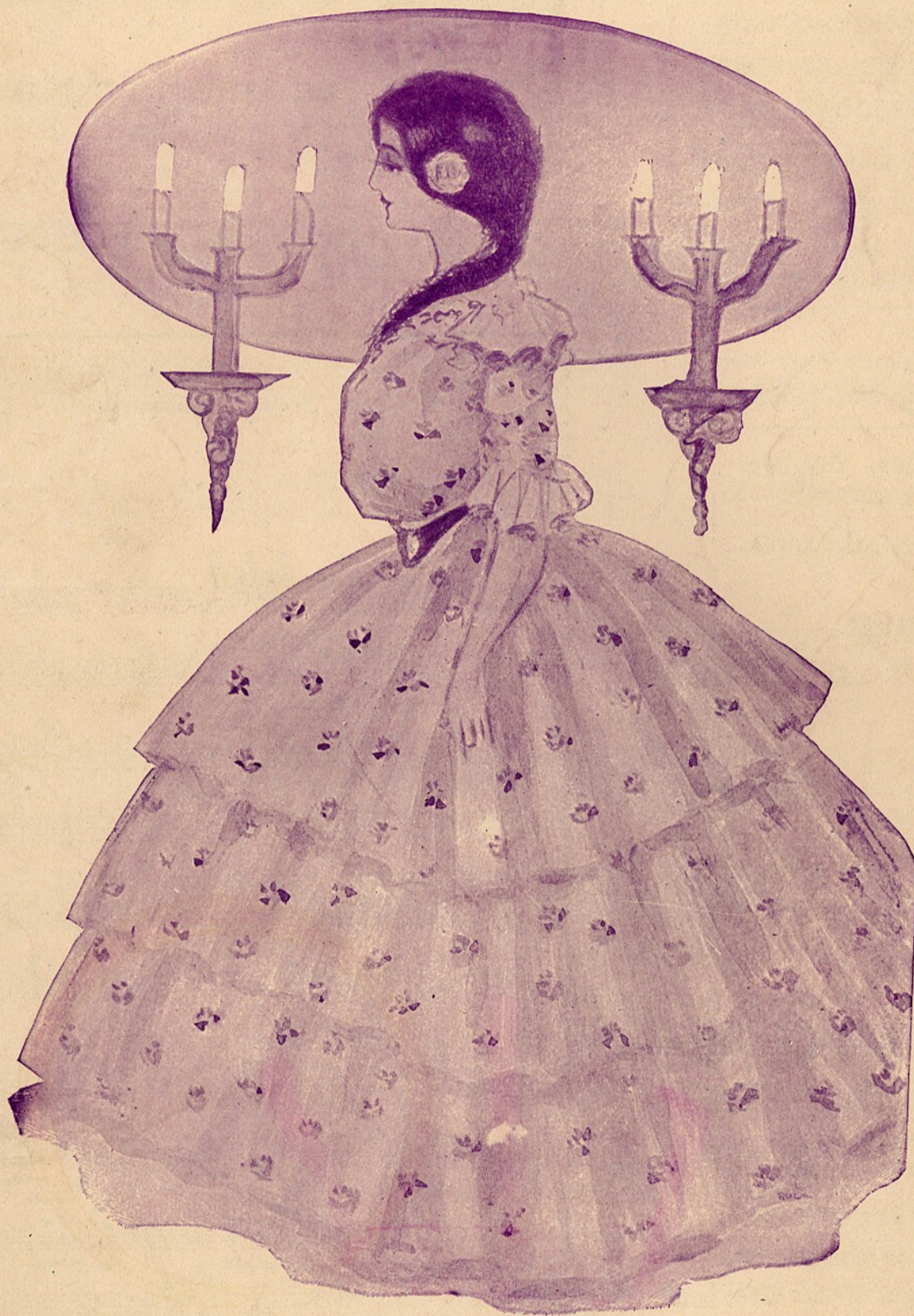


Lillian Mae Peterson

# The Sweetest Girl In Dixie

WORDS BY JAMES O'DEA · MUSIC BY R. J. ADAMS

WHITNEY · WARNER · PUB. CO. · DETROIT · NEW YORK · 5



A  
M.N.G.

Published by  
**SHAPIRO, REMICK  
& COMPANY**  
Proprietors of  
The **WHITNEY WARNER PUB. Co.**  
45 WEST 28<sup>th</sup> STREET, NEW YORK.

*The Big Firm*  
10 Witherell St.  
DETROIT, Mich.  
87-89 Clark St.  
CHICAGO, Ill.



**Sweetest Girl in Dixie.**

Words by JAS. ODEA.  
CHORUS.

Music by ROBT. J. ADAMS

round my heart, the sweetest girl in Dix-ie. By love's  
art, has cast a spell that's tru-ly won me, Shall we  
part, well I should mur-mur oix-lo, For ah's my pearl, the  
sweetest girl in dear, old Dix-ie-land. land.

Copyright, 1903, by The Whitney Warner Pub Co., Detroit Mich.  
Entered according to Act of the Parliament of Canada in the year 1903,  
by Messrs. Warner & Co. Limited of the Department of Agriculture.



**B**ELOW we present to  
you the instrumental  
popular craze of the  
country, "NAVAJO"

**NO MUSIC CABINET COMPLETE WITHOUT IT**

**New Song Successes**

**TAKE ME BACK TO MY  
LOUISIANA HOME**

**IF I HAD A THOUSAND  
HEARTS**

**DAISY DONOHUE**

**THAT'S HOW I LOVE YOU  
MAME**

**IN ZANZIBAR**

**NAVAJO. Song**

**IT WAS THE DUTCH**

**THE MAN BEHIND**

**IN THE HEART OF THE  
MIGHTY DEEP. (Bass)**

**Shapiro, Remick & Co.**

Proprietors of the

WHITNEY-WARNER PUB. CO.

New York, 45 West 28th St.

Detroit, 10 Witherell St.

Chicago, 87-89 Clark St.

**SEND FOR ILLUSTRATED CATALOGUE FREE**

**NAVAJO.**

Indian Characteristique.

Egbert Van Alstyne.

Copyright, 1903 by Shapiro, Bernstein & Co.  
International Copyright secured. 87-89 Clark St. 45 W. 28th St.  
Chicago, Ill. New York.  
Entered according to Act of the Parliament of Canada in the year 1903 by Shapiro, Bernstein & Co. in the Department of Agriculture. All rights reserved.



RBR  
Music  
#1454

# Sweetest Girl in Dixie.

3

Words by JAS. O'DEA.

Music by ROBT. J. ADAMS.

**Moderato.**

The piano introduction consists of two staves in 2/4 time, marked 'Moderato'. The right hand features a melody of eighth and sixteenth notes, while the left hand provides a steady bass line with eighth notes. The piece begins with a forte (*f*) dynamic.

**Voice.**

**Till ready.**

1. South - ward \_\_\_\_\_ where the ba-you  
2. Blue eyes \_\_\_\_\_ has the southern

The first vocal line is on a single staff. The piano accompaniment is on two staves. The piano part includes a repeat sign and a dynamic marking of *p* (piano) for the second half of the line.

breez-es blow, \_\_\_\_\_ Shore - ward \_\_\_\_\_ where the palmtrees bend and sway, —  
maid of mine, \_\_\_\_\_ Red lips \_\_\_\_\_ that would lure the hon-ey bee, —

The second vocal line continues the melody. The piano accompaniment features a dynamic marking of *f* (forte) for the first half and *p* (piano) for the second half.

Home - ward \_\_\_\_\_ to the sweetest girl I know, \_\_\_\_\_  
Grace - ful \_\_\_\_\_ as a swaying south-ern pine, \_\_\_\_\_

The final vocal line concludes the piece. The piano accompaniment includes dynamic markings of *p* (piano) and *f* (forte).

Published by Shapiro, Remick & Co.  
45 W. 28th St. N. Y.

Copyright, MCMIII, by The Whitney Warner Pub Co., Detroit Mich.  
Entered according to act of the Parliament of Canada in the year 1903,  
by Whaley Royce & Co. Limited at the Department of Agriculture.



Oft' times in my dreams I stray. Down South  
 Na - ture's own queen is she. Oft' times

in her old plan - ta - tion home, She reigns in that land of  
 thro' the lonely night I cry, Sweet - heart when the fields a -

bliss se - rene, There's where in my dreams I night - ly roam,  
 gain are green, Home - ward where my heart is I will hie,

Back to my Dix - ie Queen. For  
 Back to my Dix - ie Queen. For



CHORUS.

'round my heart,— the sweetest girl in Dix-ie. By love's

*p-f*

art,— has cast a spell that's tru - ly won me, Shall we

part, well I should mur - mur nix - ie, For she's my pearl, the

sweet-est girl in dear old Dix - ie - land. land.

1 2

8



If I were only You.

Words by ALFRED H. WILLIAMS. Music by ROBERT VAN ALSTYNE.

CHORUS.

If I were on - ly you sweet-heart, And you were on - ly  
me, If I were on - ly in your place, How  
hap - py I would be, If I hold your lit - tle  
hand in mine, look in your eyes of blue, And soft - ly

Copyright 1904 by Shapiro, Remick & Co.  
45 West 28th St., New York.  
Branches, Detroit, Chicago, London.

# "Take Me Back To My Louisiana Home"



**B**ELOW we present you the chorus of the most beautiful rural ballad ever published. A charming story set to inspiring music--the song that will live forever.

Comic Songs

THE MAN BEHIND  
CORDALIA MALONE  
DEAR SING SING  
HE WAS A SAILOR  
WHO, WHO, WHO, HOOLA  
HOOLAHAN  
IT WAS THE DUTCH  
Stories Adam Told to Eve  
EPRAHAM  
JOHNNIE  
WHEN YOUR BROKE

## Shapiro, Remick & Co.

Proprietors of the  
WHITNEY-WARNER PUB CO.  
New York, 45 West 28th St.  
Detroit, 10 Witherell St.  
Chicago, 87-89 Clark St.

SEND FOR ILLUSTRATED CATALOGUE FREE

Take me back to my Louisiana Home.

Words by WILL D. COBB. Music by GUS EDWARDS.

CHORUS.

Birds are sing-ing in the trees, branch-es bow-ing to the breeze, flow-ers  
fair fill the air, ev'-ry where I roam, Land of hon-ey and of  
bee, There my sweet-heart waits for me, Way down south in the  
land of cot-ton. Take me back to my Lou-si-a-n-a home.

*rall.* *D.C.*

Copyright 1904 by Shapiro Remick & Co.  
45 West 28th St., New York.  
Branches, Detroit, Chicago & London. All Rights Reserved.