

# MY TIME OF DAY

L826  
28

by FRANK LOESSER



FEUER AND MARTIN present

## GUYS & DOLLS

A MUSICAL FABLE OF BROADWAY

Based on a story  
and characters by  
DAMON RUNYON

Music and Lyrics by  
FRANK LOESSER

Staged by  
GEORGE S. KAUFMAN



Book by

JO SWERLING and ABE BURROWS

Dances and musical  
numbers staged by  
MICHAEL KIDD

Settings and  
lighting by  
JO MIELZINER

Costumes by  
ALVIN COLT

### Songs from the Score

GUYS AND DOLLS  
I'LL KNOW  
FOLLOW THE FOLD  
MY TIME OF DAY  
FUGUE FOR TINHORNS  
TRAVELING LIGHT  
LUCK BE A LADY  
MORE I CANNOT WISH YOU  
A BUSHEL AND A PECK  
IF I WERE A BELL  
I'VE NEVER BEEN IN LOVE BEFORE  
SUE ME  
SIT DOWN YOU'RE ROCKIN' THE BOAT  
SHANGO  
IT FEELS LIKE FOREVER



Musical Director  
IRVING ACTMAN

Orchestral  
Arrangements by  
GEORGE BASSMAN

Vocal Arrangements  
and Direction by  
HERBERT GREENE

SUSAN PUBLICATIONS, INC.  
EDWIN H. MORRIS AND COMPANY, INC.  
Sole Selling Agents

1619 BROADWAY • NEW YORK 19, N. Y.



# MY TIME OF DAY

From the Broadway Production "GUYS and DOLLS"

By FRANK LOESSER

TUNE UKULELE A D F# B

*Andante dolce*

*mp*

*Rubato mf ten.*

*con la voce mf*

Col 8

*rit.*

*dolce*

*f*

*ff. rit.*



Copyright 1950 by Frank Loesser  
 Rights throughout the world controlled by Susan Publications, Inc.  
 Sole Selling Agent: EDWIN H. MORRIS & COMPANY, Inc., 1619 Broadway, New York 19, N.Y.  
*International Copyright Secured* *Engraved & Printed in U. S. A.*  
 All Rights Reserved Including Public Performance For Profit



my time of day, my time of day and you're the on-ly doll I ev-er want-ed to

*f* *p* *ten.* *f* *rit.* *accel.*

Detailed description: This system contains the first two lines of music. The vocal line starts with a forte (*f*) dynamic, then a piano (*p*) dynamic, followed by a tenuto (*ten.*) and forte (*f*) dynamic, and ends with a ritardando (*rit.*) and acceleration (*accel.*). The piano accompaniment features a 4/4 time signature, a key signature of one sharp (F#), and includes dynamics like *f*, *p*, and *sfx* (sforzando), along with markings for *rit.* and *accel.* and triplet figures.

share it with me.

*pp* *mp* *dolce*

Detailed description: This system contains the third and fourth lines of music. The vocal line begins with a piano (*p*) dynamic, then a pianissimo (*pp*) dynamic, and ends with a mezzo-piano (*mp*) dynamic and a *dolce* marking. The piano accompaniment continues with a 4/4 time signature, a key signature of one sharp (F#), and includes dynamics like *pp* and *mp*, along with *dolce* markings and triplet figures.

Detailed description: This system shows the piano accompaniment for the third system of music. It features a 4/4 time signature, a key signature of one flat (Bb), and includes a forte (*f*) dynamic and triplet figures.

That's my time of day and you're the on-ly doll I ev-er wanted to

*ten.* *rit.* *accel.*

*r.h.* *ff* *f* *sfx* *rit.* *accel.*

Detailed description: This system contains the fifth and sixth lines of music. The vocal line starts with a tenuto (*ten.*) dynamic, followed by a ritardando (*rit.*) and acceleration (*accel.*). The piano accompaniment includes a right-hand (*r.h.*) section with dynamics like *ff* and *f*, and markings for *sfx* (sforzando), *rit.*, and *accel.*.

share it with me.

*dolce*

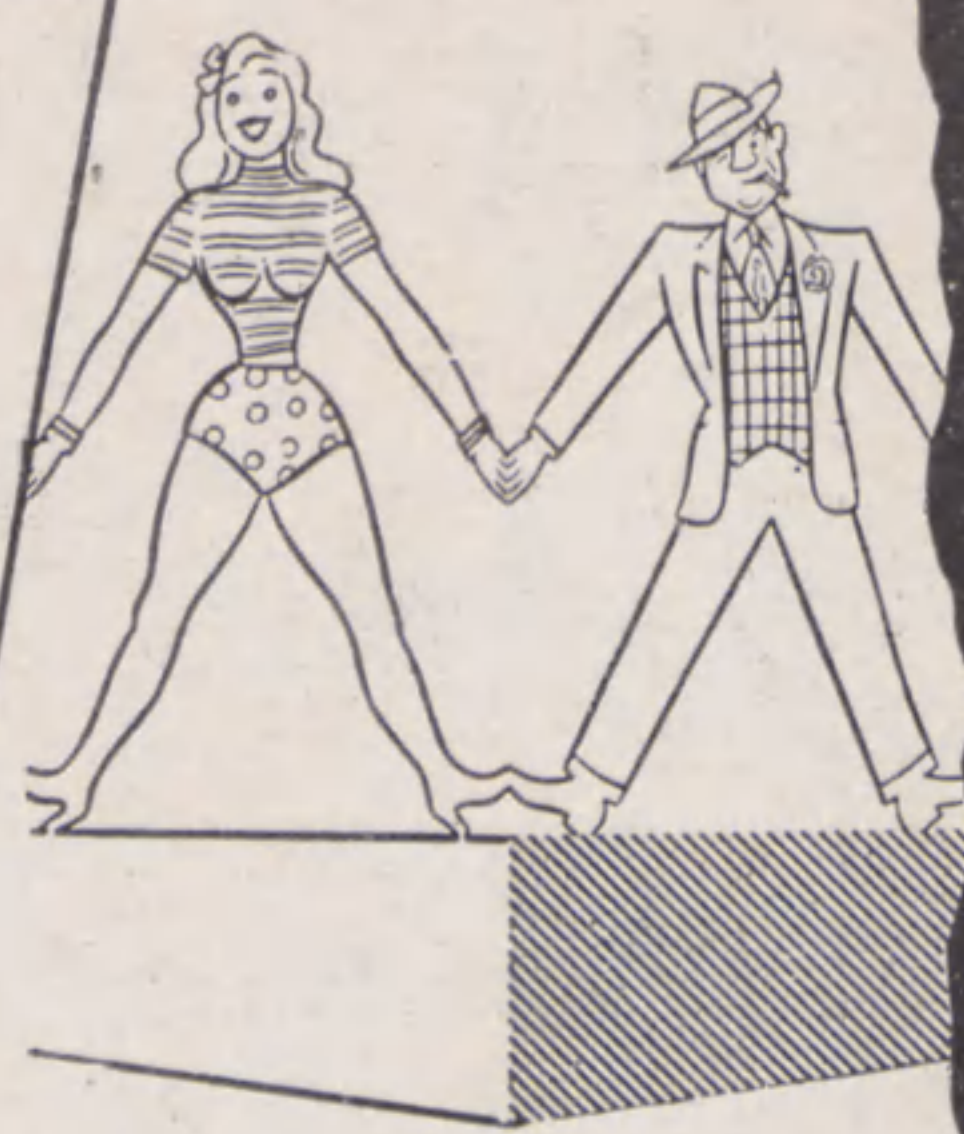
Detailed description: This system contains the seventh and eighth lines of music. The vocal line is marked *dolce*. The piano accompaniment features a 4/4 time signature, a key signature of one sharp (F#), and includes a mezzo-piano (*mp*) dynamic and triplet figures.



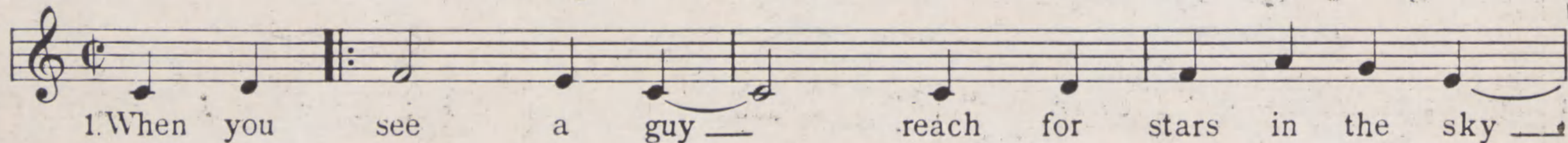
Songs from the Score

# GUYS & DOLLS

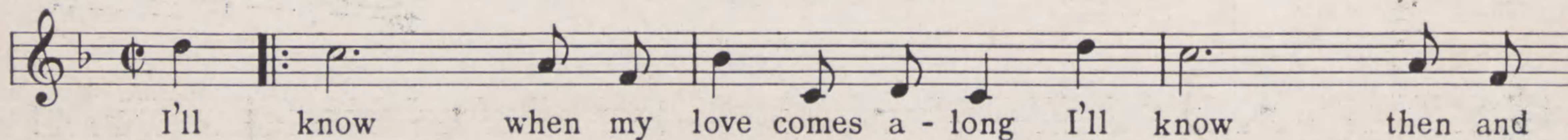
A MUSICAL FABLE OF BROADWAY  
LYRICS AND MUSIC BY  
**FRANK LOESSER**



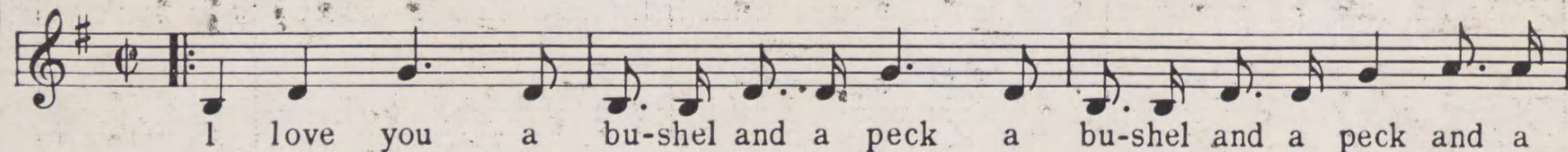
## Guys And Dolls



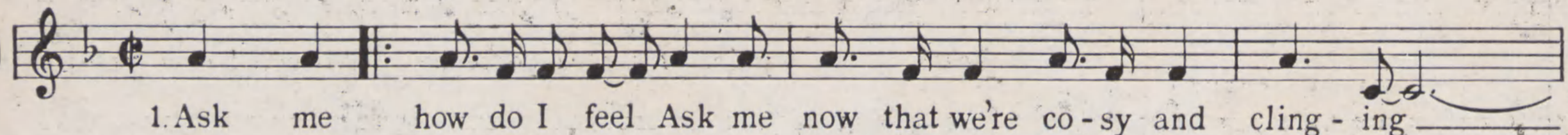
## I'll Know



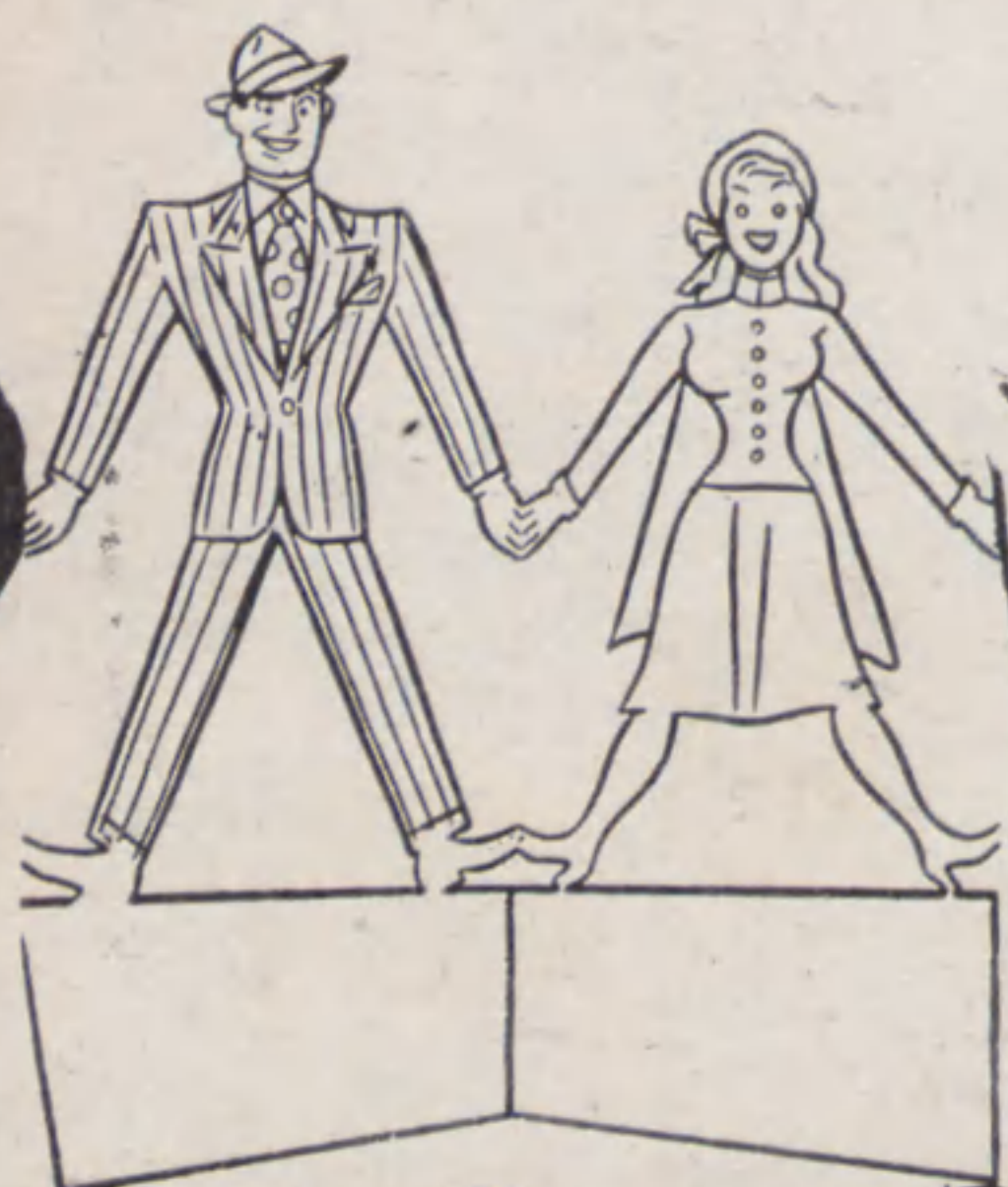
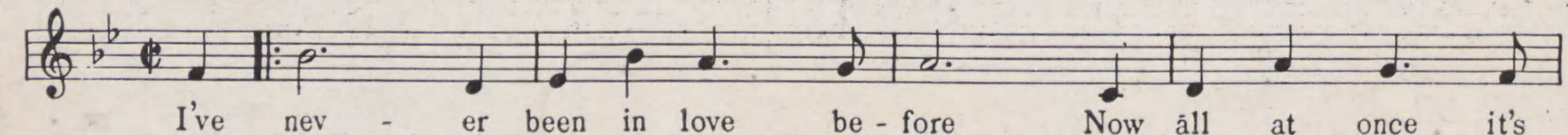
## A Bushel And A Peck



## If I Were A Bell



## I've Never Been In Love Before



SUSAN PUBLICATIONS, INC.

**EDWIN H. MORRIS AND COMPANY, INC.**

Sole Selling Agents

1619 BROADWAY

NEW YORK 19, N. Y.