

# MORE I CANNOT WISH YOU

L826  
31

by FRANK LOESSER



FEUER AND MARTIN present

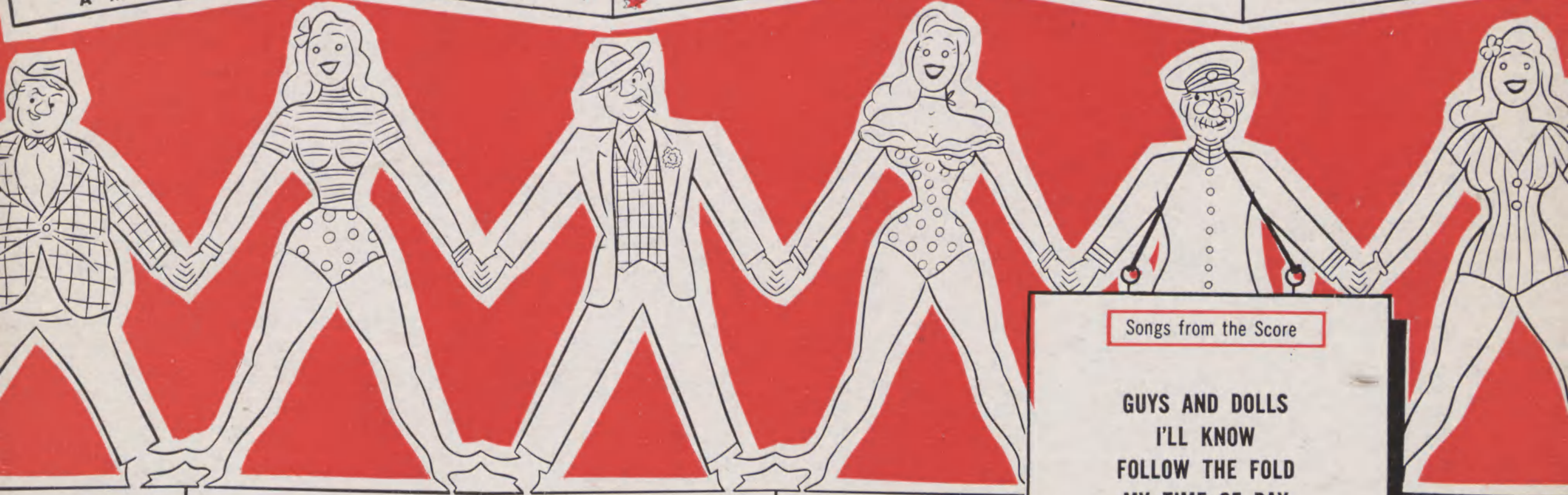
## GUYS & DOLLS

A MUSICAL FABLE OF BROADWAY

Based on a story  
and characters by  
DAMON RUNYON

Music and Lyrics by  
FRANK LOESSER

Staged by  
GEORGE S. KAUFMAN



Book by

JO SWERLING and ABE BURROWS

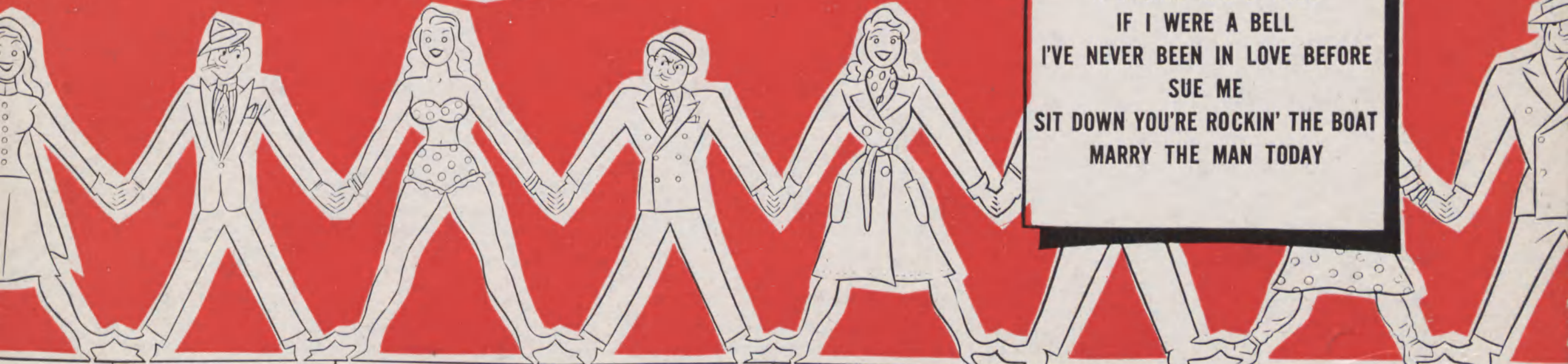
Dances and musical  
numbers staged by  
MICHAEL KIDD

Settings and  
lighting by  
JO MIELZINER

Costumes by  
ALVIN COLT

### Songs from the Score

GUYS AND DOLLS  
I'LL KNOW  
FOLLOW THE FOLD  
MY TIME OF DAY  
THREE CORNERED TUNE  
ADELAIDE'S LAMENT  
LUCK BE A LADY  
MORE I CANNOT WISH YOU  
A BUSHEL AND A PECK  
IF I WERE A BELL  
I'VE NEVER BEEN IN LOVE BEFORE  
SUE ME  
SIT DOWN YOU'RE ROCKIN' THE BOAT  
MARRY THE MAN TODAY



Musical Director  
IRVING ACTMAN

Orchestral  
Arrangements by  
GEORGE BASSMAN

Vocal Arrangements  
and Direction by  
HERBERT GREENE

SUSAN PUBLICATIONS, INC.  
EDWIN H. MORRIS AND COMPANY, INC.  
Sole Selling Agents

1619 BROADWAY • NEW YORK 19, N. Y.



# MORE I CANNOT WISH YOU

From the Broadway Production "GUYS and DOLLS"

TUNE UKULELE A D F# B

By FRANK LOESSER

Slowly

Musical notation for the first system, featuring a treble and bass clef with chords and a melody line. The tempo is marked "Slowly".

Slowly

Musical notation for the second system, including guitar chords (C, Dm, C7) and lyrics: "Vel - vet I can wish you For the col - lar of your coat, — And".

Musical notation for the third system, including guitar chords (F, G, G9, C, Dm7) and lyrics: "for - tune smil - ing all a - long your way. — But".

Musical notation for the fourth system, including guitar chords (C, Dm, E+) and lyrics: "more I can - not wish you than to wish you find your love, — Your".



Copyright 1950 by Frank Loesser

Rights throughout the world controlled by Susan Publications, Inc.

Sole Selling Agents: EDWIN H. MORRIS & COMPANY, Inc., 1619 Broadway, New York 19, N.Y.

International Copyright Secured

Engraved & Printed in U. S. A.

All Rights Reserved Including Public Performance For Profit



Am F Em Dm G C Dm

own true love — this day. — Man-sions I can

C Dm C Dm C C7 F G G9

wish you, sev-en foot-men all in red — And call-ing cards u - pon a sil - ver

C Dm7 C Dm C Dm C Dm

tray — But more I can-not wish you than to wish you find your

E+ Am F Em Am Am7

love, — Your own true love, — this day. —



D7 G D7

Stand-ing there\_ gaz-ing at you\_ Full\_ of the bloom\_ of

This system contains the first three measures of the piece. The vocal line starts with a half note 'Stand-ing there', followed by a half note 'gaz-ing at you', and then a half note 'Full\_ of the bloom\_ of'. The piano accompaniment features a steady eighth-note bass line in the left hand and a more melodic line in the right hand. Chord diagrams for D7, G, and D7 are shown above the staff.

G C G D7 G A7b9

youth\_ Stand-ing there\_ gaz-ing at you\_ with the

This system contains the next four measures. The vocal line continues with 'youth\_', 'Stand-ing there\_', 'gaz-ing at you\_', and 'with the'. The piano accompaniment continues with similar rhythmic patterns. Chord diagrams for G, C, G, D7, G, and A7b9 are shown above the staff.

Dm Gm Dm G C Dm C Dm

sheep's eye\_ And the lick-er-ish tooth\_ Mu-sic I can wish you, mer-ry

This system contains the next seven measures. The vocal line includes 'sheep's eye\_', 'And the lick-er-ish tooth\_', and 'Mu-sic I can wish you, mer-ry'. The piano accompaniment features a consistent eighth-note bass line. Chord diagrams for Dm, Gm, Dm, G, C, Dm, C, and Dm are shown above the staff.

C Dm C C7 F G G9 C Dm7

mu-sic while you're young,\_ And wis-dom when your hair has turned to gray\_ But

This system contains the final four measures on the page. The vocal line includes 'mu-sic while you're young\_', 'And wis-dom when your hair has turned to gray\_', and 'But'. The piano accompaniment concludes with a final chord. Chord diagrams for C, Dm, C, C7, F, G, G9, C, and Dm7 are shown above the staff.



C Dm C Dm C Dm E+ Am F

more I can-not wish you than to wish you find your love,— Your own true

Em Am Am7 Dm Gm

love — this day — With the sheep's eye And the

Dm G C Am Em Dm G7 C Am

lick-er- ish tooth — And the strong arms to car-ry you a - way. —

*ten.*

Em Dm G7 C Am Em Dm G7 C

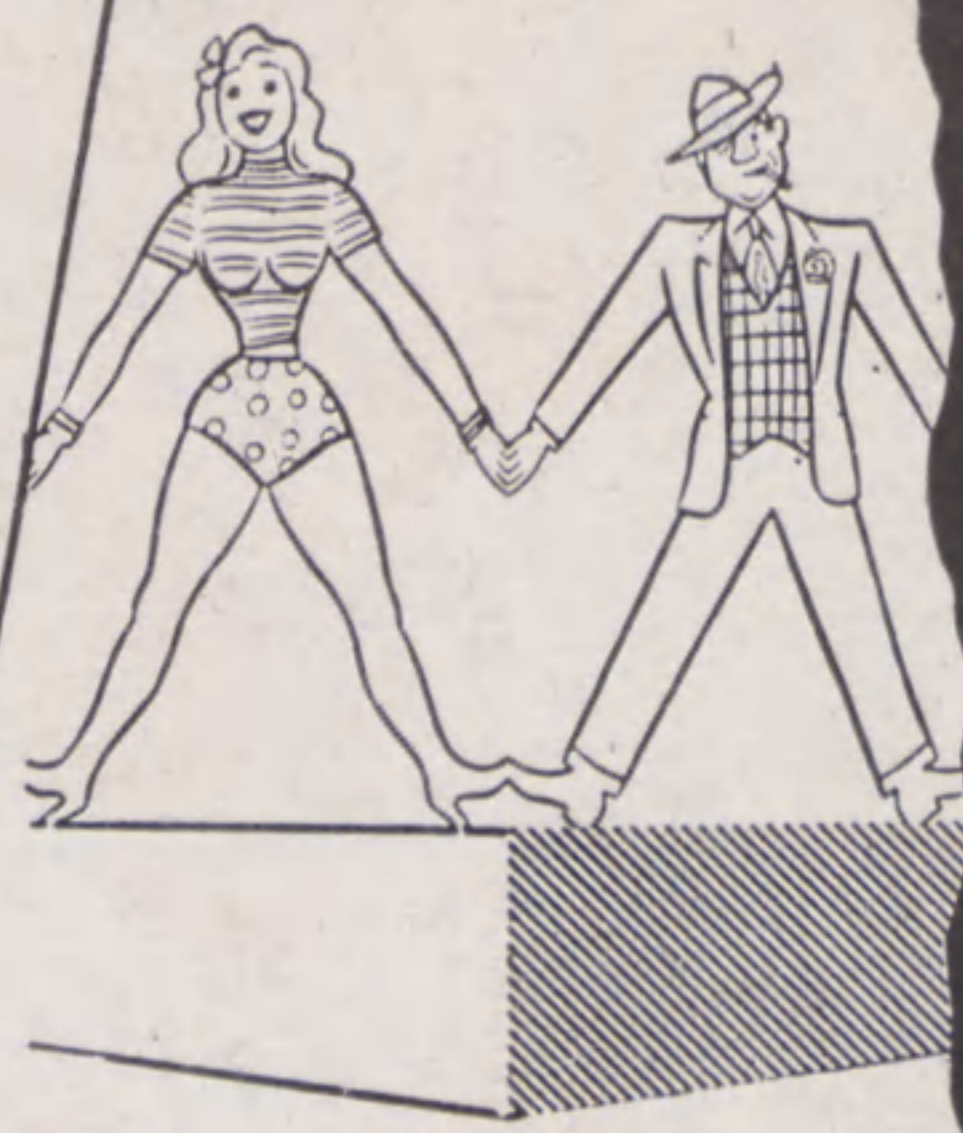
*p rall. pp*



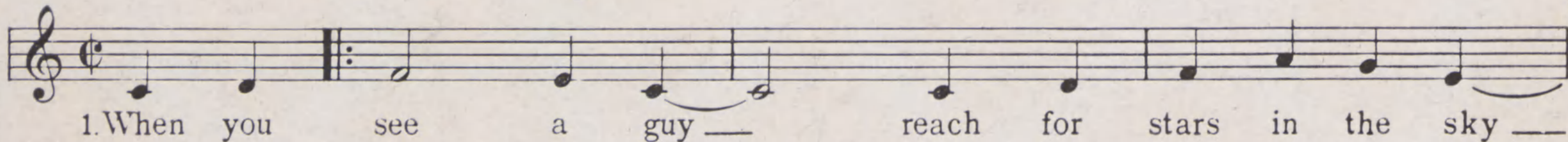
*Songs from the Score*

# GUYS & DOLLS

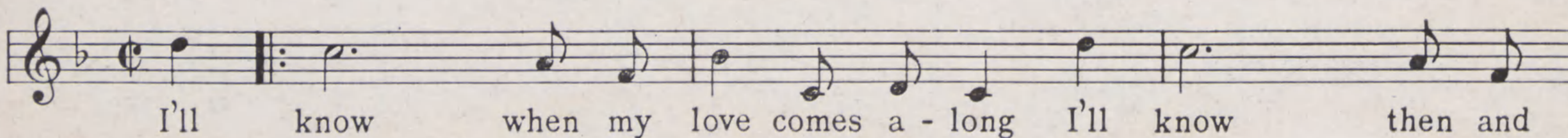
A MUSICAL FABLE OF BROADWAY  
LYRICS AND MUSIC BY  
**FRANK LOESSER**



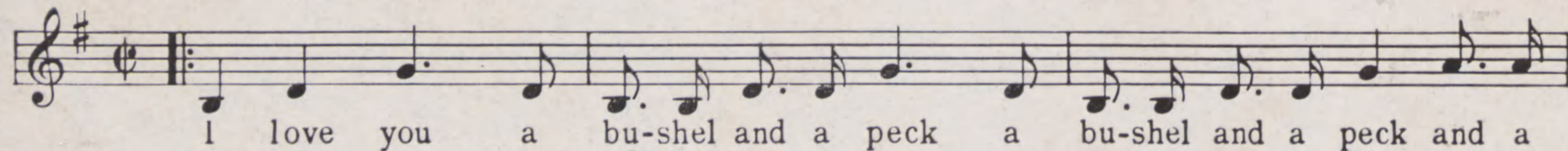
## Guys And Dolls



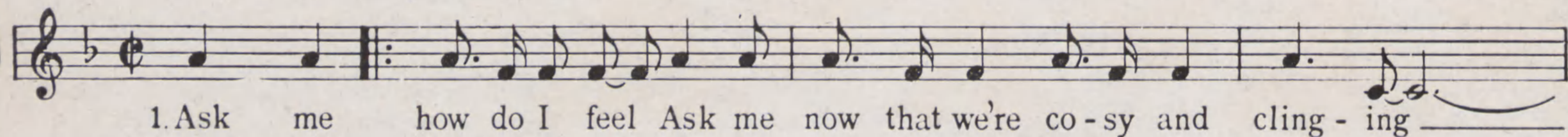
## I'll Know



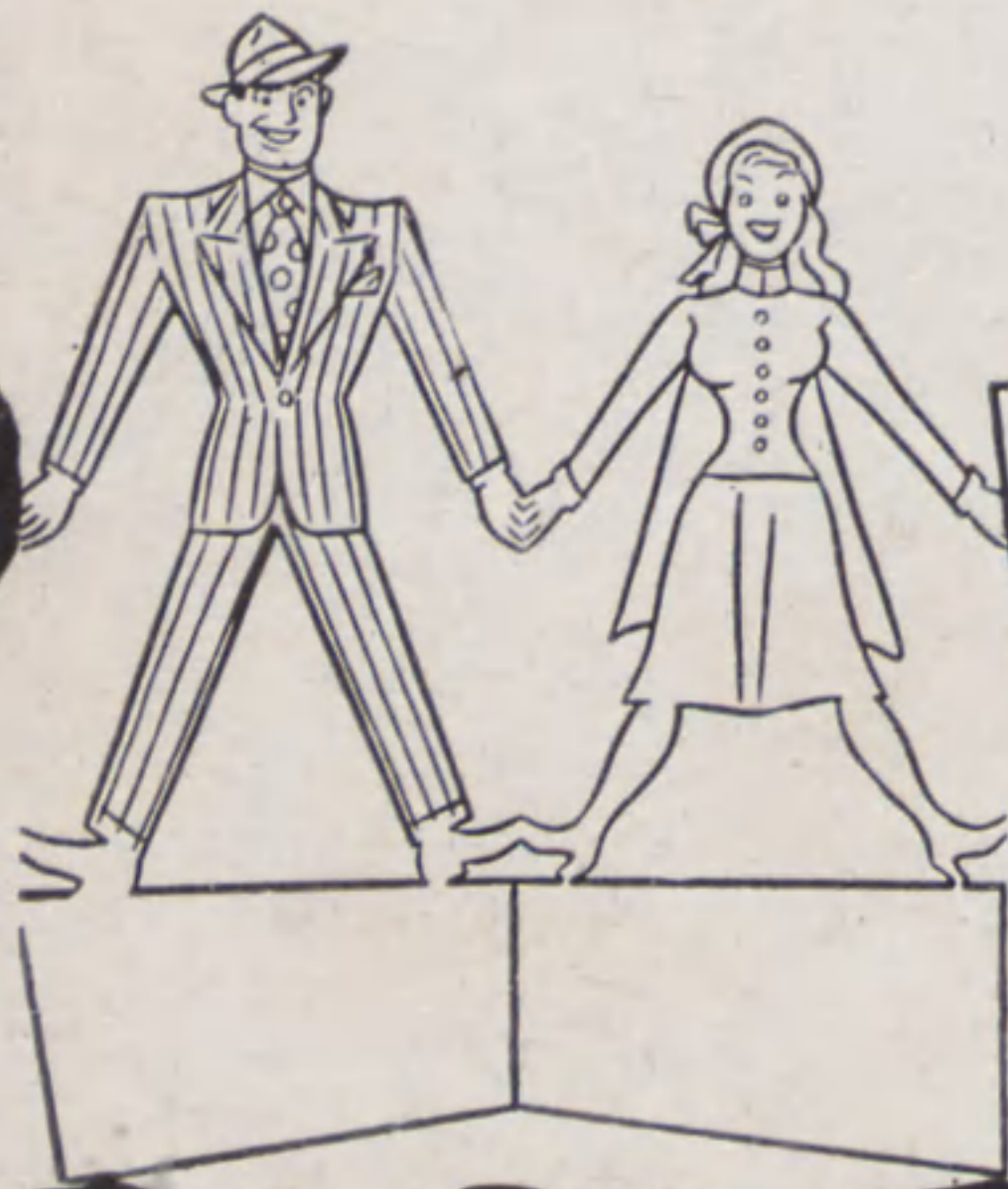
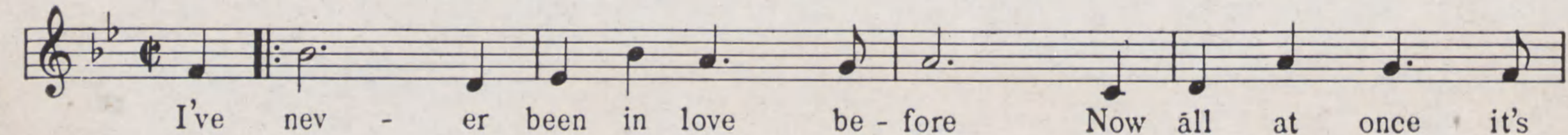
## A Bushel And A Peck



## If I Were A Bell



## I've Never Been In Love Before



SUSAN PUBLICATIONS, INC.

**EDWIN H. MORRIS AND COMPANY, INC.**

*Sole Selling Agents*

1619 BROADWAY

NEW YORK 19, N. Y.