

*Phillip Carl Sutton*

Written for a BBC Television Tribute to the Late President

*Spring 1963*

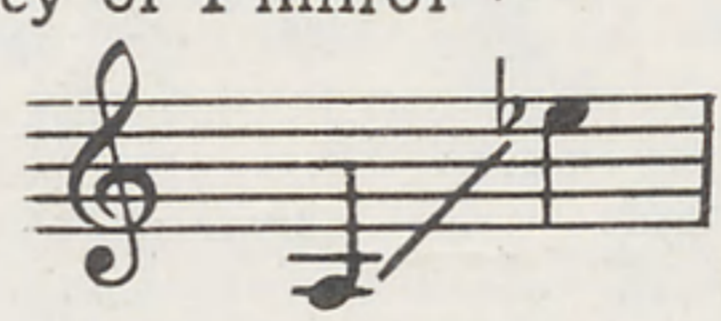
P9336

131

*John Fitzgerald Kennedy*

# IN THE SUMMER OF HIS YEARS

Key of E minor  
and  
Key of F minor } (A to Eb)



*Words by*  
HERBERT KRETZMER

*Music by*  
DAVID LEE



Seventy Five Cents  
in U.S.A.

LEEDS MUSIC CORPORATION



# IN THE SUMMER OF HIS YEARS

Written for a BBC Television tribute to the late President, JOHN F. KENNEDY

Key of Em and Fm (A-Eb)

Words by HERBERT KRETZMER  
Music by DAVID LEE



Slowly and Plaintively      Refrain

*Piano* *mp* *mf* *mp-mf*

A young man rode with his  
head held high, un-der the Tex-as sun, and no one guessed that a  
man so blessed would per-ish by the gun, Lord, would per-ish by the  
gun. A shot rang out like a sud-den shout,

Chord diagrams for guitar are provided above the vocal lines.

\*Chord names and diagrams for guitar.

Em D F B7 Em D C Am6 B

and heav-en held its breath, for the dreams of a mul-ti-tude of men rode

Em D B7 C Am6 B Em D B7 Em

with him to his death, Lord, rode with him to his death. Yes, the

Cmaj.7 Em Cmaj.7 B

heart of the world weighs heav-y — with the help-less-ness of tears, for the

Em F Em F Em D C B

man cut down in a Tex-as town IN THE SUM-MER OF HIS YEARS, the

Em D B7 Em Fm

sum - mer of his years. And

This system contains the first two staves of music. The top staff is a vocal line with lyrics "sum - mer of his years." and "And". Above it are guitar chords: Em, D, B7, Em, and Fm. The bottom two staves are piano accompaniment. The key signature has one sharp (F#).

Fm Eb Db Eb Fm Eb

we who stay must not ev - er lose the vic - tries that he

This system contains the second two staves of music. The top staff is a vocal line with lyrics "we who stay must not ev - er lose the vic - tries that he". Above it are guitar chords: Fm, Eb, Db, Eb, Fm, and Eb. The bottom two staves are piano accompaniment. The key signature has three flats (Bb, Eb, Ab).

Gb C7 Fm Eb Db Gb

won, for wher - ev - er men look to free - dom, then his

*rit. colla voce*

This system contains the third two staves of music. The top staff is a vocal line with lyrics "won, for wher - ev - er men look to free - dom, then his". Above it are guitar chords: Gb, C7, Fm, Eb, Db, and Gb. The bottom two staves are piano accompaniment. The key signature has four flats (Bb, Eb, Ab, Db). The instruction "rit. colla voce" is written above the piano part.

Fm Eb Db C Fm Eb C7 F

soul goes rid - ing on, Lord, his soul goes rid - ing on.

*a tempo rit. p*

This system contains the final two staves of music. The top staff is a vocal line with lyrics "soul goes rid - ing on, Lord, his soul goes rid - ing on.". Above it are guitar chords: Fm, Eb, Db, C, Fm, Eb, C7, and F. The bottom two staves are piano accompaniment. The key signature has four flats (Bb, Eb, Ab, Db). The instruction "a tempo" is written below the piano part, and "rit." and "p" are also present.