

B5151
141

HARLEM ON MY MIND

SAM H. HARRIS PRESENTS

"AS THOUSANDS CHEER"

A NEW REVUE

LYRICS AND MUSIC BY
IRVING BERLIN

SKETCHES BY
MOSS HART

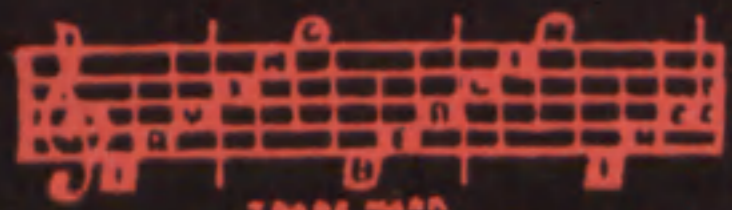
STAGED BY
HASSARD SHORT

SCENERY DESIGNED BY
ALBERT JOHNSTON

DANCES CREATED AND ARRANGED BY
CHARLES WEIDMAN



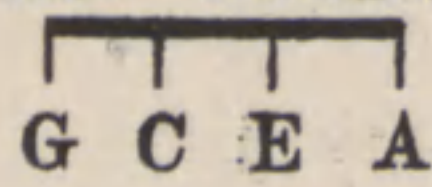
Irving Berlin, Inc.
MUSIC PUBLISHERS
1607 Broadway New York



MADE IN U.S.A.

HARLEM ON MY MIND

*) Tune Ukulele



By
IRVING BERLIN

Slow Blues Tempo

*) Letters over diagrams are names of the chords in original key and are adaptable to Banjo or Guitar.

VOICE

Em-ralds in my brace-lets, And dia-monds in my rings, A

Ri-vi-era cha-te-au, and a lot of oth-er things, And I'm blue so

blue am I. Lots of read-y mon-ey, In

B \flat B \flat mi C7 F C7 F C7 F C9aug F7 C9aug 3

sev - en dif - f'rent banks, I count - ed up this morn - ing, it's a - bout a mil - lion francs, And I'm

F7 D7 G9 C7 Cdim Fmi C

blue, so blue, and I know why: _____

CHORUS C^{aug} F Ddim C7 F Gmi Ddim F

I've got HAR-LEM ON MY MIND, — I've a long - ing to be

Gmi C7 F D7 Gmi C7 F G7

low - down, And my "par - lez - vous," Will not ring true, With HAR-LEM ON MY

WARNING! Any one who copies the words or music of this song, or any portion thereof, will be criminally prosecuted, under section 28 of the United States Copyright Law, and section 441^a of the New York Penal Law.

C7 Caug F Ddim C7

MIND. I've been wined and I've been dined, — But I'm

F Gmi Ddim F Gmi C7 F D7 Gmi Bbmi

head-ing for a show-down, 'Cause I can't go on, From night to dawn, With

F G7 C7 F F D9 F7

HAR-LEM ON MY MIND. I go to sup-per with a

E7 Ami D9

French Mar-quis, Each eve-ning aft-er the show, —

C Ab7 G7 C7

My lips be - gin to whis - per "Mon Che - ri," But my heart keeps sing - ing

Ebmi C7 Caug F Ddim C7

"Hi - de - ho" I've be - come too darn re - fined, ——— And at

F Gmi Ddim F Gmi C7 F Ebmi G9 Gb9

night I hate to go down, To the high - fa - lut - in' flat that La - dy

F9 Bb Bbmi F G7 C7 F Ebmi C7 F Bbmi F

Men - del de - signed, With HAR - LEM ON MY MIND. I've got MIND.




SUPPER TIME

FROM THE NEW REVUE

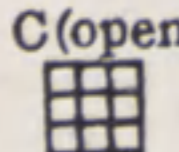


“As Thousands Cheer”

By
IRVING BERLIN


VOICE     

SUP - PER TIME, — I should set the tab - le, 'Cause it's

mf

SUP - PER TIME, Some-how I'm not ab - le, 'Cause that man o' - mine,

Ain't com - in' home no more.



Copyright 1933 by IRVING BERLIN INC., 1607 Broadway, N.Y.C.
International Copyright Secured. Made in U.S.A. All Rights Reserved.

COPIES ON SALE WHEREVER MUSIC IS SOLD
This Number can also be had for your Phonograph and Player Piano