

FOLLOW THE FOLD

L826
29

by FRANK LOESSER



FEUER AND MARTIN present

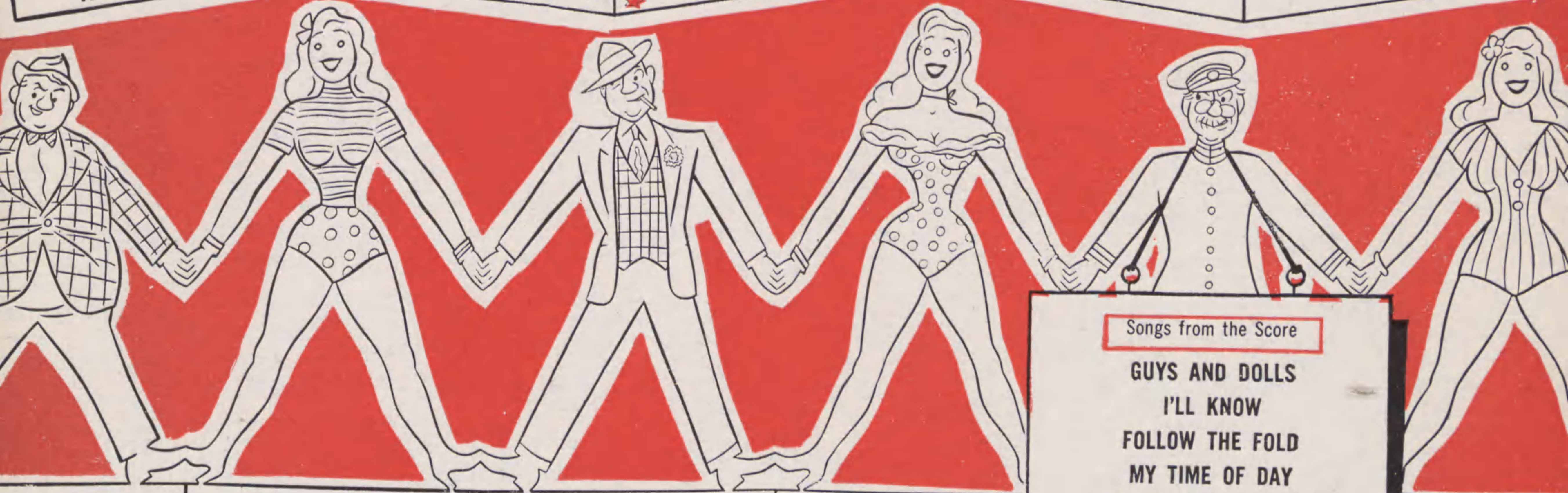
GUYS & DOLLS

A MUSICAL FABLE OF BROADWAY

Based on a story
and characters by
DAMON RUNYON

Music and Lyrics by
FRANK LOESSER

Staged by
GEORGE S. KAUFMAN



Book by

JO SWERLING and ABE BURROWS

Dances and musical
numbers staged by
MICHAEL KIDD

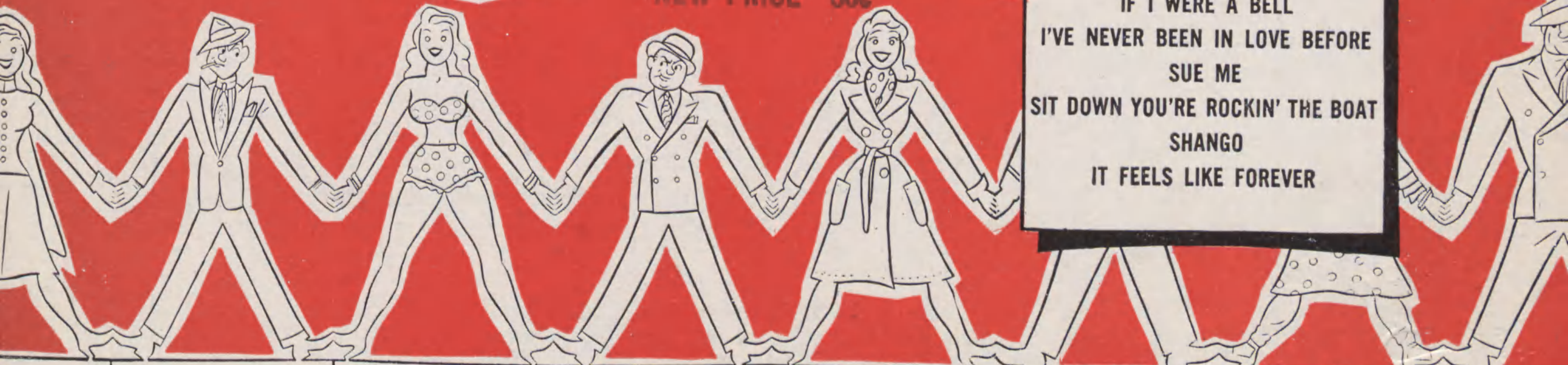
Settings and
lighting by
JO MIELZINER

Costumes by
ALVIN COLT

Songs from the Score

- GUYS AND DOLLS
- I'LL KNOW
- FOLLOW THE FOLD
- MY TIME OF DAY
- FUGUE FOR TINHORNS
- TRAVELING LIGHT
- LUCK BE A LADY
- MORE I CANNOT WISH YOU
- A BUSHEL AND A PECK
- IF I WERE A BELL
- I'VE NEVER BEEN IN LOVE BEFORE
- SUE ME
- SIT DOWN YOU'RE ROCKIN' THE BOAT
- SHANGO
- IT FEELS LIKE FOREVER

NEW PRICE 60c



Musical Director
IRVING ACTMAN

Orchestral
Arrangements by
GEORGE BASSMAN

Vocal Arrangements
and Direction by
HERBERT GREENE

SUSAN PUBLICATIONS, INC.
EDWIN H. MORRIS AND COMPANY, INC.

Sole Selling Agents

1619 BROADWAY • NEW YORK 19, N. Y.

FOLLOW THE FOLD

From the Broadway Production "GUYS and DOLLS"

By **FRANK LOESSER**

TUNE UKULELE A D F# B

Slowly

mp

G D7 G D7

Fol - low the fold and stray no more, stray no more,

mp

G D7

stray no more Put down the bot - tle and we'll say no more Fol - low,

G C D7 G D7 G

fol - low the fold Fol - low the fold and stray no

(Optional 2nd Voice) Be - fore you take an - oth - er swal - low

D7 G

more, stray no more, stray no more Tear up your



Copyright 1950 by Frank Loesser
 Rights throughout the world controlled by Susan Publications, Inc.
 Sole Selling Agent: EDWIN H. MORRIS & COMPANY, Inc., 1619 Broadway, New York 19, N. Y.
 International Copyright Secured Engraved & Printed in U. S. A.
 All Rights Reserved Including Public Performance For Profit

pok-er deck and play no more Fol - low fol - low the fold _____ To the

mea - dow _____ where the sun shines _____ out of the dark - ness _____ And the
 (Optional 2nd Voice) The

cold. _____ Fol - low the fold and stray no more,
 sin and shame in which you wal - low

rit. *a tempo*

stray no more, stray no more If you're a sin - ner and you

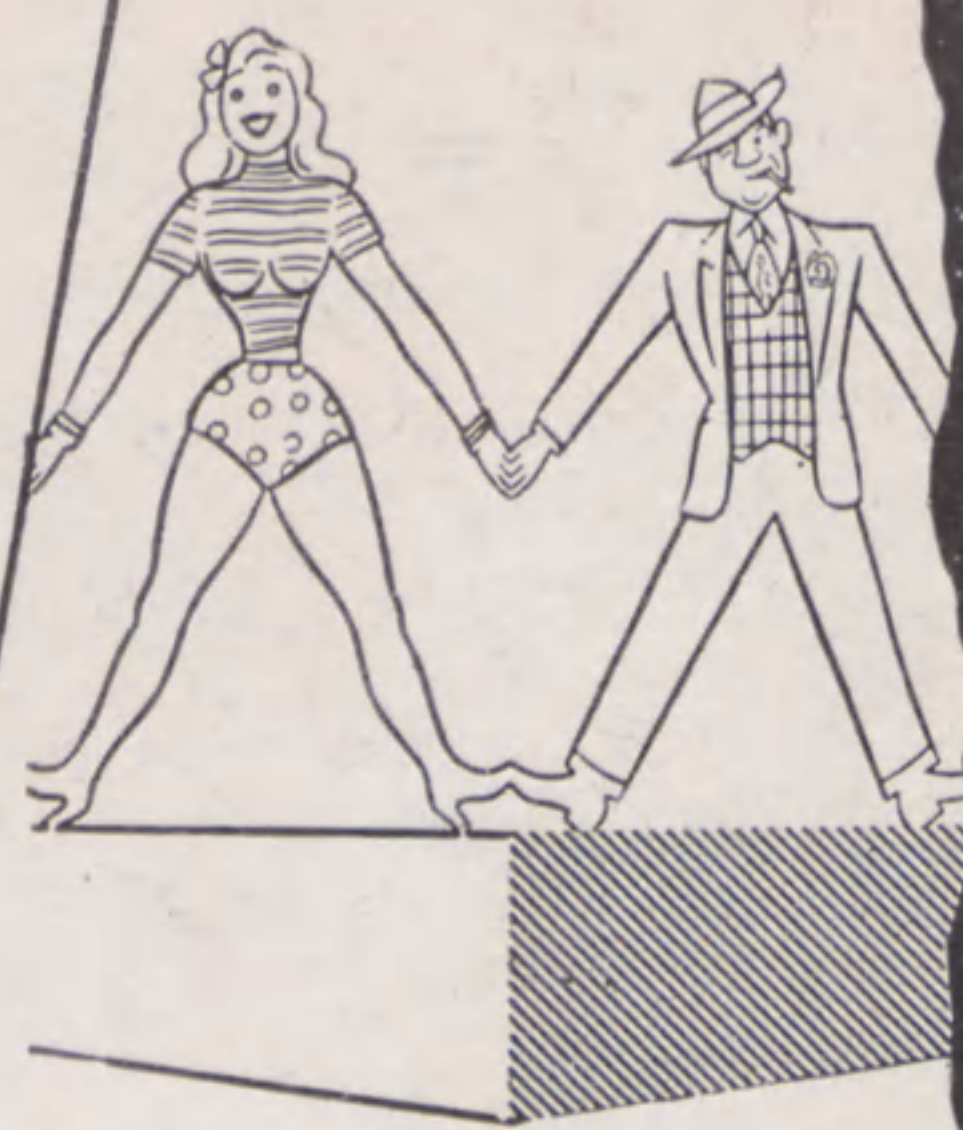
pray no more Fol - low, fol - low the fold. _____

rit.

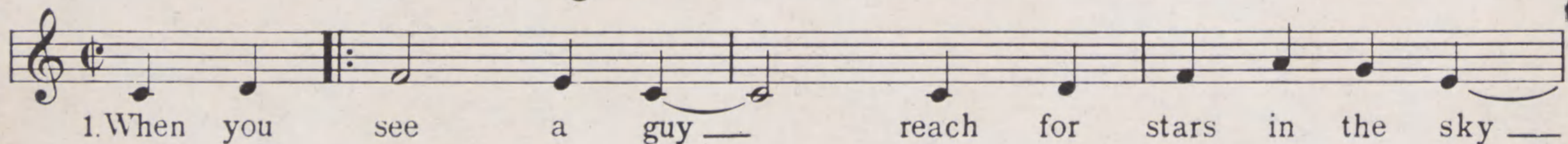
Songs from the Score

GUYS & Dolls

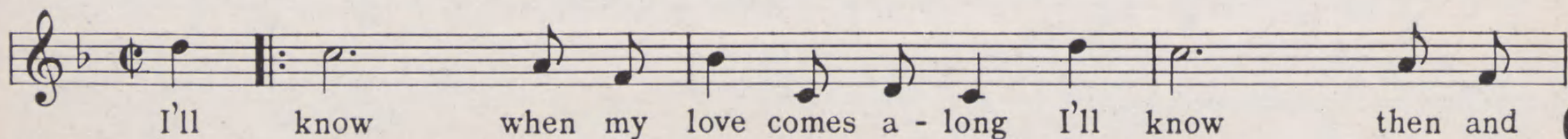
A MUSICAL FABLE OF BROADWAY
LYRICS AND MUSIC BY
FRANK LOESSER



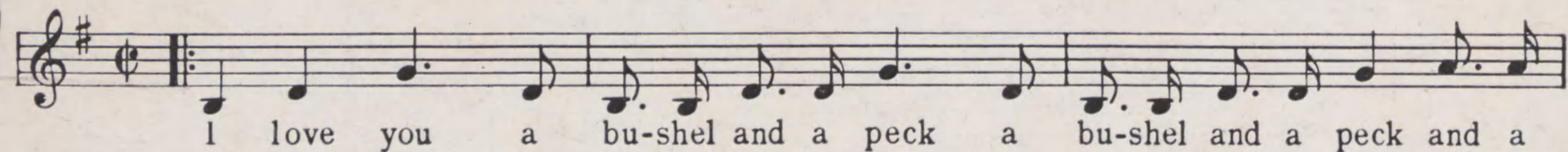
Guys And Dolls



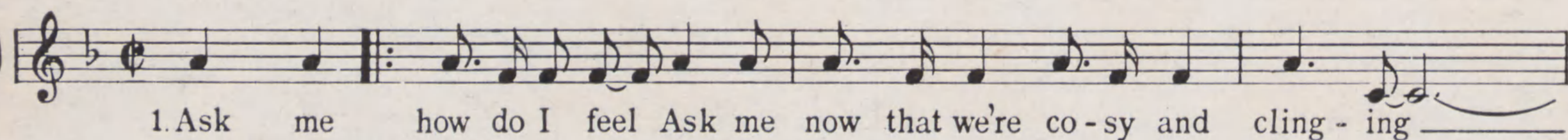
I'll Know



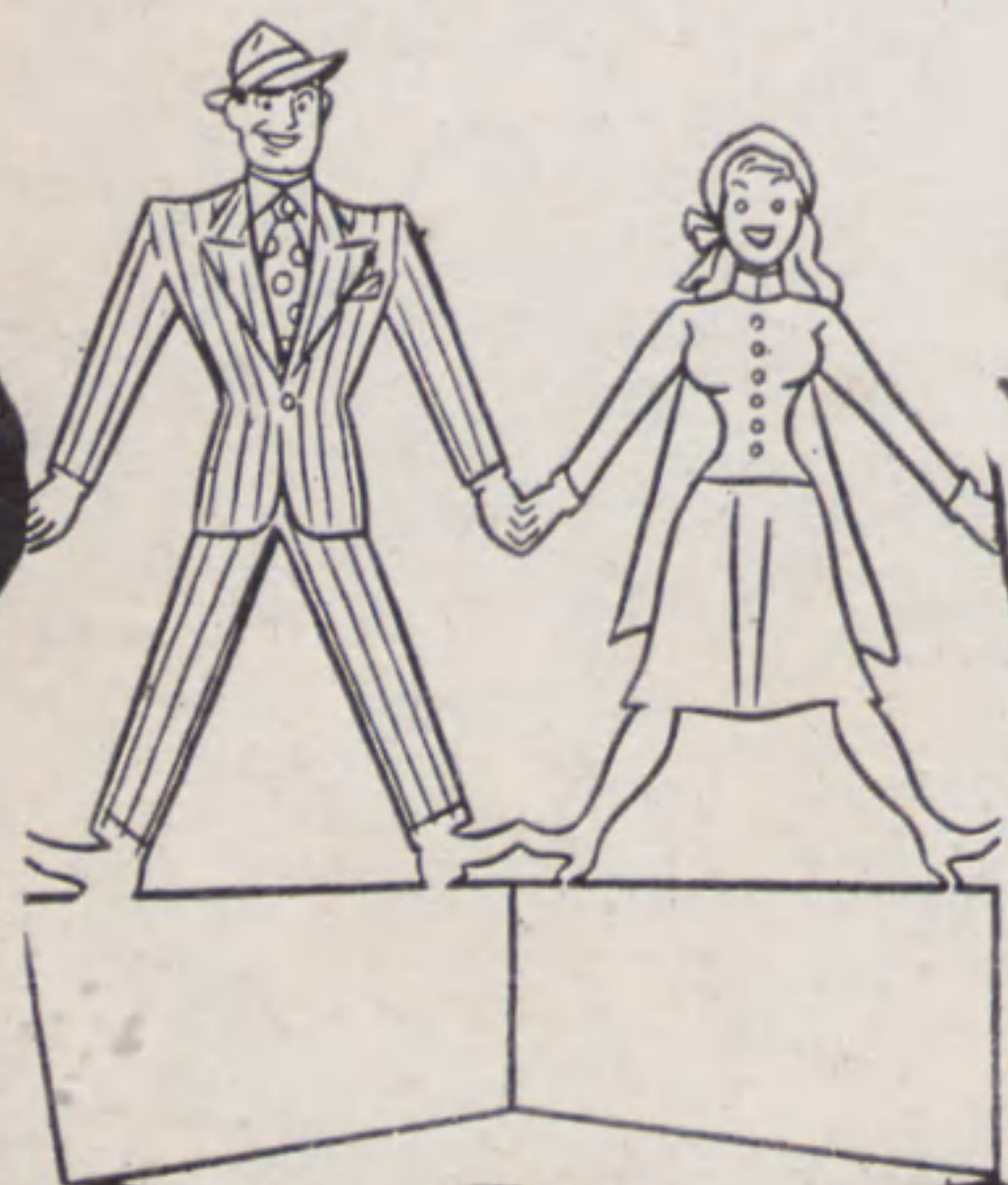
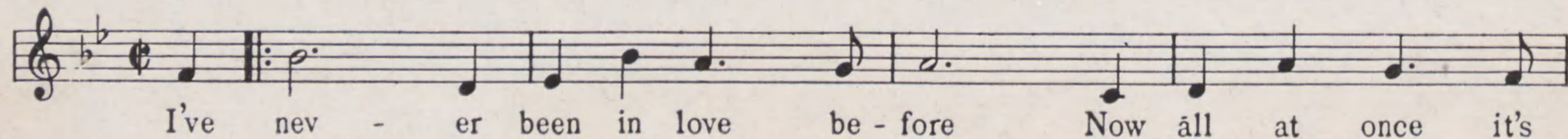
A Bushel And A Peck



If I Were A Bell



I've Never Been In Love Before



SUSAN PUBLICATIONS, INC.

EDWIN H. MORRIS AND COMPANY, INC.

Sole Selling Agents

1619 BROADWAY

NEW YORK 19, N. Y.