

by **FRANK LOESSER**



FEUER AND MARTIN present

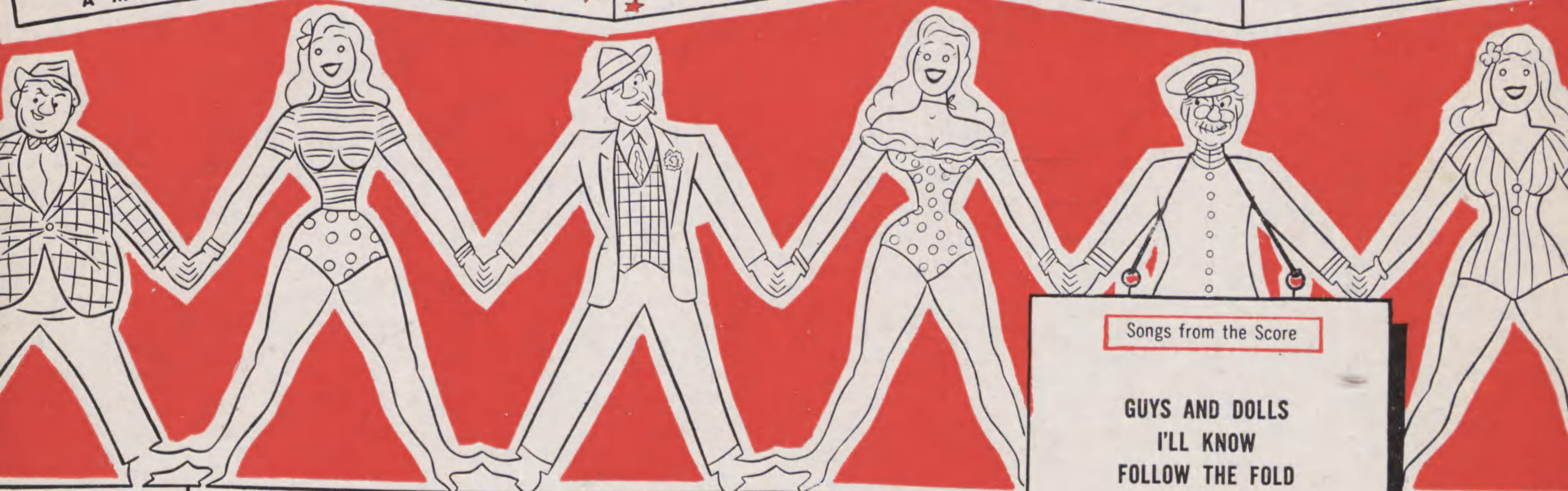
# GUYS & Dolls

A MUSICAL FABLE OF BROADWAY

Based on a story  
and characters by  
**DAMON RUNYON**

Music and Lyrics by  
**FRANK LOESSER**

Staged by  
**GEORGE S. KAUFMAN**



Book by

**JO SWERLING and ABE BURROWS**

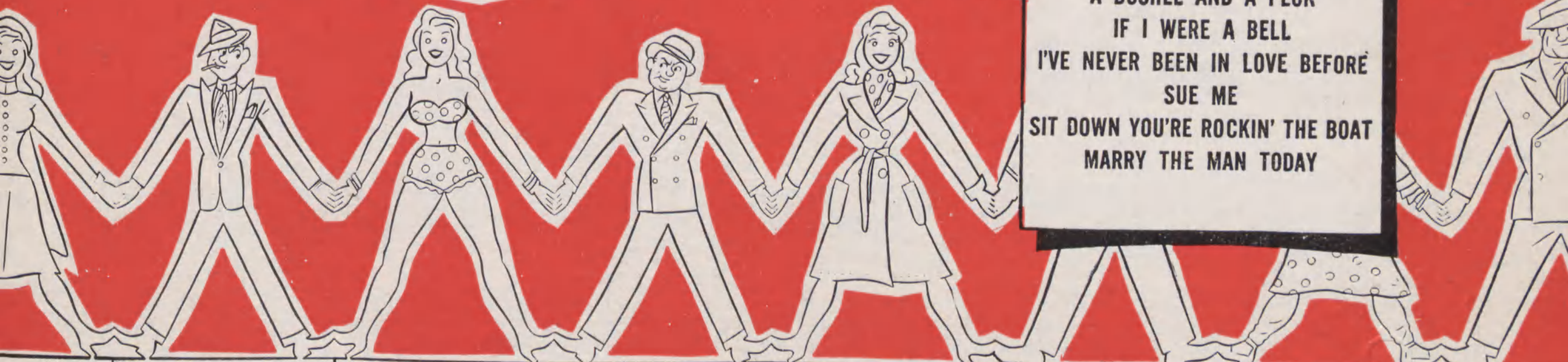
Dances and musical  
numbers staged by  
**MICHAEL KIDD**

Settings and  
lighting by  
**JO MIELZINER**

Costumes by  
**ALVIN COLT**

Songs from the Score

**GUYS AND DOLLS  
I'LL KNOW  
FOLLOW THE FOLD  
MY TIME OF DAY  
THREE CORNERED TUNE  
ADELAIDE'S LAMENT  
LUCK BE A LADY  
MORE I CANNOT WISH YOU  
A BUSHEL AND A PECK  
IF I WERE A BELL  
I'VE NEVER BEEN IN LOVE BEFORE  
SUE ME  
SIT DOWN YOU'RE ROCKIN' THE BOAT  
MARRY THE MAN TODAY**



Musical Director  
**IRVING ACTMAN**

Orchestral  
Arrangements by  
**GEORGE BASSMAN**

Vocal Arrangements  
and Direction by  
**HERBERT GREENE**

SUSAN PUBLICATIONS, INC.  
**EDWIN H. MORRIS AND COMPANY, INC.**  
Sole Selling Agents

1619 BROADWAY • NEW YORK 19, N. Y.



# A BUSHEL AND A PECK

From the Broadway Production "GUYS and DOLLS"

TUNE UKULELE A D F# B

By FRANK LOESSER

Light Bounce Tempo

mp

Light Bounce Tempo

G D7 G D7 G A7

I love you a bu-shel and a peck a bu-shel and a peck and a  
 I love you a bu-shel and a peck a bu-shel and a peck tho' you  
 I love you a bu-shel and a peck a bu-shel and a peck and it

mp

D D7 G Em7

hug a-round the neck Hug a-round the neck and a bar-rel and a heap  
 make my heart a wreck Make my heart a wreck and you make my life a mess  
 beats me all to heck Beats me all to heck how I'll ev - er tend the farm

A7 D (Blast) G9

Bar - rel and a heap and I'm talk - in' in my sleep a - bout  
 Make my life a mess yes a mess of hap - pi - ness a - bout  
 Ev - er tend the farm when I wan - na keep my arm a - bout



Copyright 1950 by Frank Loesser  
 Rights throughout the world controlled by Susan Publications, Inc.  
 Sole Selling Agent EDWIN H. MORRIS & COMPANY, Inc., 1619 Broadway, New York 19, N.Y.  
 International Copyright Secured Engraved & Printed in U. S. A.  
 All Rights Reserved Including Public Performance For Profit



C A7(b9) F#7(b9) G D+ Dm D+

you \_\_\_\_\_ a-bout you \_\_\_\_\_ 'Cause

*mp*

G D7 G D7 G D7

I love you a bu-shel and a peck y' bet your pur-ty neck I do\_

G D7 G7 C

(Optional Duet)

Doo - dle oo - dle oo - dle Doo - dle oo - dle oo - dle a -

G D7 1. G D7 2. G

doo - dle oo - dle oo - dle ooo. —

*gva...*

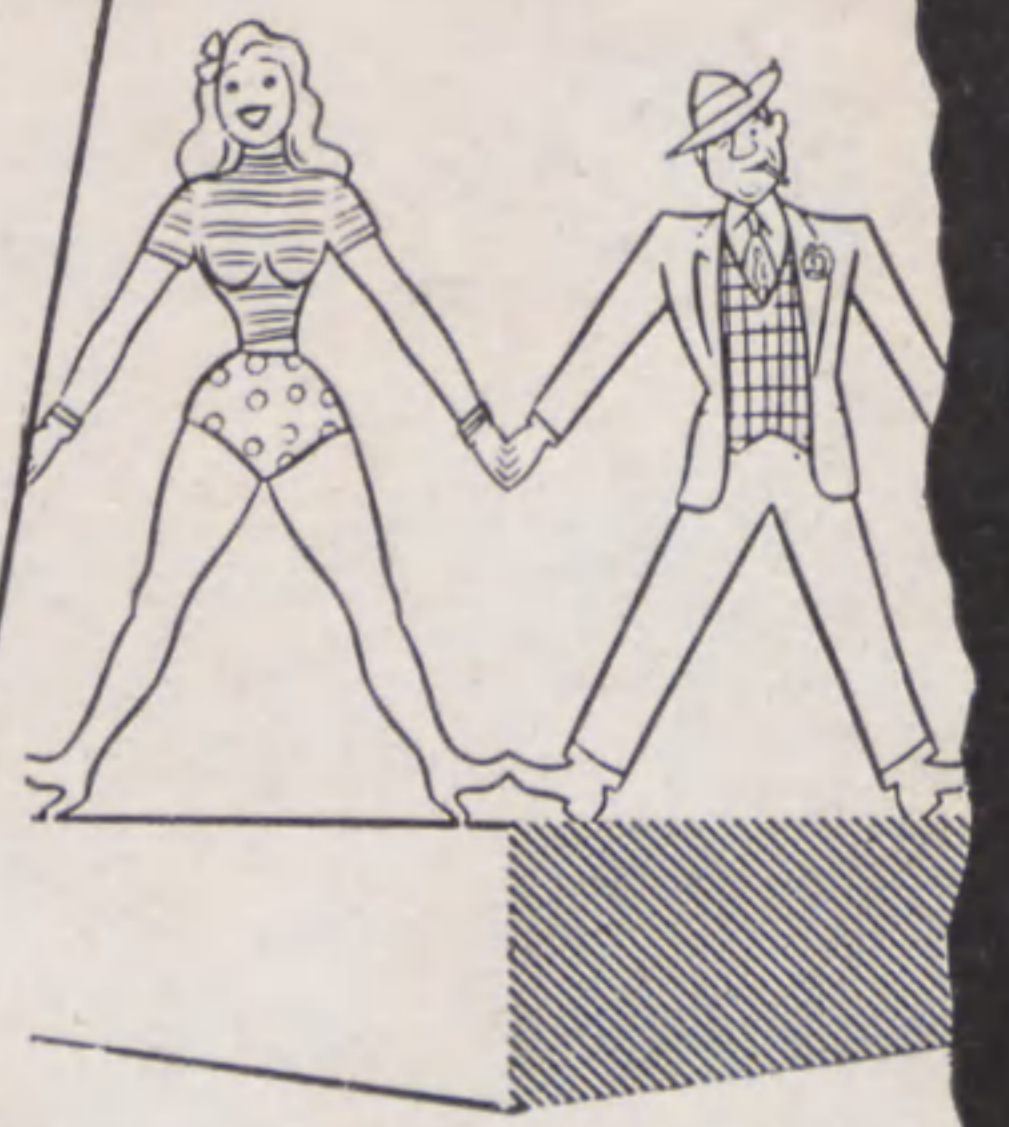




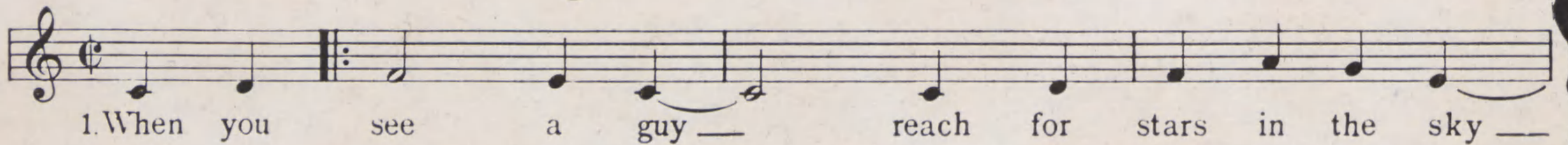
Songs from the Score

# GUYS & Dolls

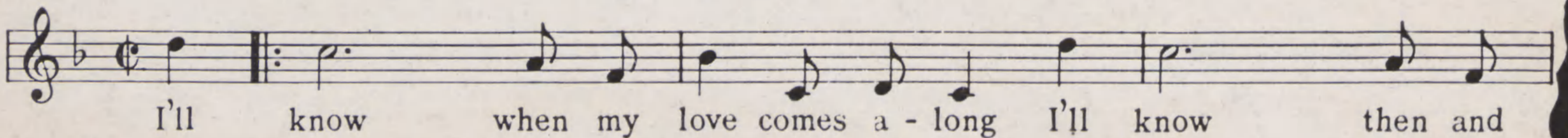
A MUSICAL FABLE OF BROADWAY  
LYRICS AND MUSIC BY  
**FRANK LOESSER**



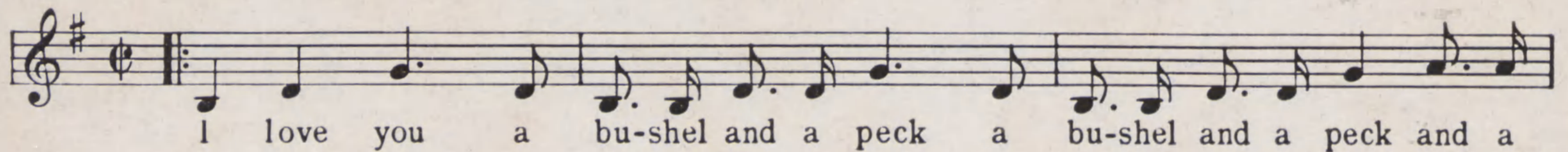
## Guys And Dolls



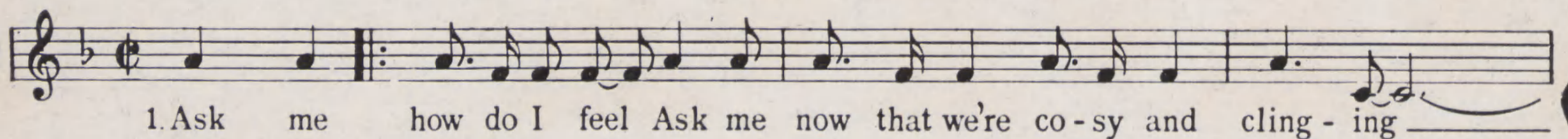
## I'll Know



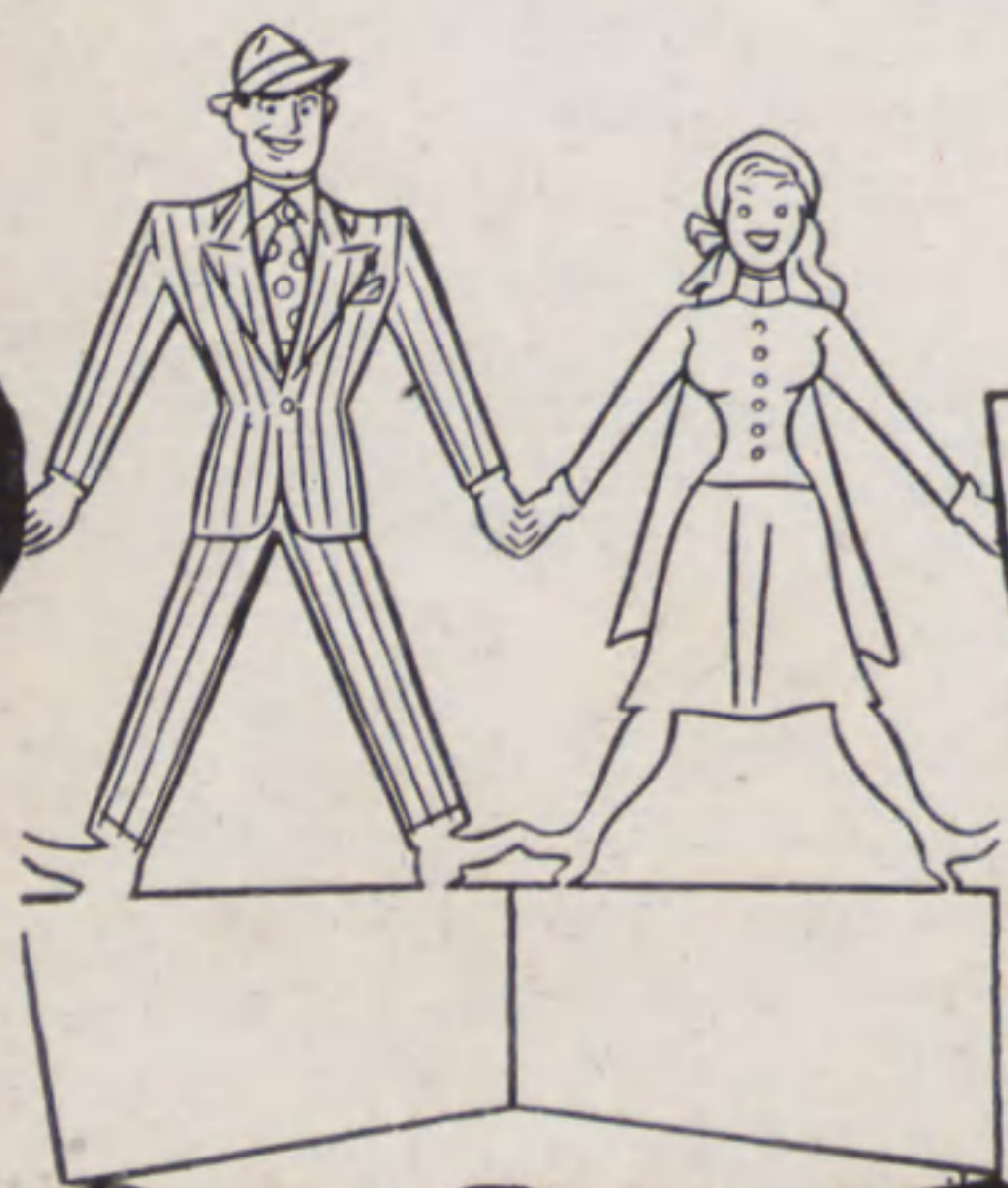
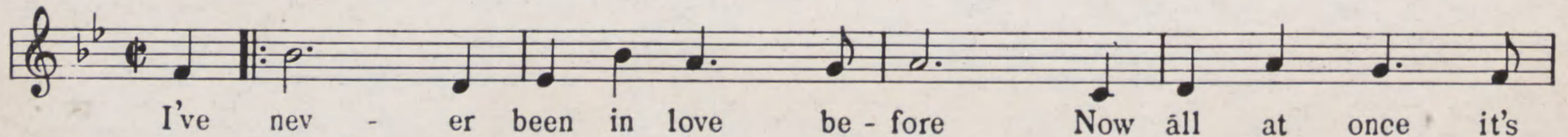
## A Bushel And A Peck



## If I Were A Bell



## I've Never Been In Love Before



SUSAN PUBLICATIONS, INC.  
**EDWIN H. MORRIS AND COMPANY, INC.**  
Sole Selling Agents  
1619 BROADWAY • NEW YORK 19, N. Y.

