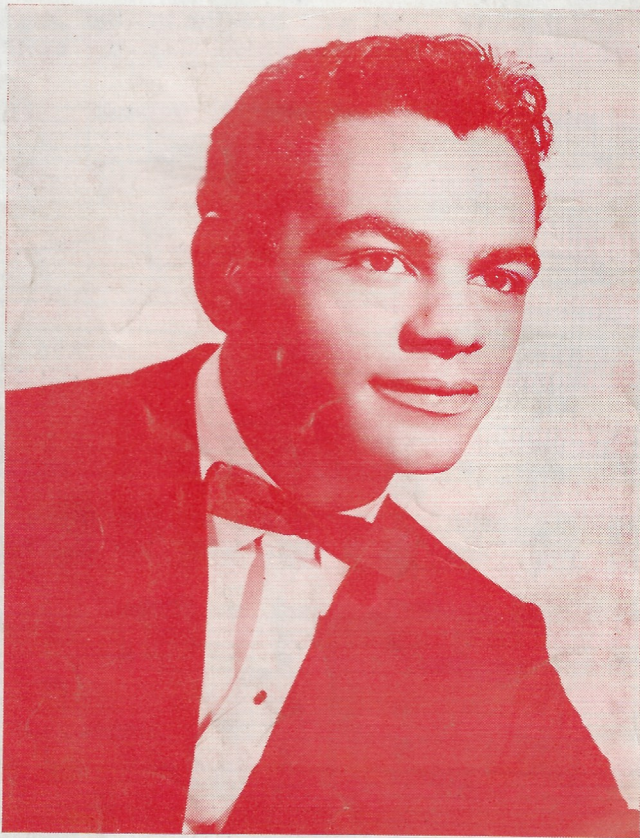


# WONDERFUL! WONDERFUL!

Lyric by BEN RALEIGH

Music by SHERMAN EDWARDS



JOHNNY MATHIS

50c

GORDON V. THOMPSON LIMITED  
32 Alcorn Ave., Toronto

By arrangement with  
EDWARD B. MARKS MUSIC CORPORATION,  
R.C.A. Bldg. New York, N.Y.

# Wonderful! Wonderful!

Lyric by  
BEN RALEIGH

Tune Ukulele  
A D F# B

Music by  
SHERMAN EDWARDS

Legato

Piano *mf*

The piano introduction consists of two staves. The right hand plays a series of chords in a legato style, while the left hand plays a simple bass line. The tempo is marked 'Piano' and the dynamics are 'mf'.

REFRAIN \* Bb6 Eb6 Bb6 Eb6 Bb6 Eb6

Some-times we walk hand in hand by the sea And we breathe in the cool salt-y  
Some-times we stand on the top of a hill And we gaze at the earth and the

The first part of the refrain is written for voice and piano. The voice part has two lines of lyrics. The piano accompaniment is in the right hand, with a bass line in the left hand. Chord diagrams for Bb6, Eb6, Bb6, Eb6, Bb6, and Eb6 are provided above the staff.

Bb6 Eb6 Ab6 Eb6 Ab6

air;  
sky; You turn to me with a kiss in your eyes And my  
I turn to you and you melt in my arms, There we

The second part of the refrain continues the voice and piano accompaniment. Chord diagrams for Bb6, Eb6, Ab6, Eb6, and Ab6 are provided above the staff.

Eb Cm7 Cm6 D7 Gm G7

heart feels a thrill be-yond com - pare!  
are, dar-ling, on - ly you and I! Then your lips cling to mine, it's  
What a mo - ment to share, it's

The final part of the refrain concludes the voice and piano accompaniment. Chord diagrams for Eb, Cm7, Cm6, D7, Gm, and G7 are provided above the staff.

\*Symbols for Guitar, Diagrams for Ukulele.

Cm7

Bdim Cm Ddim Ebm6

1. Bb

C9

F7

WON - DER - FUL! WON - DER - FUL!  
WON - DER - FUL! WON - DER - FUL!

Oh, so won - der - ful, my love!

2.

Bb

Cm7

F7

Bb

Cm7

C#dim

Bb

Ebmaj7

Eb6

Fm7

Bb7

Oh, so won - der - ful, my love!

This world is full of won - d'rous things, it's

Eb

Gm7

Eb6

C7

F7

true,

But they would - n't have much mean - ing with - out you.

Bb6

Eb6

Bb6

Eb6

Bb6

Eb6

Some qui - et eve - nings I sit by your side And we're lost in a world of our

Bb6

Eb6

Ab6

Eb6

Ab6

own;

I feel the glow of your un - spo - ken love, I'm a -

Eb

Cm7

Cm6

D7

Gm

G7

ware of the treas - ure that I own.

And I say to my - self, it's

Cm7

Bdim

Cm

Ddim

Ebm6

Bb

Cm7

F7

1.

Bb

Bb6

Eb6

§

WON - DER - FUL! WON - DER - FUL!

Oh, so won - der - ful, my love!

*D. S. al Fine*

2.

Bb

Bb6

Eb6

Bb

Bb6

Eb6

Bb

*Fine*

love!

*dim.*

*pp*

*Fine*