

WITH UKULELE ARRANGEMENT

SCHOOL DAY SWEETHEARTS

WORDS & MUSIC
by
GLEN EDWARDS



Featured by
BELL & COATES



Sherman,  & Co.
SAN FRANCISCO

P. G. GRIFFITH



WHY DO I ALWAYS REMEMBER

MAURICE J. GUNSKY
MERTON H. BORIES
JACK COAKLEY

Chorus 

Why do I al - ways re - mem - ber, When I'm try - ing so

hard to for - get. I know I've lost you for -

p *f*

Copyright MCMXXVI by Sherman, Clay & Co., San Francisco
International Copyright Secured and Reserved
Keith Prowse & Co. Ltd., London, W. I. — Allan's Proprietary, Ltd., Melbourne, Australia

Ships That Pass In The Night

Lyric by
HARRY D. KERR

Music by
W. H. SMITH
& EARL BURTNETT

Chorus   

Like the ships that pass in the night, — Your

love is gone with dawn's ear - ly light, — Just

p *f*

Copyright MCMXXV by Sherman, Clay & Co., San Francisco
International Copyright Secured and Reserved
Keith Prowse & Co. Ltd., London, W. I. — Allan's Proprietary, Ltd., Melbourne, Australia

Copies for sale wherever music is sold.
These numbers can also be had for your phonograph and player piano.

Sherman,  & Co.
SAN FRANCISCO

Tune Uke as follows:

Bb Eb G C



School Day Sweethearts

Words and Music by
GLEN EDWARDS

Moderato

mf

Bb C# dim. Bb C# dim. Bb C7 F7 Bb G dim.

School ways, love days, I'm long - ing, dear, for
It seems in dreams I'm roam - ing, dear, with

mp

F7 D dim. F7

you, — Back to by - gone days when you
you, In the gloam - ing, just as we

Eb F7 Bb D7 Gm D7 Gm

loved me too. — When we both were kids at school,
used to do. — In the moon-light's mel - low glow,

C7 F C7 F C7 C dim.

There we vowed we ne'er would part; Let us live the
 There you gave your heart to me; Let's go back to

C7 C dim. C7 F7 F Aug.

Gold - en Rule and be my old sweet - heart.
 long a - go, to days that used to be.

riten.

CHORUS Bb G Aug. G7 C7

a tempo

Can't we be the same school-day sweet - hearts? Let us wan-der back once

a tempo
mf-f

C7 F7 Gm F7

more, — Thru the lit - tle lane where we part - ed, ✓

Bb C# dim. Bb

Back to child-hood days of yore. ——— You were my own

Bb G Aug. G7 C7

sun - bon - net sweet - heart, In your ging - ham gown some

C7 Cm Eb Ebm Bb G7

how. ——— When I looked at you I knew you loved me too,

C7 Ebm F7 Bb C# dim. Eb F7 Bb F Aug. Bb

Let's be school-day sweet - hearts now. ——— now. ———

ADIÓS *by the Writer of "LINGER AWHILE"*

Chorus

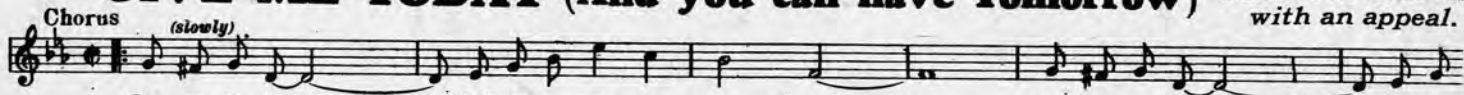


A - di - os, _____ A - di - os, _____ Come and kiss me, _____

Copyright MCMXXVI by Sherman, Clay & Co., San Francisco

GIVE ME TODAY (And you can have Tomorrow) *Ballad Fox Trot Hit with an appeal.*

Chorus

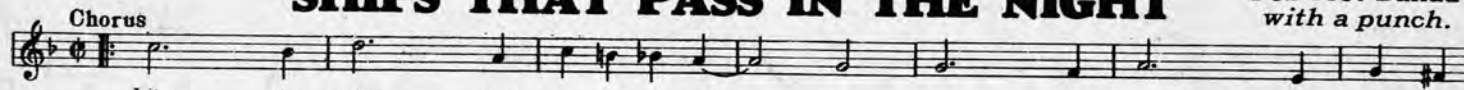


Give me to - day _____ And you can have to - mor - row _____ Give me to - day _____ with you

Copyright MCMXXVI by Sherman, Clay & Co., San Francisco

SHIPS THAT PASS IN THE NIGHT *Fox Trot Ballad with a punch.*

Chorus



Like the ships that pass in the night, — Your love is gone with dawn's

Copyright MCMXXV by Sherman, Clay & Co., San Francisco

WHY DO I ALWAYS REMEMBER *Melodious Fox Trot Hit.*

Chorus

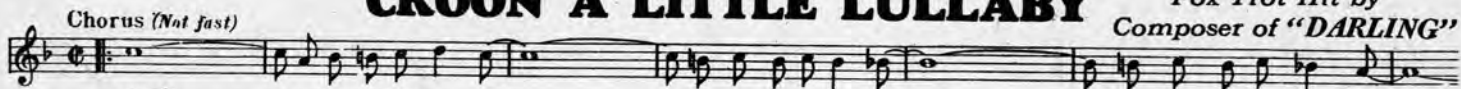


Why do I al - ways re - mem - ber, When I'm try - ing so hard to for - get. _____ I

Copyright MCMXXVI by Sherman, Clay & Co., San Francisco

CROON A LITTLE LULLABY *Fox Trot Hit by Composer of "DARLING"*

Chorus (Not fast)

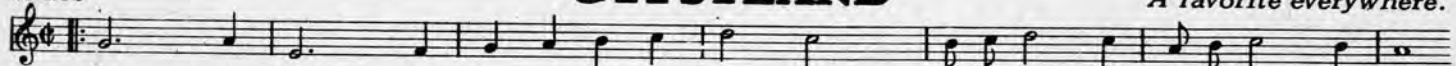


Croon _____ a lit - tle lull - a - by _____ A dream - y mel - o - dy _____ That brings a mem - o - ry _____

Copyright MCMXXV by Sherman, Clay & Co., San Francisco

GYPSYLAND *A favorite everywhere.*

CHORUS

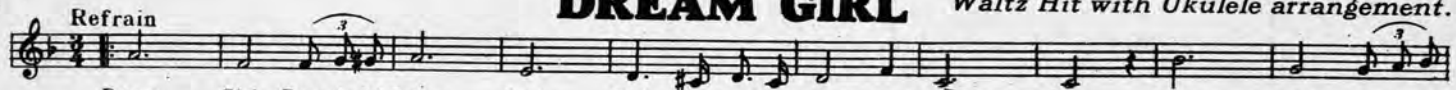


Gyp - sy - land, that's where I want to wan - der, Gyp - sy - land, that gold - en strand out - yon

Copyright MCMXXV by Merit Music Makers
Copyright transferred MCMXXV to Sherman, Clay & Co., San Francisco

DREAM GIRL *Waltz Hit with Ukulele arrangement.*

Refrain



Dream Girl, Beau - ti - ful Dream Girl, Can't you hear me call - ing you, _____ Moon - - light, Beau - ti - ful

Copyright MCMXXIV by Cahoon & Pyper
Copyright transferred MCMXXV to Sherman, Clay & Co., San Francisco

CLOSE YOUR EYES *Waltz Hit of a Decade.*



Close your eyes _____ Close your eyes in sleep _____ Leave your cares be - hind you

Copyright MCMXXV by Sherman, Clay & Co., San Francisco

HAWAIIAN LOVE *Best since "ALOHA OE"*

Chorus



Ha - wai - ian Love, 'neath skies of blue, From Heav'n a - bove so true, Your charms are call - ing me Be - side your silv - ring

Copyright MCMXXIV by Jack Heitzel and Joseph Lopes
Copyright transferred MCMXXV to Sherman, Clay & Co., San Francisco

ALWAYS YOU'RE NEAR *Beautiful Waltz Ballad.*

CHORUS



Al - ways, _____ Al - ways you're near, For in all my dreams, won - der - ful

Copyright MCMXXIV by Ella Mae Goodram
Copyright transferred MCMXXV to Sherman, Clay & Co., San Francisco

Copies for sale
wherever music is sold.

PUBLISHED BY
Sherman,  & Co.
SAN FRANCISCO

These numbers can also
be had for your phonograph
and player piano.