

# Oft in the stilly Night

## SCOTCH AIR

From

# Moore's National Melodies.

Arranged by

J. STEVENSON, Mus. Doc.

New York, Pub'd by N. Thurston.

With  
Melancholy  
Expression.

pp

The piano introduction consists of two staves in 2/4 time. The right hand features a series of sixteenth-note chords, while the left hand provides a simple harmonic accompaniment with quarter notes.

Oft in the stilly night, Ere slumbers chain has bound me, Fond mem'ry

p

The first line of the song is set in 2/4 time. It includes a vocal line with a treble clef and a piano accompaniment with a grand staff (treble and bass clefs). The piano part features a steady accompaniment of chords.

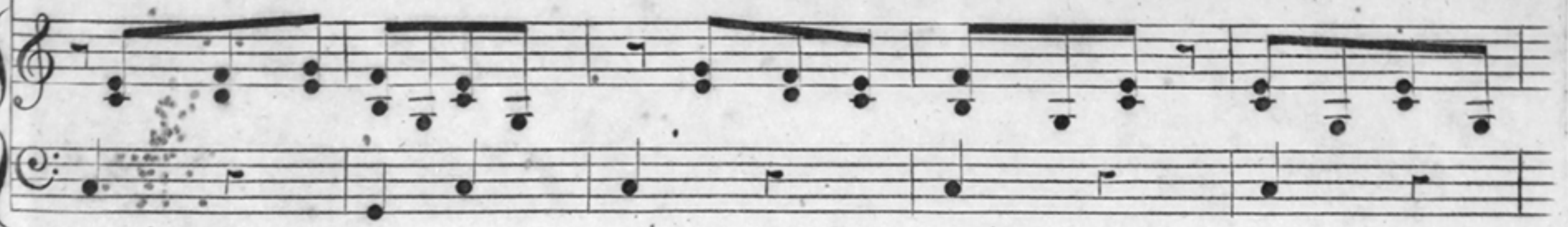
brings the light Of other days a round me: The smiles, the tears, of childhood's years, The

The second line of the song continues the vocal and piano parts from the first line, maintaining the same 2/4 time signature and melodic structure.





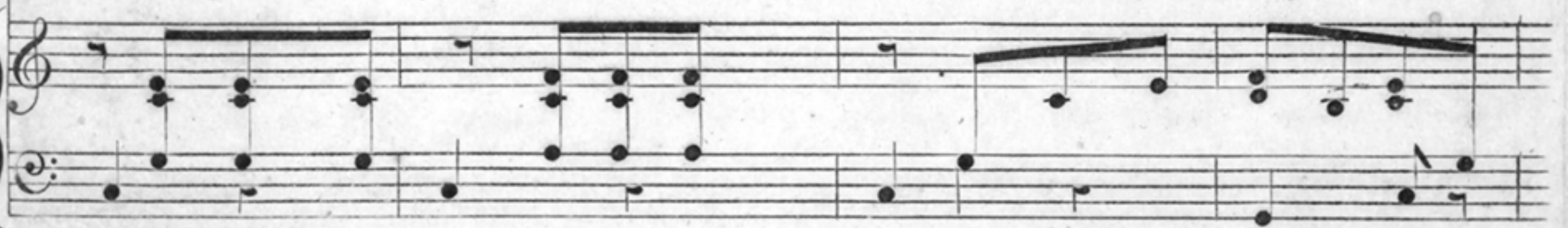
words of love then spoken, The eyes, that shone, now dimm'd and gone; The cheerful hearts now



bro-ken! Thus in the stil-ly night, Ere slumbers' chain has bound me,



Sad mem'ry brings the light, Of oth-er days a-round me.



When I remember all  
The friends, so link'd together,  
I've seen arond me fall,  
Like leaves in wintry weather;  
I feel like one, who treads alone  
Some banquet-hall deserted,  
Whose lights are fled, whose garland's dead,  
And all, but he, departed!  
Thus in the stilly night, &c.