

TILL THERE WAS YOU

By MEREDITH WILLSON

D7636
1861

KERMIT BLOOMGARDEN
WITH HERBERT GREENE
IN ASSOCIATION WITH FRANK PRODUCTIONS INC.
Presents

THE MUSIC MAN

A New Musical Comedy

STARRING

ROBERT PRESTON

BOOK, MUSIC & LYRICS BY

MEREDITH WILLSON

STORY BY MEREDITH WILLSON & FRANKLIN LACEY

WITH

BARBARA COOK · DAVID BURNS · PERT KELTON

IGGIE WOLFINGTON · THE BUFFALO BILLS · HELEN RAYMOND · PAUL REED · EDDIE HODGES

CHOREOGRAPHY BY ONNA WHITE SETTINGS & LIGHTING BY HOWARD BAY COSTUMES BY RAOUL PENE DU BOIS

ORCHESTRATIONS BY DON WALKER DANCE ARR. BY LAURENCE ROSENTHAL PRODUCTION ASSOCIATE SYLVIA DRULIE

MUSICAL DIRECTION AND VOCAL ARR. BY HERBERT GREENE

ENTIRE PRODUCTION
STAGED BY

MORTON DA COSTA

FRANK MUSIC CORP.

Sole Selling Agents: FRANK DISTRIBUTING CORP. • 119 West 57th Street • New York 19, N.Y.



Till There Was You

From the Musical Comedy "The Music Man"

By
MEREDITH WILLSON

Moderately

Piano

The piano introduction consists of two staves. The right hand plays a series of chords in a descending sequence: Bb7(b9), Eb, Edim, and Fm7. The left hand plays a simple bass line with quarter notes and rests.

Voice

The first line of the song features a voice line and piano accompaniment. The lyrics are: "There were bells on the hill, but I never heard them". The piano accompaniment includes the chords Bb7(b9), Eb, Edim, and Fm7. The piano part has a melody in the right hand and a bass line in the left hand.

The second line of the song features a voice line and piano accompaniment. The lyrics are: "ring - ing, No, I never heard them at all Till There Was". The piano accompaniment includes the chords Abm6, Eb, Gbdim, Fm7, and Bb7-9. The piano part has a melody in the right hand and a bass line in the left hand.

The third line of the song features a voice line and piano accompaniment. The lyrics are: "You. There were birds in the sky, but I". The piano accompaniment includes the chords Eb, Abmaj.7, Bb7, Eb, and Edim. The piano part has a melody in the right hand and a bass line in the left hand.

Fm7 *Abm6* *Eb* *Gbdim*

nev - er saw them wing - ing, No, I nev - er saw them at

Detailed description: This system contains the first two measures of the piece. The vocal line starts with a quarter note G4, followed by quarter notes A4 and Bb4, then a quarter rest, and finally quarter notes C5 and Bb4. The piano accompaniment features a steady bass line with chords in the right hand. A triplet of eighth notes (G4, A4, Bb4) is marked above the final measure of the system.

Fm7 *Bb7-9* *Eb* *Abmaj.7* *Eb9maj.7*

all Till There Was You. And there was

Detailed description: This system contains measures 3 through 5. The vocal line has a quarter note G4, followed by quarter notes A4 and Bb4, then a quarter rest, and finally quarter notes C5 and Bb4. The piano accompaniment continues with chords and a bass line. A triplet of eighth notes (G4, A4, Bb4) is marked above the second measure. A dynamic marking of *p* (piano) is shown with a hairpin in the piano part.

Ab *Adim* *Eb*

mu - sic and there were won - der - ful ros - es, they

Detailed description: This system contains measures 6 through 8. The vocal line has a quarter note G4, followed by quarter notes A4 and Bb4, then a quarter rest, and finally quarter notes C5 and Bb4. The piano accompaniment features chords and a bass line. A triplet of eighth notes (G4, A4, Bb4) is marked above the seventh measure. A dynamic marking of *mf* (mezzo-forte) is shown in the piano part.

C7 *+5* *Fm7* *F7*

tell me in sweet fra - grant mea - dows of

Detailed description: This system contains measures 9 through 11. The vocal line has a quarter note G4, followed by quarter notes A4 and Bb4, then a quarter rest, and finally quarter notes C5 and Bb4. The piano accompaniment features chords and a bass line. A dynamic marking of *dim.* (diminuendo) is shown in the piano part.

Bb7 Bb7+5 Bb7 Eb

dawn, and dew, There was love all a -

Edim Fm7 Abm6

round, but I nev - er heard it sing - ing, No, I

Eb Gbdim Fm7 1. Eb

nev - er heard it at all Till There Was You.

Abmaj.7 Bb7 (b9) 2. Eb Ab9maj.7 Ebmaj.7

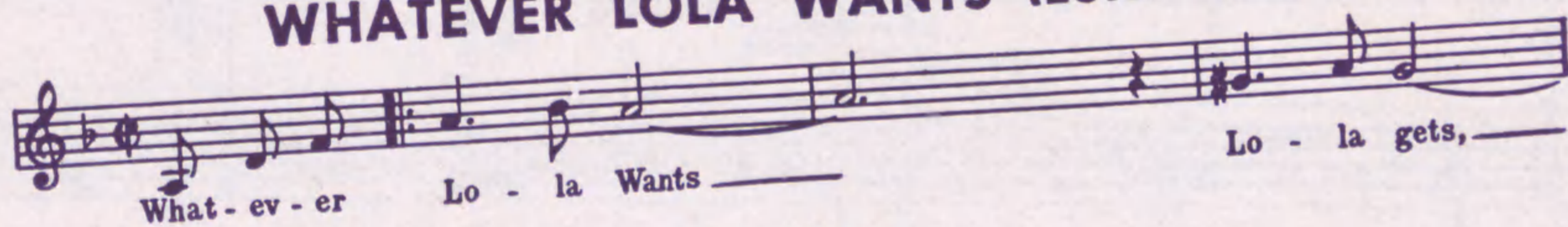
There were You.

molto rit. *pp*

Songs From the Broadway Musical
Damn Yankees

Words and Music by
RICHARD ADLER and JERRY ROSS

WHATEVER LOLA WANTS (Lola Gets)



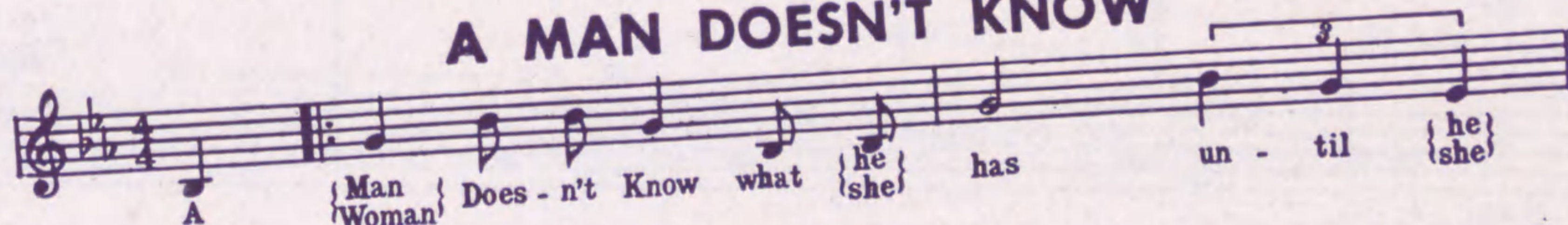
HEART



TWO LOST SOULS



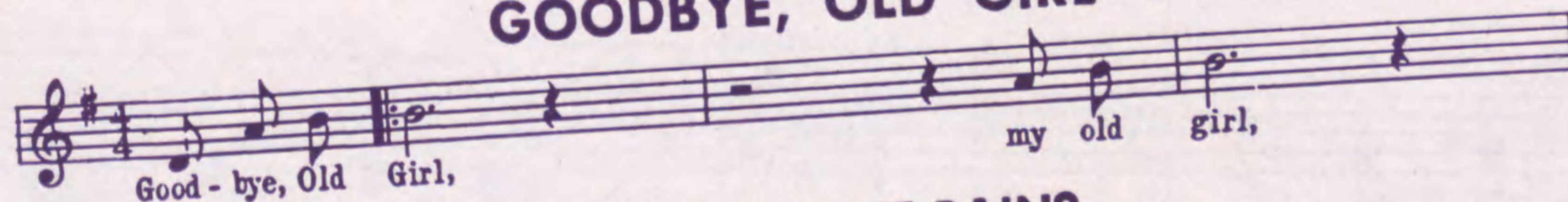
A MAN DOESN'T KNOW



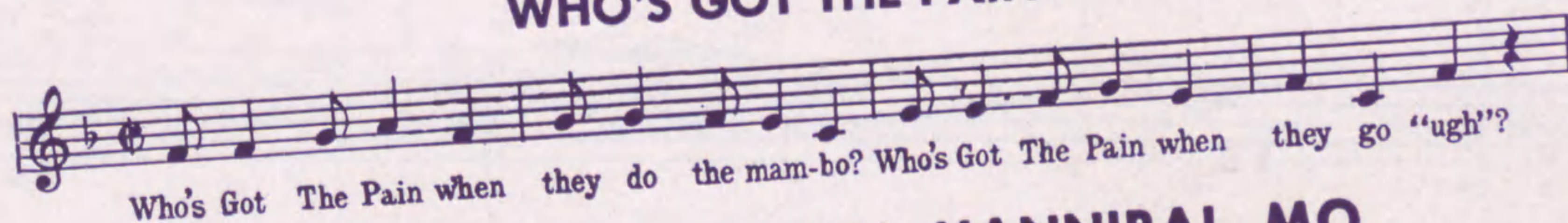
NEAR TO YOU



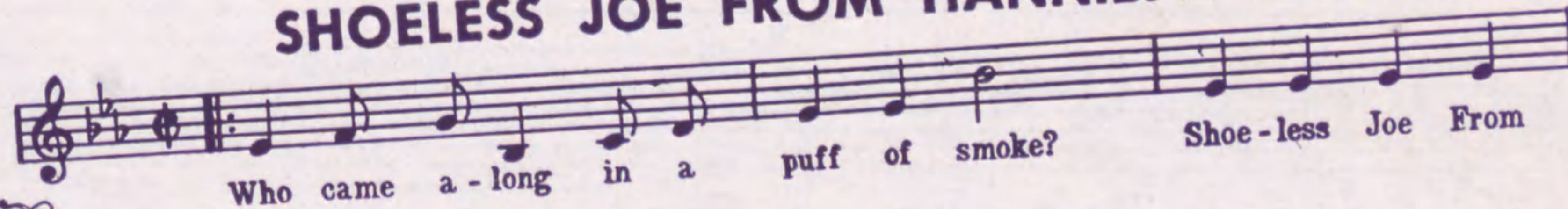
GOODBYE, OLD GIRL



WHO'S GOT THE PAIN?



SHOELESS JOE FROM HANNIBAL MO.



Copyright 1955 by

FRANK MUSIC CORP.

Sole Selling Agents:

FRANK DISTRIBUTING CORP.

119 W. 57th St. • New York 19, N.Y.