

SIXTEEN TONS

By MERLE TRAVIS

RECORDED BY "TENNESSEE" ERNIE FORD ON CAPITOL RECORDS



"TENNESSEE" ERNIE FORD

TELEPHONE
JA 2-0222

*Anna
Foster*

GORDON V. THOMPSON LIMITED

32 Alcorn Ave., Toronto

By Arrangement with

A COMPLETE MUSICAL SERVICE AMERICAN MUSIC, INC.

36 JAMES ST. NORTH - HAMILTON

9109 Sunset Blvd.

Hollywood, California

SIXTEEN TONS

Moderate tempo

By MERLE TRAVIS

Piano introduction in G major, 2/4 time. It begins with a forte (*f*) dynamic and concludes with a ritardando (*rit.*) marking.

VERSE

Em

1. Some peo - ple say a man is made out of mud — A
 2. (I was) born — one morn - in' when the sun did - n't shine — I
 3. (I was) born — one morn - in', it was driz - zle - ing rain
 4. (If you) see — me com - in' bet - ter 7 step a - side A

Piano accompaniment for the first verse, corresponding to the lyrics above. It features a steady bass line and chords in the right hand.

Em

poor man's made out of mus - cle and blood —
 picked up my shov - el and I walked to the mine, I load - ed
 Fight - in' and trou - ble are my mid - dle name — I was
 lot - ta men did - n't 7 a lot - ta men died —

Piano accompaniment for the second verse, corresponding to the lyrics above.

Em

Am

Mus - cle and blood and skin and bones — A
 Six - teen Tons of an skin num - ber nine coal And the
 raised in a cane - brake by an ole ma - ma lion, Cain't no
 One fist of i - ron 7 the oth - er of steel, If the

Piano accompaniment for the third verse, corresponding to the lyrics above.



Copyright 1947 by AMERICAN MUSIC, INC., 9109 Sunset Blvd., Hollywood, Calif.
 International Copyright Secured
 All rights reserved including the right of public performance for profit.

Authorized for sale in Canada but not elsewhere.

C7 Em

mind that's weak and a back that's strong. You load
 straw - boss - said " Well - a bless my soul." You load
 high - toned - wo - man make me walk the line. You load
 right one don't - a get you, then the left one will. You load

CHORUS

Em

Six - teen Tons, what do you get? An - oth - er day old - er and deep - er in debt. Saint

Em Am Em

Pe - ter, don't you call me 'cause I can't go - I owe my soul to the com - pa - ny store -

1-2-3 Em 4 Em

2. I was
 3. I was
 4. If you

rit.

THREE GREAT DON MESSER FOLIOS!



DON MESSER'S

BARN DANCE BREAKDOWNS

A choice collection of fifteen fiddlin' tunes with piano accompaniment. Contains: Globetrotters Jig, The Mayflower Reel, Blue Mountain Hornpipe, The Prairie Waltz, The Whistling Farmer, The P.E.I. Hornpipe, etc.

Price \$1.00

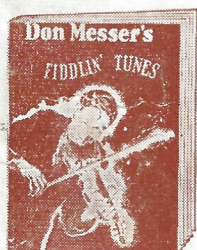
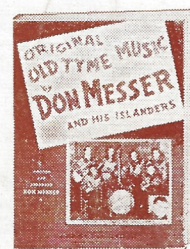
ORIGINAL OLD TYME MUSIC

by

Don Messer and His Islanders

21 fiddle tunes written and arranged by Don Messer for violin and piano. Includes: Operator's Reel, Hop Polka, Don Messer's Breakdown, etc.

Price 75c



DON MESSER'S

WAY DOWN EAST FIDDLIN' TUNES

A 32 page folio containing more than one hundred fiddlin' tunes. Includes: Break-downs, Reels, Polkas, Hornpipes, Jigs, Clogs, Waltzes, etc.

Price 85c

WES McVICAR'S

75 FAVORITE SQUARE DANCE CALLS

FOR DANCERS AND TEACHERS

Instructor's Manual and call book. Gives clear explanations of fundamental terms. Progresses from the easy first changes to the more difficult second and third changes.

Price 85c



WES McVICAR'S

75 MORE SQUARE DANCES

The dances contained in this book are not the most difficult ones but are slightly more so than those found in the first book. A few are intricate. All of them are fun!

Price 85c

ASK YOUR DEALER FOR THESE BOOKS

Published by

GORDON V. THOMPSON LIMITED

32 ALCORN AVENUE

TORONTO 7