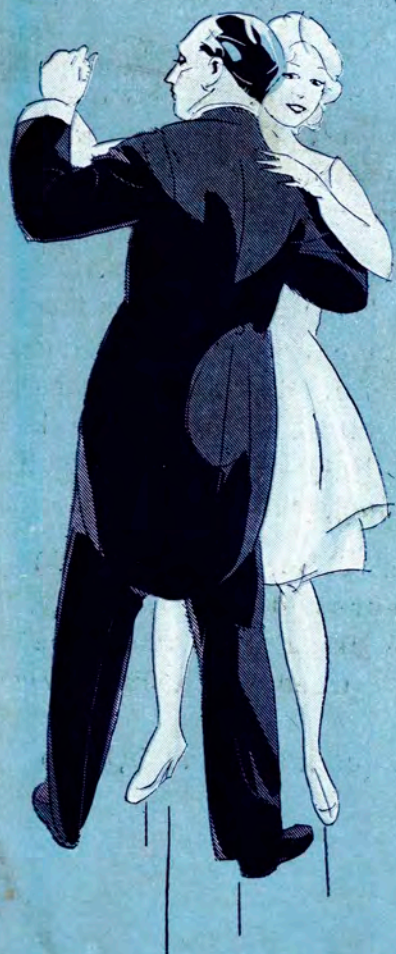


The Original
YALE BLUES

(containing a full description of
how to dance the Yale Blues)

BY
CECIL H. TAYLOR

WRITTEN BY
COLLIE KNOX
COMPOSED BY
VIVIAN ELLIS



I received the copy of the "YALE BLUES," and I consider it very good indeed and the rhythm absolutely perfect for the new Yale Dance invented by me.
Cecil H. Taylor.

Copyright by
FRANCIS, DAY & HUNTER, Ltd., London, Eng.
Published in America by
LEO. FEIST, INC.,
Feist Bldg., New York.

*Authorized for Sale And Distribution in the
Countries of North America But Not Elsewhere!*

DESCRIPTION OF "The Yale Blues"

By CECIL H. TAYLOR

A dance to Blues rhythm, invented by Cecil H. Taylor, President of the Imperial Society of Teachers of Dancing, and demonstrated in London on 24th July, 1927. The dance having been selected for public performance, was again demonstrated at the Park Lane Hotel, London, on Monday 25th July, 1927.

The following is the description as demonstrated:

Forward Step:- Gentlemen R. F. forward (S) L. F. forward (S) open chasse to right side (QQ) Close L. F. to R. F. (S) and brush through.(S)

1st Side Step:- Open chasse to side (QQ) Step on L. F. and bend knee (S) Bend right knee regaining direction for another movement.(S)

2nd Side Step:- Side Walk L. F. (S) Side Walk R. F. (S) followed by L. R. (QQ) Step on L. and bend knee (S) Bend right knee and regain line of dance.

Outside Tilt:- Step outside of partner L. F. (S) R. F. (S) Swing L. F. forward with slight rise on R. F. (Q) Pass L. F. behind right (Q) step to right with R. F. (Q) Bring L. F. to right and brush through.(S)

Reverse Cross Turn:- L. F. forward $\frac{1}{4}$ reverse turn (Q) Step back on R. F. $\frac{1}{4}$ turn (Q) draw L. F. over R. F. (S) Step back on R. F. (Q) Balance forward (Q) Balance backwards making $\frac{1}{4}$ turn (S) Bring L. F. to side of R. F. and make $\frac{1}{4}$ turn on right heel (S) step to side with L. F. (S) Step back with R. F. (Q) close L. F. to R. F. (Q) changing feet with slight spring, the R. F. taking long step forward.(S)

Tempo, 34 bars per minute. Time, common. (S) represents two beats. (Q) represents one beat. R. F. (right foot) L. F. (left foot) Walking steps should be dragged. Side movements performed with a slight sway from knees.

S denotes a slow step, Q a quick step and QQ two quick steps coming together.

The Yale Blues

Written by
COLLIE KNOX

FOX-TROT SONG
(Ukulele arr. see note below *)

Composed by
VIVIAN ELLIS

Not too fast

ff

A boy once went to Col - lege
He taught it to the mas - ters,

And stud - ied "Blues" all day; — Not quite the sort of know - ledge,
He taught it ev - 'ry where, — And ev - en wor - thy pas - tors,

For which good fa - thers pay. — They tried to stop him danc - - ing,
Remarked "Well, I de - clare!" "This dance is might - y nov - - el,

513F

6046-4

Copyright MCMXXVII by Francis, Day & Hunter, Ltd., London-England
International Copyright Secured and Reserved

Leo. Feist, Inc., New York, Sole and Exclusive Agents for North America

This Edition authorized for sale and distribution in the Countries of North America, but not elsewhere

* Tune Ukulele
or Banjulele Banjo
A D F# B
Capo on 1st Fret.

But all without a - veil, — He found a Blues en - tranc - ing, The blues he called "The Yale."
 Let's teach it far and wide, — To ev - 'ry home and hov - el, To ev - 'ry girl and bride."

CHORUS

They say the Yale — is like the walk — of an - y snail — up on a stalk; — Those are the

views — of all who do the New Yale Blues. Just close your eyes, — you'll do it

soon, — A world of sighs — is in the tune. — When daylight dies, — The stars are dancing

The Feist

SONG SHEET

CONTAINS 62 CHORUSES NEW AND OLD. JUST THE THING FOR PARTIES, BANQUETS, COMMUNITY SINGING. ASK YOUR DEALER.
 5¢ PER COPY \$3.99 PER 100.

Those Yale Blues. When Harvard knew — That syn-co-pa - tion, It sent them sim-ply

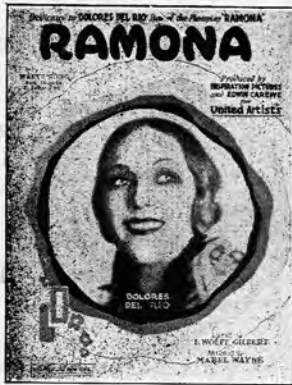
wild. Their anger grew — When ev-'ry na - tion, And ev-'ry lit - tle child, Said that the

optional

Yale — had put the rest, — Beyond the *pale — it is the best. — Put on your

shoes, — Suppose you try those New Yale Blues. They say the Blues. —

"You Can't Go Wrong With These 'Feist' Songs"



Dedicated to Dolores Del Rio

"Ramona"

By L. Wolfe Gilbert and Mabel Wayne

CHORUS

p-f

Ra - mon - a, I hear the mis - sion bells a - bove, Ra - mon - a, they're ring - ing out our song of love,
 press you, ca - res - sion, and bless the day you taught me to care, To al - ways, re - mem - ber the

© Leo Feist, Inc.

A Fox-Trot Lullaby

"Indian Cradle Song"

By Gus Kahn and Mabel Wayne

CHORUS

Sleep and rest, sleep and rest, From drow - sy - land sand - man's a com - ing,
 Thru leaf - y trees breez - es are hum - ming, Hum - ming, In - di - an cra - dle

© Leo Feist, Inc.



Theme Song of the Gilbert-Garbo Picture "Love"

"That Melody of Love"

By Walter Donaldson and Howard Dietz



CHORUS

Heav - en - ly night right un - der the moon, Things were so bright the world was in tune, Night - birds from their nest a -
 -bove, Sang that mel - o - dy of love, There was a thrill and now it is gone, We kissed un - til the

© Leo Feist, Inc.

OTHER "FEIST" SONGS YOU WILL ENJOY

- | | |
|---|-----------------------|
| "RIO RITA" (from Ziegfeld's "Rio Rita") (40c) | "KISS AND MAKE UP" |
| "THERE MUST BE A SILVER LINING" | "BABY YOUR MOTHER" |
| "CHANGES" | "MY BLUE HEAVEN" |
| "MY OHIO HOME" | "A SHADY TREE" |
| "WHERE IS MY MEYER?" (from <i>Chauve Souris</i>) (40c) | "YALE BLUES" |
| "HEAD OVER HEELS IN LOVE" | "JUST ONCE AGAIN" |
| "WHAT ARE YOU WAITING FOR, MARY?" | "IF I CAN'T HAVE YOU" |

Get them for your Piano, Talking Machine and Player Piano

"Feist Songs" are on sale wherever music is sold or we will supply you direct.
 Popular Songs 35c a copy (any 3 for \$1.00). Operatic Songs 40c a copy.

LEO. FEIST, Ltd. Leo. Feist, Inc., Feist Bldg., 231 W. 40th St., New York
 193 YONGE STREET

TORONTO

"You Can't Go Wrong With Any 'Feist' Song"