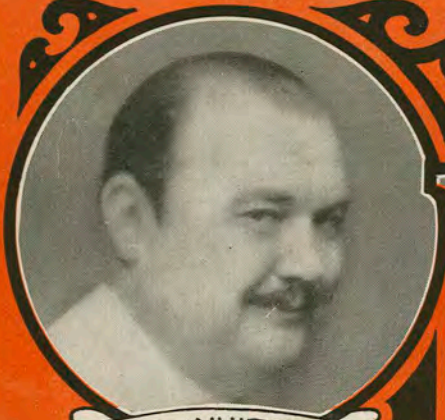


Jean.

THAT LITTLE SOMETHING

CHARLES DILLINGHAM'S PRODUCTION

LUCKY



PAUL WHITEMAN



WALTER CATLETT



MARY EATON



JOSEPH SANTLEY



RICHARD (SKEET) GALLAGHER



IVY SAWYER



RUBY KEELER

By
OTTO HARBACH
BERT KALMAR & HARRY RUBY
and
JEROME KERN

T. B. HARMS
COMPANY
NEW YORK

STAGED BY
HASSARD SHORT
DANCES ARRANGED BY
DAVID BENNETT
RASCH DANCES
ARRANGED BY
ALBERTINA RASCH

Dancing The Devil Away
Cingalese Girls
That Little Something
When The Bo-Tree Blossoms Again
The Same Old Moon
Selection

SUNNY

(Tom and Boys)

Words by
OTTO HARBACH and
OSCAR HAMMERSTEIN IInd

Music by
JEROME KERN

Burthen *a tempo.*

p-f

Nev - er comb - your hair Sun - ny!

p-f *a tempo.*

Detailed description: This system contains the first line of the song. It features a vocal melody in the upper staff and a piano accompaniment in the lower two staves. The key signature has two flats (B-flat and E-flat), and the time signature is 4/4. The tempo is marked 'a tempo'. The lyrics are 'Nev - er comb - your hair Sun - ny!'. The piano part includes dynamic markings 'p-f' and 'a tempo.'.

Leave the breez - es there Sun - ny! Let your stock -

Detailed description: This system contains the second line of the song. It continues the vocal melody and piano accompaniment from the first system. The lyrics are 'Leave the breez - es there Sun - ny! Let your stock -'. The piano part continues with similar harmonic support.

- ing fall down, For shock - ing the town is all -

Detailed description: This system contains the third line of the song. It concludes the vocal melody and piano accompaniment for this section. The lyrics are '- ing fall down, For shock - ing the town is all -'. The piano part provides a final harmonic resolution.

Copyright MCMXXV by T. B. Harms Co., N. Y.
International Copyright Secured
ALL RIGHTS RESERVED Including public performance for profit

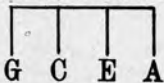
"Lucky"

That Little Something

The right to make arrangements of or otherwise reproduce this composition is expressly reserved

(Lucky and Jack)

Tune Ukulele



Words by
BERT KALMAR
and **HARRY RUBY**

Music by
JEROME KERN

Moderato

Piano

Piano introduction musical notation. The right hand plays chords in a descending sequence, while the left hand plays a simple bass line. The tempo is marked 'Moderato' and the dynamics are 'p'.

Ukulele chord diagrams for the first system, labeled 'JACK'. The chords are G, C, E, and A.

pp JACK

May - be you'd think me bold or rude, To al - lude to what's on my
Lucky: Just like you love a feel - ing too, That I nev - er knew of, be -

Piano accompaniment for the first system, labeled 'JACK'. The right hand plays chords in a descending sequence, while the left hand plays a simple bass line. The dynamics are 'pp'.

Ukulele chord diagrams for the second system, labeled 'LUCKY'. The chords are G, C, E, and A.

LUCKY

mind. That de - pends you will find,
 fore. *Jack:* That just ev - ens the score;

Piano accompaniment for the second system, labeled 'LUCKY'. The right hand plays chords in a descending sequence, while the left hand plays a simple bass line. The dynamics are 'pp'.

How your mind is in - clined. There's a thing that's been
 Won't you tell us some more? *pp* JACK *Lucky: I confess it is*

blos-som-ing Like a bud in spring since we met; I'd let you speak your
 hap - pi-ness, But I'm more or less in a daze. *LUCKY* *Jack: May I answer the*

rall. mind out. *Jack: Here's what you* — can't help me find out:
quest-ion? Lucky: You might of - fer a sug - gest - ion:

Burthen *Quasi allegretto ma, espress.*
p-mf What is that some - - - thing, that lit - tle some -

— thing, Bump - ing and thump - ing

down in my heart?— I can't ex - press — it,

nev - er - the - less — it must have a name, —

May - be you've felt — the same; When you're near

it goes pit - a - pat, Real - ly dear,

uke silent
I don't know where — I'm at; What can such bliss — be?

Tell me can this — be That lit - tle some - thing, called

Love? Love?

dim.

WHO?

Words by
OTTO HARBACH and
OSCAR HAMMERSTEIN II

Music by
JEROME KERN

Burthen

Who stole my heart—

con grazia

p
semplice

Detailed description: This system contains the first two lines of music. The top staff is a vocal line in treble clef, starting with a key signature of two sharps (D major) and a 2/4 time signature. The lyrics 'Who stole my heart—' are written below the notes. The piano accompaniment consists of two staves (treble and bass clefs) with chords and moving lines. Performance markings include a piano (*p*) dynamic, a hairpin crescendo (*con grazia*), and a tempo marking (*semplice*).

a - way? Who makes me dream—

Detailed description: This system contains the third and fourth lines of music. The vocal line continues with the lyrics 'a - way? Who makes me dream—'. The piano accompaniment continues with similar harmonic support. The key signature remains two sharps and the time signature is 2/4.

— all day? Dreams, I know, can

Detailed description: This system contains the fifth and sixth lines of music. The vocal line concludes with the lyrics '— all day? Dreams, I know, can'. The piano accompaniment continues. The key signature remains two sharps and the time signature is 2/4.

Copyright MCMXXV by T. B. Harms Co., N.Y.
International Copyright Secured
ALL RIGHTS RESERVED Including public performance for profit

"Criss-Cross"

You Will - Won't You?

The right to make arrangements
of or otherwise reproduce this
composition is expressly reserved

Words by
ANNE CALDWELL
and OTTO HARBACH

Music by
JEROME KERN

Burthen

p-f
You, will now, won't you? You will, won't you?

You want to, don't you? You do, don't you? **ED**

ven - tu - al - ly, con - tent you will be If
cresc. *poco* *a poco* *mf*

Copyright MCMXXVI by T.B.Harms Co., N.Y.
International Copyright Secured
ALL RIGHTS RESERVED Including public performance for profit