

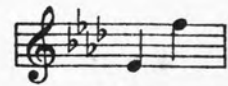
Wee Fiddle Moon

Words by
EDITH MAC DONALD GRAHAM

Music by
LEON ABBOTT HOFFMEISTER



LOW



HIGH

PRICE T-50 CENTS
EXCEPT CANADA AND FOREIGN

R.L.HUNTZINGER, Inc.
NEW YORK

PRINTED IN U.S.A.

Wee Fiddle Moon

Words *by
Edith Mac Donald Graham

Music by
Leon Abbott Hoffmeister

With swinging motion (c. ♩ = 76)

Voice

Piano

p

mf

I'll play a tune on a wee fiddle moon, —

mf

Creep-in' up the eve-nin' sky; — A round lit-tle tune that'll

* Reprinted by permission of *Good Housekeeping*

Copyright, 1929, by R. L. Huntzinger, Inc.
International Copyright Secured

end too soon, Float-in' up the eve - nin' sky. Then

dim. *ten.*

sway you_ low and sway you_ high_ A - creep-in' up the eve-nin' sky.

poco rit. *a tempo*

poco rit. *a tempo*

I'll find a bow where lush rush - es grow_ Down by the riv - er's

mf *ten.*

sing - ing, A lithe lit - tle bow that'll sweep to and fro_ Where

colla voce

this-tle downs are cling-ing. Oh, sweep you_ high, an'

ten. *ten.*

sweep you low, Creep-in' up the eve-nin' sky.

rit. *a tempo*

ben ritmato

I'll pick a note from a

This system contains the first three measures of the piece. The vocal line begins with a whole rest in the first measure, followed by a half note G4 in the second measure, and a quarter note G4 in the third measure. The piano accompaniment features a bass line with a whole note chord (F4, C5) in the first measure, and a treble line with a half note chord (F4, C5) in the first measure, followed by a half note chord (F4, C5) in the second measure, and a half note chord (F4, C5) in the third measure.

mock - in' birds' throat. Close where the as - pens

pp delicato

This system contains measures 4 through 6. The vocal line continues with a half note G4 in the fourth measure, a quarter note G4 in the fifth measure, and a quarter note G4 in the sixth measure. The piano accompaniment features a treble line with a half note chord (F4, C5) in the fourth measure, followed by a half note chord (F4, C5) in the fifth measure, and a half note chord (F4, C5) in the sixth measure.

shiv - er, Some sweet lit - tle note that'll

dim.

This system contains measures 7 through 9. The vocal line continues with a half note G4 in the seventh measure, a quarter note G4 in the eighth measure, and a quarter note G4 in the ninth measure. The piano accompaniment features a treble line with a half note chord (F4, C5) in the seventh measure, followed by a half note chord (F4, C5) in the eighth measure, and a half note chord (F4, C5) in the ninth measure.

rit. flut-ter and float_ *a tempo* Up where the moon-beams quiv-er. *ten.* Oh, *ten.*

rit. *a piacere* *l.h.*

rit. sing you ev-'ry note,— *a tempo* ev-'ry lit-tle note, *p.* Creep-in' up the eve-nin'

rit. *a tempo*

sky.

pp 8

To Tito Schipa

Phyllis

Text by
PAUL LAWRENCE DUNBAR

Music by
RAYMOND EARLE MITCHELL

Moderato

Voice

Piano

mf *rall.*

p grazioso

Phyl - lis, — ah, — Phyl - lis, my life is a gray day, Few are my —

p a tempo

years, but my griefs are — not few, Ev - er to youth should each