

FOREVER IS A LONG, LONG TIME

I

Just Goodbye forever,  
And each tie you sever,  
Two words are spoken, One heart is broken;  
But ere you go just remember dear.

REFRAIN

Forever means when summer brings the roses,  
They'll waken mem'ries in your heart,  
Forever means the songs we love, together,  
Will lose their sweetness when we part.  
Forever dear, means that we near  
The twilight of a day sublime;  
When you say "Goodbye forever" just remember  
That Forever is a long, long time.

II

From afar I'll love you,  
Ev'ry star above you,  
Dreams will awaken, Tho' I'm forsaken,  
Back to my own I will come again.

*Darl MacBoyle*



# FOREVER IS A LONG LONG TIME

LYRIC BY  
DARL MacBOYLE

MUSIC BY  
ALBERT VON TILZER

PRICE · SIXTY · CENTS



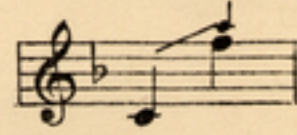
HIGH VOICE IN G  
\* MEDIUM VOICE IN F

LOWER MEDIUM IN E♭  
LOW VOICE IN D

**ARTMUSIC, INC.**  
340 W. 45th ST. NEW YORK

# "Forever" Is A Long, Long Time

Words by  
DARL Mac BOYLE



Music by  
ALBERT VON TILZER

Andante Moderato

*mf* *p*

*con espress.*

Just "Good - bye" for -  
From a - far I'll

*rit.* *dim.* *R.H.* *L.H.* *pp* *p* *con espress.*

*ped.* \*

ev - er, And each tie you sev - er,  
love you, Ev - 'ry star a - bove you,

Two words are spo - ken, One heart is bro - ken;  
 Dreams will a - wak - en, Tho' I'm for - sak - en;

But 'ere you go, just re - mem - ber dear.  
 Back to my own I will come a - gain.

*rit.*

*dim.* *rit.* *rit.*

REFRAIN

"For - ev - er" means when sum-mer brings the ros - es, They'll

*mp a tempo*

wak - en mem'ries in your heart; "For - ev - er" means the songs we love, to -

Forever is a long long time Medium

geth - er, \_\_\_\_\_ Will lose their sweet-ness when we part. \_\_\_\_\_ "For

*resc.*

ev - er" dear, means that we near The twi - light of a day sub -

lime, \_\_\_\_\_ When you say "Good-bye for-ev-er," just re - mem - ber \_\_\_\_\_ That "For-

*rit.* *ff* *rit.*

ev-er" is a long, long time. \_\_\_\_\_

*colla voce* *ff* *accel.* *rit.* *R.H.* *L.H.*