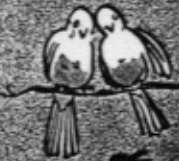
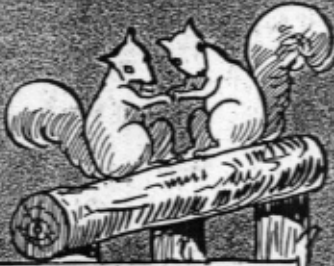


# AIN'T THAT A GRAND *and* GLORIOUS FEELING

*With  
UKULELE  
Arrangement*



WORDS BY  
**JACK YELLEN**  
MUSIC BY  
**MILTON AGER**



*Featured By*  
**YATES and LAWLEY**



**AGER, YELLEN & BORNSTEIN INC.**

MUSIC PUBLISHERS

745-7TH. AVE.



NEW YORK

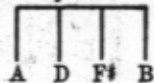
# Aint That A Grand And Glorious Feeling?

Words by  
JACK YELLEN

Tune Ukulele  
or Banjulele Banjo

Music by  
MILTON AGER

All<sup>o</sup> Mod<sup>to</sup>



The first two systems of piano accompaniment. The first system consists of two staves (treble and bass clef) with a key signature of one sharp (F#) and a 2/4 time signature. The second system continues the accompaniment with similar notation.

Ukulele Arr by MAY SINGHI BREEN



The first system of the vocal line and piano accompaniment. The vocal line is on a single staff with lyrics: "Is there a - ny - one / Aint it sad - when you're". The piano accompaniment is on two staves. A "Vamp" section is indicated above the piano part, and a "p" (piano) dynamic marking is present.

The second system of the vocal line and piano accompaniment. The vocal line has lyrics: "pre - sent - / lone - ly? - Who was e - ver in love? / Ev - 'ry - thing - is so blue". Above the vocal line are six ukulele chord diagrams. The piano accompaniment continues on two staves.



If so, you know how I'm feel - ing right  
 Those bird - ies don't sing, Life don't mean a

*Optional*

now Ev - 'ry - thing is so plea - sant  
 thing Then a - long comes the on - ly

Sun is shin - ing a - bove If you're in love, gee  
 Lit - tle girl - ie for you It cer - tain - ly is

whiz! You know just how it is  
 strange How ev - 'ry - thing does change

Grand And Glorious Feeling

Chorus

When there's some-bo-dy who you can cud-dle up to,

Ain't that a grand and glo-ri-ous feel - - - ing?

When you're hug-ging her there In that co-zy old chair,

Ain't that a grand and glo-ri-ous feel - - - ing?

*mel*

*Key #*

Ever - ry lit - tle kiss - Does you so much good -

You're so full of bliss, - You just feel like knock-ing wood! And

when you "na-cher-ly" guess That she's goin' to say "yes"

Ain't that a grand and glo - ri - ous feel - - - ing? ing?

Grand And Glorious Feeling