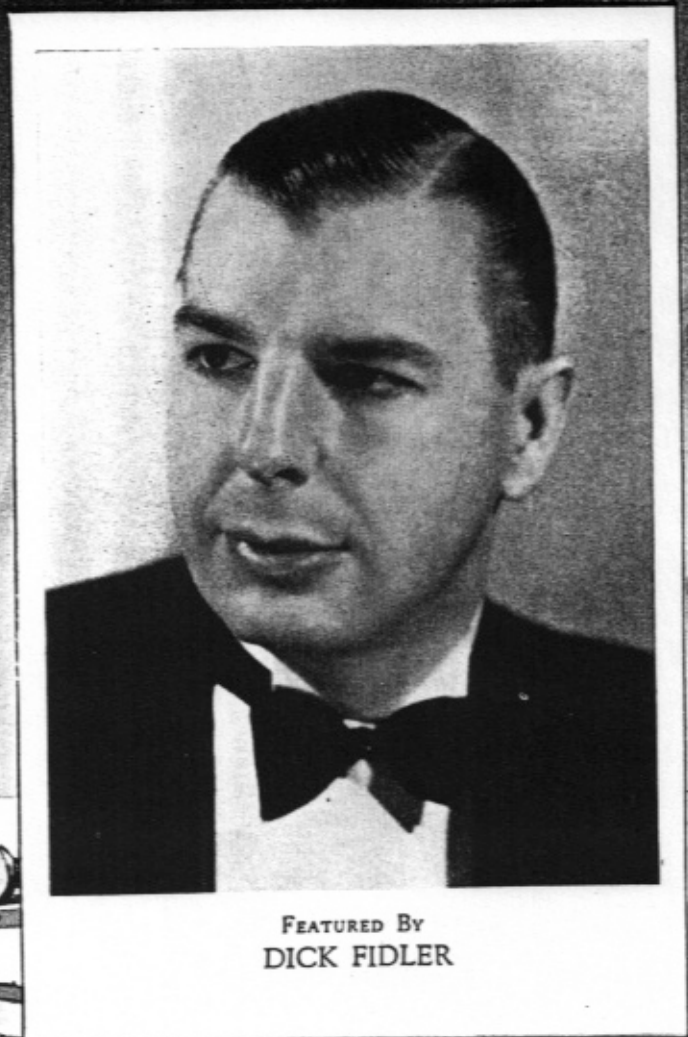
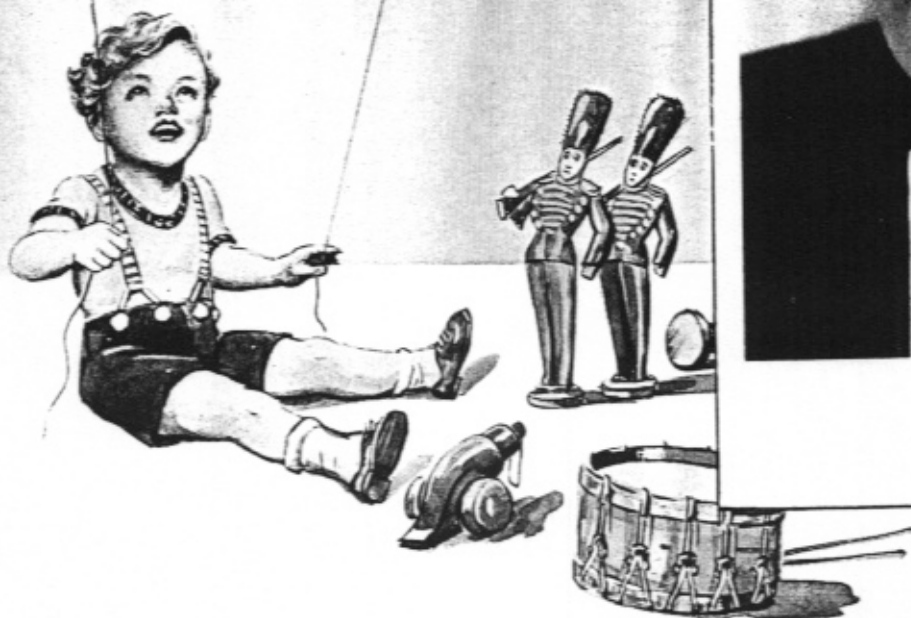


SLEEPY TIME IN TOPSY-TURVY TOWN

By
CHAS. NEWMAN
MURRAY MENCHER
and MILTON AGER



FEATURED BY
DICK FIDLER

With Additional Chorus
—for PIANO ACCORDION

AGER, YELLEN & BORNSTEIN INC.
MUSIC PUBLISHERS
745 SEVENTH AVE.  NEW YORK

SLEEPY TIME IN TOPSY-TURVY TOWN ³

*) Diagrams for Guitar

Letters above Diagrams for Ukulele and Banjo

By { CHARLES NEWMAN,
MURRAY MENCHER &
MILTON AGER

Moderato

The piano introduction consists of two staves. The right hand starts with a series of chords and eighth notes, while the left hand provides a steady bass line. A dynamic marking of *f* (forte) is present at the beginning, and a *poco rit.* (ritardando) marking is placed over the final measures.

VOICE ^{*) F} ^{Bb} ^{C7} ^F ^{Bb} ^{C7}

Tir - ed lit - tle lad, what a day you've had!
Ev - 'ry - one but you knows the day is through;

p a tempo

The piano accompaniment for the first vocal line features a melody in the right hand and a supporting bass line in the left hand. The tempo is marked *a tempo* and the dynamics are *p* (piano).

^F ^{Dmi} ^{Gmi} ^{C7} ^{Eb7} ^{Ab} ^{Db} ^{Eb7}

Things are top - sy - tur - vy in your room. You've been up since dawn;
All your toys have fall - en in a heap. In their sleep - y way

The piano accompaniment continues with the same melodic and harmonic structure as the first line, with the right hand playing the vocal melody and the left hand providing harmonic support.

^{Ab} ^{Db} ^C ^{E mi} ^{G7} ^{Bb} ^{Bb mi} ^{C7}

get your night - ie on And hop up - on the sand - man's broom. —
they all seem to say, — "How a - bout a lit - tle sleep?" —

The piano accompaniment concludes the piece with the final vocal line, maintaining the *p* (piano) dynamic and *a tempo* feel.

Copyright 1935 by AGER, YELLEN & BORNSTEIN, Inc., 745 Seventh Ave., N.Y.C.

All rights, including right of public performance throughout the world, are reserved.

GERMANY: Francis, Day & Hunter, G.M.B.H., Berlin

FRANCE: Publications, Francis Day, Paris.

International Copyright Secured.

4 CHORUS

F Bb F C7 F Bb

Your toys are top-sy-tur-vy, they're scat-tered ev-ry way; It's time for toys and lit-tle boys to

p-f

F Ami D7 G mi Bb mi F D mi

call it all a day. You've had a lot of fun, come on there, lit-tle one, It's

G mi C7 F C7 F Bb

SLEEP-Y TIME IN TOP-SY-TUR-VY TOWN. Your drum is bent and bat-tered, you've

F C7 F Bb F Ami D7

tossed it on the floor; You've run your lit-tle trains un-til they can't run an-y-more. It's

G mi Bb mi F D mi G mi C7

time you run to bed, Come on there, sleep-y head, It's SLEEP-Y TIME IN TOP-SY-TUR-VY

TOWN. — You've count-ed all your paint-ed wood-en sol-diers, It's time that you were bu-sy count-ing

marcato

sheep. — So come and climb up - on your dad-dy's shoul-ders And he'll march you right off to

ten. ten.

sleep. — You're just a lit - tle row - dy, there's mis - chief in your face, But

(feelingly)

Dad and Moth-er would-n't take an an-gel in your place. Come on there, lit-tle clown, Let's

turn the cov-ers down, It's SLEEP-Y TIME IN TOP-SY-TUR-VY TOWN. Your TOWN.

1. 2.

Piano Accordion

By CHARLES NEWMAN,
MURRAY MENCHER &
MILTON AGER

R.H. F B \flat F C7 F B \flat F A mi D7

L.H.

R.H. G mi B \flat mi F D mi G mi C7 F C7 F B \flat

L.H.

R.H. F C7 F B \flat F A mi D7 G mi B \flat mi

L.H.

R.H. F D mi G mi C7 B \flat B \flat mi F C mi F7 B \flat

L.H.

R.H. C7 F7 B \flat E \flat 7 D7 G mi D7 G mi D mi G7 ten.

L.H.

R.H. G mi C7 F B \flat F C7 F B \flat F A mi D7

L.H.

R.H. G mi B \flat mi F D mi G mi C7 F G7 C7 F

L.H.

ACCORDION CHORD MARKINGS: ① Major Chords, ② Minor, ③ Dominant Seventh, ④ Diminished.
 (R) means put on octave register, (x) remove octave register, Letters above melody, indicate chord symbols for simple accompaniment.