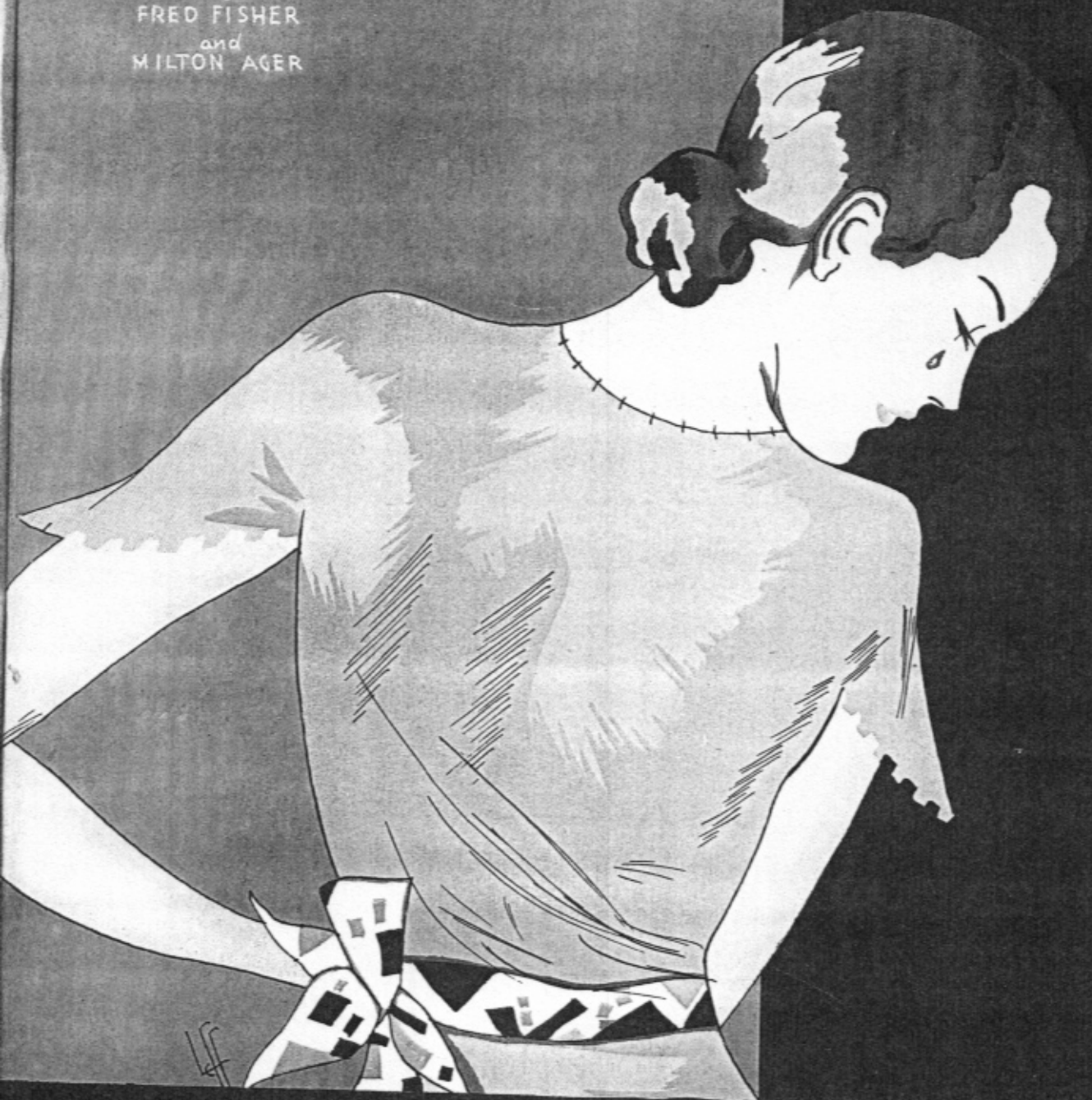


HOW CAN YOU CRY WITH THOSE BEAUTIFUL EYES

by
FRED FISHER
and
MILTON AGER



AGER, YELLEN & BORNSTEIN INC.

MUSIC PUBLISHERS

745-7TH. AVE

AYB

NEW YORK

MADE IN U.S.A.

HOW CAN YOU CRY WITH THOSE BEAUTIFUL EYES?

(Slow Fox-Trot)

Tune Ukulele

F B \flat D G

By FRED FISHER & MILTON AGER

*Also symbols for Guitar and Tenor Banjo

Moderato

Piano introduction in 4/4 time, marked Moderato. The music is in B-flat major (two flats). The right hand features a rhythmic pattern of eighth and sixteenth notes, while the left hand provides a steady accompaniment of quarter notes.

Uke Arr. by Arnold New

Ukulele and voice introduction. The ukulele part is in the key of B-flat major. The voice part begins with the lyrics "What a What's the". A guitar/banjo chord diagram for Bb7 is shown above the voice line.

Vocal and piano accompaniment for the first verse. The piano part is marked *p*. The lyrics are: "pit - y! What a shame! Such a pret - ty girl as you in tears? What's the mat - ter, Lit - tle girl? Has your great big love af - fair gone wrong? With your". Chord diagrams for Eb, dim, Bb7, dim, Eb, dim, Ab, and Bb7 are provided above the vocal line.

Vocal and piano accompaniment for the second verse. The piano part continues with the accompaniment. The lyrics are: "rea - son? Who's to blame? Won't you let me try to calm your fears? dim - ple And your curl You don't have to be a - lone for long." Chord diagrams for Eb, Eb7, Gmi, D7, and G are provided above the vocal line.

*Symbols for Guitar and Tenor Banjo

Copyright 1932 by AGER, YELLEN & BORNSTEIN, Inc., 745 Seventh Ave. N. Y. C.
All rights, including right of public performance throughout the world, are reserved
International Copyright Secured

C7 F7 Bb C mi F7 Bb7

Love-ly lit - tle girls should be glad; Beau-ty was-n't made to be sad.
Smile and show your sweet lov - li - ness; Beau-ty should-n't be in dis - tress.

(a little slower)

CHORUS Eb (Broadly)

How can you cry with those beau-ti - ful eyes, Beau-ti - ful eyes

p-f legato

G aug F mi C7 F mi Bb7

— of blue, dear? Tears have no place On

Eb Eb7 C7 F mi Ab

your pret - ty face; Smiles are more be - com - ing to you,

Bb aug Eb

dear. Don't hide the light of those beau-ti-ful eyes!

G aug F mi C7 F mi

Come, let that light shine thru', dear. Love will come a -

D7 Eb C aug F7 Bb

gain, Like the sun thru the rain If you smile with those beau - ti - ful

1. Eb B7 F7 Db7 Bb7 2. Eb

eyes! eyes!

WARNING! ANY COPYING OF THE WORDS OR MUSIC OF THIS SONG, OR ANY PORTION THEREOF, MAKES THE INFRINGER LIABLE TO CRIMINAL PROSECUTION UNDER THE U.S. COPYRIGHT LAW....