

ANNABELLE

M6982
1448

WORDS BY
LEW BROWN
MUSIC BY
RAY HENDERSON
Writers of
"GEORGETTE"



TED LEWIS

Music by *Shapiro, Bernstein & Co.*
MUSIC PUBLISHERS
COR. BROADWAY & 47th STREET
New York
Reg. U.S. Pat. Off.

MADE IN
U. S. A.

Wolfe

Shapiro, Bernstein & Co.

Try this over on your Piano.

Stay Home, Little Girl, Stay Home

By LEW BROWN and
JAMES F HANLEY

CHORUS

Stay home lit-tle girl, stay home _____ Don't roam, lit-tle girl, don't
roam, _____ The one who would lure you from those you love so, Will
take you and fool you and then let you go, The girl who stays
home is a fool they may say, But she's just the kind that they

p-f

Copyright MCMXXIII by Shapiro, Bernstein & Co. Inc. Cor. Broadway & 47th Street, New York

International Copyright Secured

All Rights Reserved

Propiedad Asegurada Para La Republica Mexicana MCMXXIII Todos Los Derechos Reservados

Complete Copies may be had where you bought this

Words by
LEW BROWN

Annabelle

By the writers of "Georgette"

Music by
RAY HENDERSON

Moderato

Piano introduction in G major, 4/4 time, Moderato. The piece begins with a treble clef staff containing a melodic line starting on G4, moving up stepwise to D5. The bass clef staff provides a rhythmic accompaniment with eighth notes. Dynamics include a forte (f) marking at the beginning and a fortissimo (ff) marking towards the end.

Vamp

Vamp piano accompaniment consisting of a continuous eighth-note rhythmic pattern in the bass clef and a series of chords in the treble clef. The chords are primarily triads and dyads, mostly in the right hand. Dynamics include a piano (p) marking.

Pret-ty lit-tle An-na-belle Liked a lot of
Pret-ty lit-tle An-na-belle Tried to make him

Musical notation for the second line of lyrics. The vocal line is in the treble clef, and the piano accompaniment is in the bass clef. Dynamics include a piano (p) marking.

beaus, And her sweet-ie John-ny Brown Want-ed her to set-tle down,
blue, Sent him to her fam-i-ly, Said "Give them your ped-i-gree"

Musical notation for the third line of lyrics. The vocal line is in the treble clef, and the piano accompaniment is in the bass clef. Dynamics include a piano (p) marking.

How he coaxed sweet An-na-belle Good-ness on-ly knows,
He came back to An-na-belle, Said "I'm glad it's thru"

Copyright MCMXXIII by Shapiro, Bernstein & Co. Inc., Cor. Broadway & 47th Street, New York
International Copyright Secured All Rights Reserved
Depositado conforme con las leyes de los Países de Sud y Central America y Mexico
Depositado en el año MCMXXIII por Shapiro, Bernstein & Co. Inc., Nueva York, E. U. de A.

ALL RIGHTS RESERVED
Including Public Performance for Profit

She'd say "yes," then she'd say "no," Each time he'd propose: _____
 They're all sat - is - fied with me, Now it's up to you: _____

CHORUS

Oh! An - na - belle, _____ Oh! An - na - belle, _____ You've made a wild man out of

me, _____ 'Cause ev-'ry day _____ in ev-'ry way _____ You get me jeal-ous as can be,

There's just one thing wor-ries me, dear, — You've got six en -

-gage-ment rings, I hear, I've got a Ford, — I've got a flat, — There's on-ly

l.h.
fz fz

one more payment due, — I've got a dog, — I've got a cat, — And honey, all I need is

you I won't e - ven fret or fuss If your moth-er lives with us Oh! An-na-

l.h.

-belle, — Oh! An-na - belle, — When will the bells dingdong for me? Oh! An-na- me?

1. 2.
fz fz

TRY THESE OVER

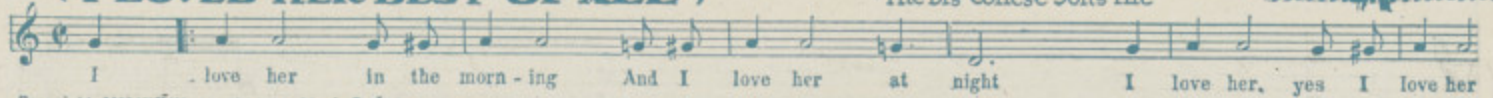
MUSIC DEALER
YOUR

CARRIES THESE SONG HITS
for YOUR PIANO, PHONOGRAPH
or YOUR PLAYER PIANO.

LAST NIGHT ON THE BACK PORCH

(I LOVED HER BEST OF ALL)

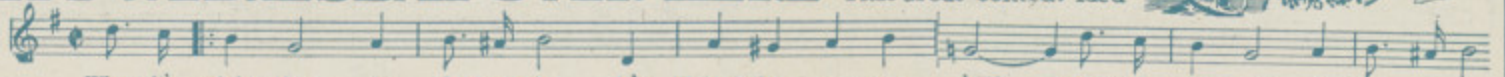
The Big College Song Hit



Copyright MCMXXIII by Skidmore Music Co. Inc.

WHEN IT'S NIGHT-TIME IN ITALY IT'S WEDNESDAY OVER HERE

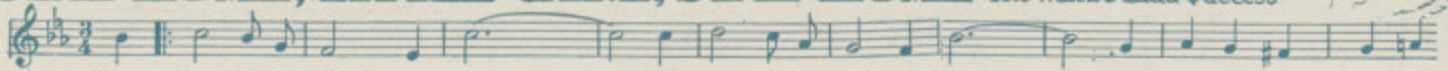
That Great Comedy Idea



Copyright MCMXXIII by Shapiro, Bernstein & Co. Inc.

STAY HOME, LITTLE GIRL, STAY HOME

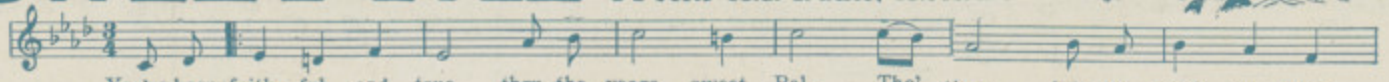
The Waltz Ballad Success



Copyright MCMXXIII by Shapiro, Bernstein & Co. Inc.

SWEET PAL

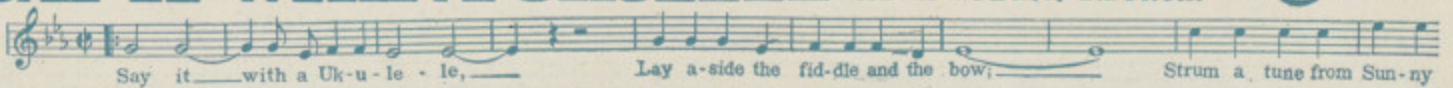
A Song That Touches The Heart



Copyright MCMXXIII by Shapiro, Bernstein & Co. Inc.

SAY IT WITH A UKULELE

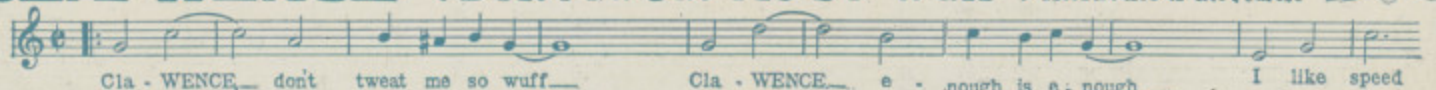
The Hit of "Artists and Models"



Copyright assigned MCMXXIII to Skidmore Music Co. Inc.

CLA-WENCE (Don't Tweak Me So Wuff)

The Novelty of the Season

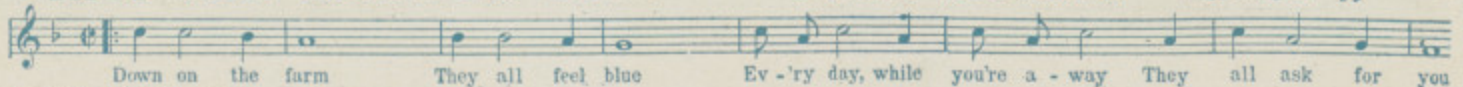


Copyright MCMXXIII by Shapiro, Bernstein & Co. Inc.

DOWN ON THE FARM

(THEY ALL ASK FOR YOU)

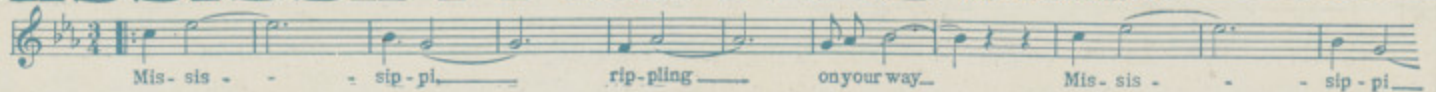
A Country-wide Sensation



Copyright MCMXXIII by Skidmore Music Co. Inc.

MISSISSIPPI RIPPLES

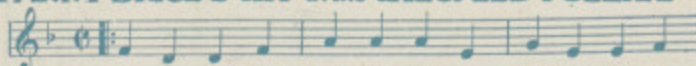
MARY EARL'S ANNUAL
WALTZ CREATION.



Copyright MCMXXII by Shapiro, Bernstein & Co. Inc.

LONESOME CINDERELLA

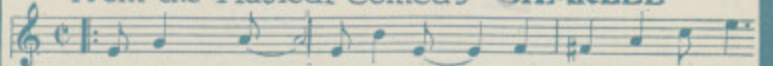
FANNY BRICE'S HIT in the ZIEGFELD FOLLIES



Copyright MCMXXIII by Shapiro, Bernstein & Co. Inc.

HEART BEATS

from the Musical Comedy "SHARLEE"



Copyright MCMXXIII by Shapiro, Bernstein & Co. Inc.

THE **GEM** America's Standard **DANCE FOLIO**
for Piano Solo only **1924** JUST PUBLISHED
Price 50¢ Postpaid.