

March 6 - 1919

Sung by Mr. JOHN McCORMACK

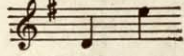
At All His Engagements

Nº 1 in F



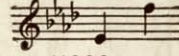
116007

Nº 2 in G



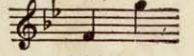
116005

Nº 3 in Ab



116004

Nº 4 in Bb



116003

Dear Old Pal of Mine

Words by

HAROLD ROBÈ

Music by

GITZ RICE, LIEUT.

First Canadian Contingent

Price 40 cents, net—No discount

G. RICORDI & CO., INC.

14 EAST 43RD STREET

NEW YORK

And at

LONDON, PARIS,

ROME, PALERMO, NAPLES,

BUENOS AYRES AND MILAN



*Yours truly
Gitz Rice,
Lieut.
1st Canadians.*

G. Ricordi & Co.

One night at Ypres, while doing sentry duty in the front lines, the composer, then a private, was inspired by the thought, "Oh, how I miss you, dear old pal of mine," to write this song.

Dear old Pal of Mine

3

Words by
HAROLD ROBE

Music by
LIEUT. GITZ RICE
First Canadian Contingent

Andante con espressione

L. II.

Piano

The piano introduction consists of two staves. The right hand starts with a melody in G major, marked *mf*, and the left hand provides a harmonic accompaniment. The tempo is *Andante con espressione*. The piece concludes with a *p* (piano) dynamic marking.

All my life is emp-ty, Since I went a-way, Skies don't seem to be so

The vocal line begins with a half note rest, followed by the lyrics. The piano accompaniment features a steady eighth-note pattern in the right hand and a more active bass line in the left hand.

clear, May some an-gel sen-try, Guard you while I stray, And

L. H. B. H.

The vocal line continues with the lyrics. The piano accompaniment maintains its rhythmic accompaniment, with some chordal changes in the right hand.

fate be kind to join us some sweet day.

rall.

The vocal line concludes with the lyrics. The piano accompaniment ends with a *rall.* (ritardando) marking, leading to a final chord.

Refrain

Oh, How I want you, Dear old pal of mine,

a tempo mp

Each night and day I pray you're al - ways mine.

Sweet-heart may God bless you, An-gel hands ca - ress you,

While sweet dreams rest you, Dear old pal of mine.

poco a poco rit.

mf

L.H.

p

Detailed description: This system shows the piano introduction. It consists of a treble clef staff with a key signature of one sharp (F#) and a bass clef staff. The music begins with a mezzo-forte (mf) dynamic. The right hand (RH) plays chords and moving lines, while the left hand (LH) provides a bass line. The dynamic shifts to piano (p) towards the end of the system, where the left hand has a specific fingering indicated as 'L.H.' with the number '2'.

Dear - ie I'm so lone-ly, How I miss your smile, And your ten-der lov - ing

Detailed description: This system contains the first line of the song. The vocal line is in the treble clef, and the piano accompaniment is in the bass clef. The lyrics are: "Dear - ie I'm so lone-ly, How I miss your smile, And your ten-der lov - ing". The music is in a major key with one sharp (F#).

way, I just want you on - ly, Want you all the while May

L.H. R.H.

Detailed description: This system contains the second line of the song. The vocal line is in the treble clef, and the piano accompaniment is in the bass clef. The lyrics are: "way, I just want you on - ly, Want you all the while May". The piano accompaniment features a section labeled "L.H. R.H." with a specific fingering for the right hand.

God de - cree I have you back some day.

rall.

Detailed description: This system contains the final line of the song. The vocal line is in the treble clef, and the piano accompaniment is in the bass clef. The lyrics are: "God de - cree I have you back some day.". The piano accompaniment ends with a "rall." (rallentando) marking.

Refrain

Oh, How I want you, Dear old pal of Mine,

a tempo mp

Each night and day I pray you're al - ways mine.

Sweet-heart may God bless you, An-gel hands ca - ress you,

While sweet dreams rest you, Dear old pal of mine.

poco a poco rit.